

GECITECH

HOSES & FITTINGS



Food



Pharmaceuticals



Cosmetics



Biotechnology



Chemicals

Innovative
flexibility

SILICONE HOSES

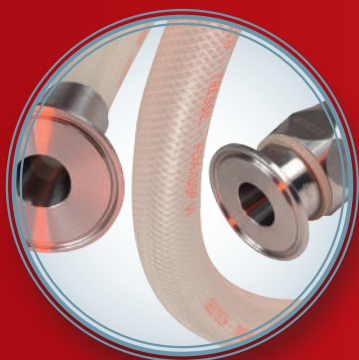
- Pharmaceutical, food, biotechnology applications
- High flexibility
- Steam sterilization / autoclave, CIP cleaning
- Compliance with FDA, USP Class VI, BfR, 3A

**PLATINUM
CURED**



GSI 75 NT/NTP®

Smooth silicone tube, white or translucent.
Textile and embedded stainless steel
wires reinforcement. White or translucent
silicone cover.



TRESSIL®

Translucent silicone tube.
Embedded textile reinforcement.
Silicone cover.



SPIRSIL®

Translucent silicone tube.
Embedded stainless steel wires
reinforcement. Translucent
silicone cover.



SILICONE TUBE

Extruded silicone tube.

ELASTOMER HOSES

- Food and cosmetic applications ■
- Alcohols, Fatty substances ■
- Steam sterilization, CIP cleaning ■
- Compatible with metal detectors* ■

NR



* Vaproprocess® and Maxifood®

DEPOTAL DOCK®

Food grade quality white smooth NR tube.
Synthetic textile with embedded steel helix reinforcement
Smooth blue natural rubber cover.

EPDM



DEPOTAL®

Food quality white EPDM tube.
Textiles plies and embedded
galvanized steel wires reinforcement.
Blue EPDM cover.

VAPROCESS®

Food quality white EPDM tube.
High resistance synthetic plies
reinforcement. Micro perforated blue
EPDM cover.

EPDM



MAXIFOOD®

Food quality white EPDM tube.
High resistance synthetic plies
reinforcement. Smooth grey synthetic
rubber cover.

BUTYL



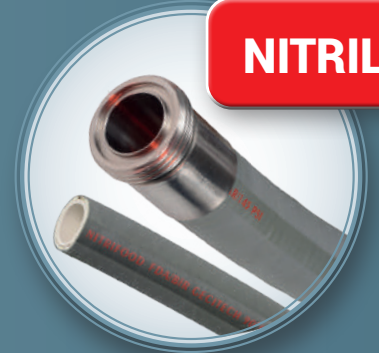
BLUTECH®

Light butyl (BIIR) tube. Embedded
textile plies and galvanized steel
wires reinforcement. Blue butyl cover.

VTA®

Smooth white butyl tube.
Embedded steel braid reinforcement.
Microperforated grey butyl cover.

NITRILE

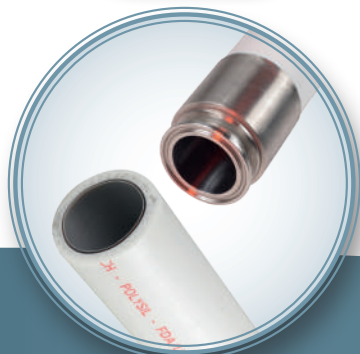


NITRIFOOD®

White nitrile tube (NBR).
Embedded textile plies
and galvanized steel wires
reinforcement. Light grey
chloroprene cover.

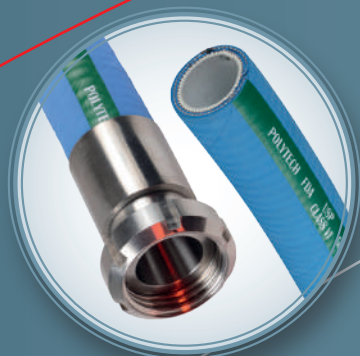
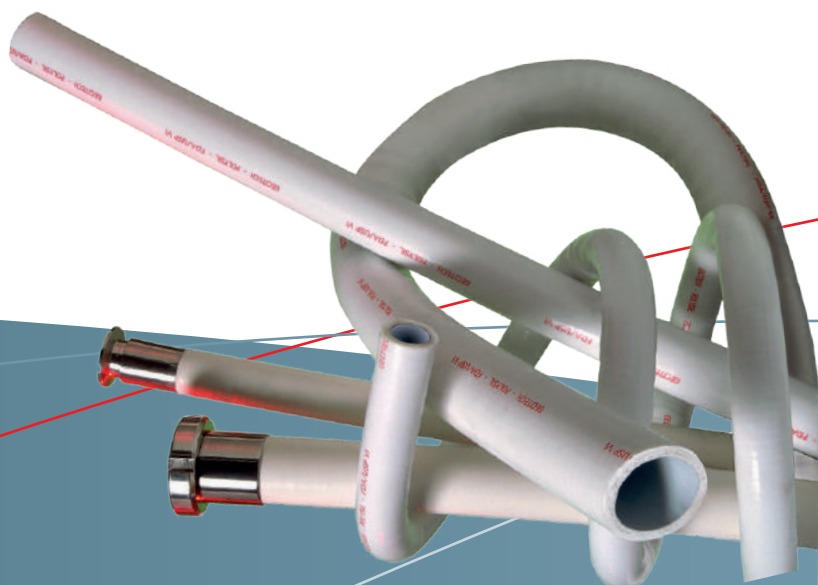
THERMOPLASTIC HOSES

PFA



POLYSIL®

Ultra smooth, inert and non-adhesive PFA fluoropolymer tube. Textile plies and embedded stainless steel wire reinforcement. White silicone cover.



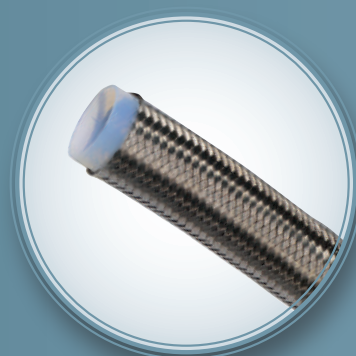
POLYTECH®

Ultra smooth, inert and non-adhesive PFA tube. Textile plies and embedded galvanized steel wires reinforcement. Blue EPDM cover.



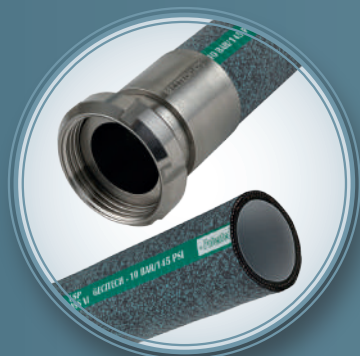
FLEXAL TECH®

Smooth transparent technopolymer tube. High resistant textile plies and embedded galvanized steel wires reinforcement. Smooth blue technopolymer cover.



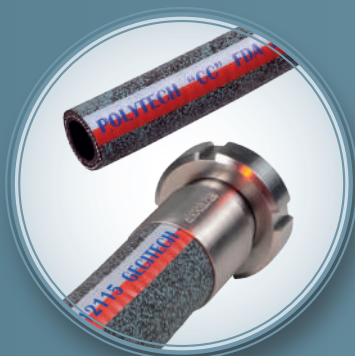
SMOOTH PTFE

Smooth PTFE tube, covered with a 304L stainless steel braid.



POLYTECH® CP

Ultra smooth, inert and non-adhesive PFA tube. Textile plies and embedded galvanized steel wires reinforcement. Antistatic EPDM cover, marbled finish green / black.



POLYTECH® CC

Ultra smooth, inert and non-adhesive antistatic PFA tube. Textile plies and embedded galvanized steel wires reinforcement. Antistatic EPDM cover, marbled finish blue / black.

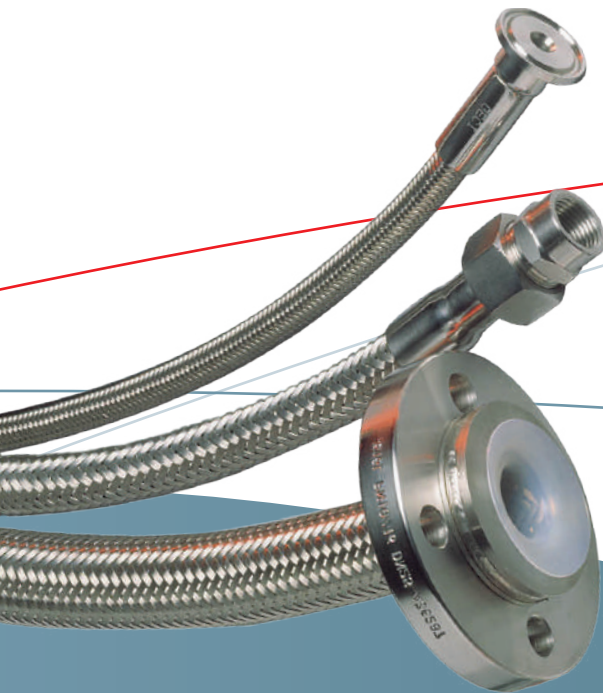


MFA

VIEWLINE®

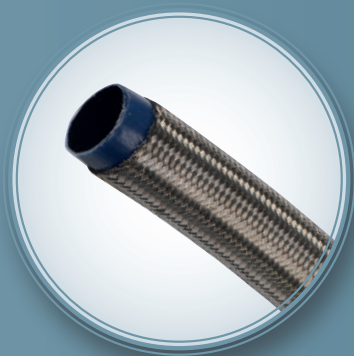
Translucent MFA fluoropolymer tube. Can be reinforced with an external stainless steel guard according to the ratio pressure / temperature.

- Food, pharmaceutical, cosmetic and biotechnology applications



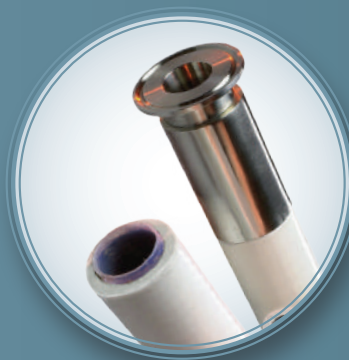
- Wide chemical compatibility
- Transfer of aggressive products
- ATEX versions

PTFE



SMOOTH PTFE CARBON-FILLED

Smooth carbon-filled PTFE tube, covered with a 304L stainless steel braid.



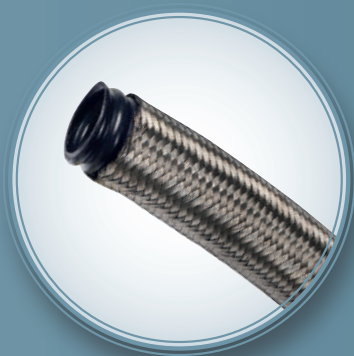
SILFLON®

Smooth PTFE tube, covered with a stainless steel braid. Textile plies and stainless steel wires reinforcement. White silicone cover.



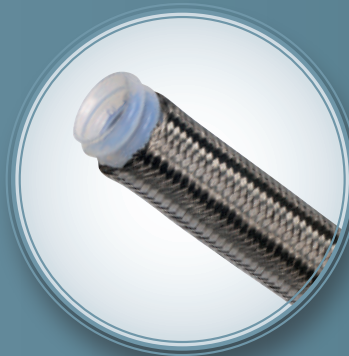
SILFLON SC®

Smooth bore PTFE tube, covered with a stainless steel braid. White silicone cover. Very high flexibility. The PTFE can be virgin or carbon loaded.



CONVOLUTED PTFE CARBON-FILLED

Convoluted carbon-filled PTFE tube, covered with a 304L stainless steel braid.



CONVOLUTED PTFE

Convoluted PTFE tube, covered with a 304L stainless steel braid.



PTFE THP+

Heavy wall smooth PTFE tube, antistatic or not, covered with two aramid braids and a high tensile 304L stainless steel braid.

CORRUGATED HOSES

- High security under extreme working conditions
- Resistance to high pressure and temperature
- High tightness

**INOX
316L**

**PARRAP®, PARNOR®,
PARMECA®, PARADE®**

Corrugated 316L stainless steel tube, mechanically formed or hydroformed, covered with a 304L stainless steel braid.



OTHER PRODUCTS



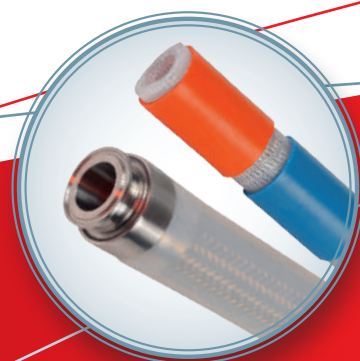
DOUBLE SLEEVE HOSE

To maintain temperature.



HEATED HOSE WITH ELECTRONIC CONTROLLER

To maintain temperature.



SILICONE SLEEVE / COLOR IDENTIFICATION

External protection.



GECIFLEX® PU/AL

Translucent polyurethane polyester tube. Stainless steel wire reinforcement. Available in antistatic ATEX version (GECIFLEX® PU/AL/EX).



GECIFLEX® TPU

Smooth transparent technopolymer tube. High resistant synthetic plies and AISI 302 stainless steel wires reinforcement. Smooth transparent technopolymer cover. Available in antistatic ATEX version (GECIFLEX® TPU/AS).

TRACEABILITY by GECITECH

Traceability of your equipment software and maintenance assistance tool

- Adapted to any type of equipment (hoses, pumps, valves...)
- Identification by RFID chips, Data Matrix, QR Code labels
- Operations scheduling with deadline alert system
- History of the events
- Can be interfaced with a CAMM (according to feasibility)



FITTINGS AND ASSEMBLING CONCEPTS



316L stainless steel fittings manufacturing:
SMS, DIN, CLAMP, RJT, ISS, FIL, GAZ, NTP, JIC,
FLANGES, BEVEL SEAT, etc.



NRS® (Non Retention System)

Swaged, aseptic without retention

Clean in place (CIP), Standard internal roughness < 0.8 µ, External polishing, 3A validation.



MSP®

Reusable, assembly and disassembly on site,
no equipment required

For GSI® hoses. Aseptic without retention zone,
Clean in place (CIP), Autoclavable, 3A validation.



VNRS®

Reusable, illimited assemblies and disassemblies

For Tressil® hoses. Aseptic without retention zone,
Clean in place (CIP), Autoclavable, 3A validation.



FERRULES

Reusable, quick and easy to assembly for
immediate breakdown assistance

Clean in place (CIP)

Innovative flexibility

» Designer and French manufacturer since 1986

Created in 1986, GECITECH has developed a unique know-how in designing and manufacturing flexible hoses and stainless steel fittings for the food, pharmaceutical, chemical, cosmetic and biotechnology industries.

Thanks to its strong experience and a policy focused on customers' satisfaction and innovation, GECITECH now occupies a leading position on the global market place.

» Expertise and innovation

Staffed with highly qualified engineers, the R&D department operates upstream of the production to guarantee the good fit between the specific needs and the given solutions.

- Help for drawing up the specifications ;
- Recommendations ;
- Tailor-made solutions ;
- Test phase monitoring ;
- Production programming.

» Demand for quality

At GECITECH, the quality is based on a full integration and a solid control of the production chain.

- Hoses manufacturing: silicone extrusion, braiding, knitting, spiraling following the Good Manufacturing Practices defined in the Guidelines Eudralex ;
- Machining of 316L stainless steel fittings and other alloys upon request: SMS, CLAMP, DIN, ASME BPE, ISO,...;
- Hoses assembly with NRS® swaged fittings or reusable aseptic fittings ;
- Three levels of traceability in the production process: standard, high, ultra high.

Thanks to this A to Z mastery, GECITECH is able to offer its clients high quality products, meeting the most demanding international standards: FDA, USP Class VI, BfR, ATEX, Regulations (EC) 10/2011, 1935/2004, 3A ...



GECITECH has been ISO 9001 certified since 2005

Europe Branch - GECITECH Headquarters

Z.A. Pesselière - 10 rue Joseph-Marie Jacquard - 69780 Mions - FRANCE
mail@gecitech.fr - ☎ +33 (0)478 206 525 - 📠 +33 (0)478 218 560

USA Branch - GECITECH, LLC

357 Spook Rock Road - Suffern, NY 10901
sales@gecitech.com - ☎ + 1 845 357 3900

Japan Branch - GECITECH, ASIA CO., Ltd

2-20 Misaki-Cho, Chiyoda-Ku - Tokyo 101-0061
info@gecitech.co.jp - ☎ +81 (3) 3263-7317

Indian Branch - GECITECH India Pvt. Ltd.

G1/2, Kalpita Enclave, Sahar rd,
Andheri East - Mumbai 400069
sales@gecitech.in - ☎ +91 93 2325 5578

www.gecitech.com