



نيو جيرسي للتجارة ذ.م.م. Newjersey Trading L.L.C.

Ensuring the security of packaging and giving every business the most appropriate products and services for Marking & Coding, Automation of Garage and Industrial Doors and End of the Line Packaging for its needs: it was on the basis of these sound principals that we established Newjersey Trading LLC in 1994 and we have never stopped improving to provide our customers with innovative solutions to their packaging requirements.

The company has been a pioneer in this region for Marking & Coding Systems which focuses on printing directly on the product, packaging and even directly on food. Automation of Garage and Industrial Doors which we represent MARANTEC which is prominent German Manufacturer and End of the line Packaging systems which includes Strapping System, Stapling Systems, Stretch Wrapping System, Shrink Wrapping System, Taping System etc.

Hitachi UX2 Inkjet Printer



TIJ Printer



Industrial Mobile Electronic Stamps



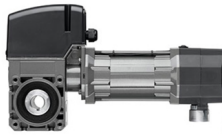
Laser Printer



Garage Door Operator



Sectional Door Operator



Steel Strap



**Stretch Films
(Hand & Machine Grade)**

Continuous Inkjet Printer (CIJ/IJP)

CIJ/IJP printer is the short form for continuous inkjet printer. This kind of printing is primarily used for coding and marking of products. In the technology of CIJ/IJP printers a pump directs fluid from a reservoir tank to one or more small nozzles which eject a continuous stream of drops at high frequency.

The drops pass through a set of electrodes which impart a charge onto each drop. The charged drops then pass a deflection plate which uses a field to deflect the drops which should be printed. Undeflected drops will be collected and returned for re-use.

The high drop ejection frequency of CIJ printers gives a capability for very high speed printing and is suitable for applications such as date coding on beverage cans, cable or packaging.

Substrates: Plastic, glass, metal, cardboard or directly onto food.



Item		Small characters			
		UX-B160W	UX-D160W	UX-E160W	UX2 UX2-D160W
Nozzle size		65µm			65µm
Max. print line number		Up to 3 lines	Up to 6 lines	Up to 6 lines	up to 6 lines
Maximum number of print characters		Up to 240 characters	Up to 240 characters (Option: Up to 1,000 characters)	Up to 1,000 characters	240 characters (option: up to 1,000 characters)
Font (Horizontal × Vertical)	4 × 5	✓	✓	✓	1 to 6 lines (Short printhead option : up to 2 lines)
	5 × 5	✓	✓	✓	1 to 6 lines (Short printhead option : up to 2 lines)
	5 × 7(8), 9 × 7(8)	✓	✓	✓	1 to 4 lines (Short printhead option : up to 2 lines)
	7 × 10	✓	✓	✓	1 to 4 lines (Short printhead option : up to 2 lines)
	11 × 11	✓ (Chinese only)	✓ (Chinese only)	✓ (Chinese only)	1 to 3 lines (Short printhead option : 1 line)
	10 × 12	✓	✓	✓	1 to 2 lines (Short printhead option : 1 line)
	12 × 16	✓	✓	✓	1 to 2 lines (Short printhead option : 1 line)
	18 × 24	✓	✓	✓	1 line
	24 × 32	—	✓	✓	1 line
	30 × 40	—	✓	✓	1 line
36 × 48	—	✓	✓	1 line	
Character height		2 - 10 mm			2-10mm (optional short print head: 2.0-6.5mm)
Display & input device		WYSIWYG design Display: TFT LCD (10.4" color), backlight provided Input device: Touch panel, input sound provided			WYSIWYG design Display: 10.1" color TFT LCD, WSVGA(1024×600) Input device: Touch panel, input sound provided
Screen language (2 languages selectable)		English, Chinese, Korean, Thai, Vietnamese, German, French, Dutch, Italian, Spanish,Portuguese, Swedish, Danish, Greek, Russian, Czech, Polish, Arabic, Serbian, Turkish, Hungarian, Bulgarian, Catalan, Romanian, Finnish, Norwegian, Slovenian			English, Chinese, Korean, Thai, Vietnamese, German, French, Dutch, Italian, Spanish,Portuguese, Swedish, Danish, Greek, Russian, Czech, Polish, Arabic, Serbian, Turkish, Hungarian, Bulgarian, Catalan, Romanian, Finnish, Norwegian, Slovenian
Maximum print rate (Characters per second) (Font 5x5, space 1, 1 line)		Up to 1,148 (Option: Up to 1,281 *)	Up to 1,148 (Option: Up to 2,563 *)	Up to 2,296 (Option: Up to 2,563 *)	Up to 1,538 (option: up to 3,076)
Standard characters		Alphanumeric (A-Z, a-z, 0-9) , symbols (27) and space: Total 90			Alphanumeric(A-Z, a-z,0-9), symbols(27) and space: Total 90
User pattern		50 patterns each for dot matrix	200 patterns each for dot matrix (50 patterns for 30×40 and 36×48 fonts)		200 patterns each for dot matrix (50 patterns for Free size)
Print functions		Calendar, Count, Font mixture			Calendar, Count, (Option: Shift code)
Barcode printing		—	code39, ITF, NW-7, EAN-13, EAN-8, UPC-A, UPC-E, code128/EAN-128, GS-1 DataBar		code39, ITF, NW-7, JAN-13, JAN-8, code128/EAN128, UPC-A, UPC-E, GS-1 Databar
2D code printing		—	Data Matrix (Alphabet: 49 characters/Numerals: 98 characters), QR, Micro QR code		Data Matrix (Alphabet: 49 characters/Numericals: 98 characters), QR code (Alphabetical characters only: 61, Numbers only: 101), Micro-QR code (Alphabetical characters only: 11, Numbers only: 18)
Message storage capacity		150 messages	300 messages [Option: Up to 2,000 messages (Depends on data content)]	2,000 messages (Depends on data content)	300 messages (option: up to 2000 messages)
Input signal		Print target detection Rotary encoder pulse (NPN/PNP Selectable)	Print target detection, Printing stop, Rotary encoder pulse, Reciprocativ printing,Remote control (Run, Stop, High-voltage ON/OFF, Reset), (NPN/PNP Selectable)		Print target detection, Printing stop, Rotary encoder pulse, Reciprocativ printing, Remote control (Run, Stop, High-voltage ON/OFF, Reset), (NPN/PNP selectable)
Output signal		Print ready, Fault, Warning (NPN Only)	Print in progress or Print complete, Online (NPN/PNP Selectable), Print ready, Fault, Warning (NPN Only)		Print in progress or Print complete, Online (NPN/PNP selectable), Print ready, Fault, Warning (NPN only)
Data interface		Option (RS-232C at baud rates selectable up to 115,200bps)	RS-232C at baud rates selectable up to 115,200bps		USB/RS-232 Converters at baud rates selectable up to 115,200bps
Ethernet (Modbus communication)		—	IEEE802.3 , 100BASE-T		Modbus, EtherNet/IP, OPC-UA
External memory		USB for user data storage			
Printhead cable length / angle		4m (in-line/90 degrees)			4m (in-line/90 degrees)
Operating temperature range		0-50°C (1067K Ink)			0-50°C (1067K Ink)
Operating humidity range		30-90% RH (no condensation)			30-90%RH (no condensation)
Power supply (Automatic voltage selection)		AC100-120/220-240V±10% 50/60Hz 120VA			AC100-120/200-240V±10%, 50/60Hz
Approval		CE, UL, cUL, RCM, FCC, ICES		CE, RCM	
Dimensions (Width x Depth x Height)		400 x 320 x 527 mm			460×425×534mm (Width×Depth×Height)
International protection		IP55	IP65		IP65



Thermal Inkjet Printers (TIJ/Thermal IJP)

In thermal transfer digital print modules, the ink is contained in cartridges. Inside the cartridge, electrical micro resistors generate tiny steam bubbles, which burst to project the ink through a nozzle from above, in the form of droplets. Thermal ink-jet print modules are typically used for affixing batch numbers, expiry dates, barcodes, 2D codes, texts and all sorts of logos.

These devices don't take up much space, and are equipped with a special display to digitally monitor graphics. They can be used for marking directly onto the product or the product's label.

Substrates: Plastic, glass, metal, cardboard or directly onto food.



Industrial Marking Stamps

Handheld inkjet printing stamps that marks documents and/or products simply and quickly. In addition to number, date, time and text, these devices can also print graphics and barcodes. It is also possible to print on non-absorbent surfaces such as metal and plastic. The stamps are mobile, handy and easy to operate. They come complete with their own software



Technical Data

Model	<i>jetStamp graphic 970</i> <i>jetStamp graphic 970 MP</i> Page 4	REINER 940 REINER 940 MP Page 5
Prints number:	•	•
Prints time:	•	•
Prints date, text:	•	•
Prints graphic, barcode:	•	•
Print width:	max. 65 mm	max. 140 mm
Figure size:	up to 12.7 mm	up to 12.7 mm
Number of copies:	–	–
Inking standard:	Cartridge inkjet P-3S, black or magenta	Cartridge inkjet P-3S, black or magenta
Inking metal and plastic:	Cartridge inkjet P-3MP3, black (quick drying)	Cartridge inkjet P-3MP3, black (quick drying)
Visual display:	–	–
Noise level:	< 60 dBA	–
System of printing:	inkjet	inkjet
Triggering by:	button in the handle	button in the handle
Date setting:	via PC (software included)	via PC (software included)
For easy document positioning:	freely positionable	freely positionable
Variable Line printing:	multiline	multiline
Cover:	silver-grey	black
Dimensions L x W x H:	140 x 160 x 85 mm	47 x 147 x 221 mm
Charging station:	155 x 140 x 30 mm	
Weight:	about 520 g	about 530 g
Interface:	USB or Bluetooth	USB or Bluetooth

Stamp - 990	
Imprint:	Number, date, time, text
Prints from:	PCset
Display:	Display available
Dimensions (L x W x H):	100 x 80 x 160
Dimensions base station (L x W x H):	115 x 145 x 35
Weight:	Approx. 500 g
Character font:	2 lines
Data transfer:	USB, Bluetooth, WiFi/WLAN capable
Storable print images:	25 storable print images
Print technology:	Inkjet
Max. print area dimension (W x H):	42 x 3,2 mm
Max. print speed:	< 1 s/imprint
Print resolution:	96 dpi
Battery capacity:	500 imprints
Color:	grey
Order No.	990 000-000 <i>jetStamp</i> ® 990 incl. case



Laser Printer



Lasers can mark and process a wide variety of products, but there's no one-size-fits-all answer for every application. Fiber, CO₂ and UV laser markers perform differently depending on the application and material.

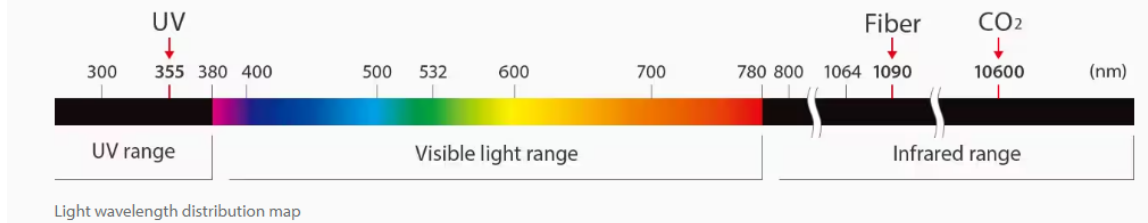
Here's a brief overview of Fiber, CO₂ and UV laser technology. We've also included some sample marking videos that highlight the strengths and weaknesses of each system.

Fiber, CO₂ and UV Laser Basics

The most important difference between Fiber, CO₂ and UV laser markers is the wavelength of light they produce.

Short wavelengths typically have more energy and a higher absorption rate than long wavelengths. As a result, a laser's wavelength affects its ability to mark certain materials.

The features of and marking examples for the different wavelength types are introduced below.



SPECIFICATIONS :-

LASER PRINTER	UV Laser Printer	Fiber Laser Printer	CO ₂ Laser Printer
Laser Power	5W/10W	50W	30W
Wavelength	355nm	1064nm	9.3um
Control System Genuine Software	10 inch High Speed Control System	High Speed Printing Control System	High Speed Printing Control System
Min. Character	≥0.2mm	0.015mm	0.2mm
Min. Line Width	≥0.1	0.01-0.2mm	0.01-0.2mm
Marking Speed	≤10 m/s	≥5 m/s	≥10 m/s
Net Weight	110kg.	65kg.	65kg.
Working life	50,000 hours	100,000 hours	50,000 hours



End of the line Packaging Material

Newjersey is industrial packaging material and supply specialist with over 25 years of experience. Our strong relationships within the industry have been built over 2 decades of operation, and they allow us to offer some of the best prices available to our wholesale clients. Newjersey provides our clients with best wholesale prices on Strappings, Tapes, Stretch wrap film, Packaging Tools & Machinery, Protective packaging etc.

Strapping System



Composite
Polyester Strap



PET Strap



Steel Strap



PP Strap

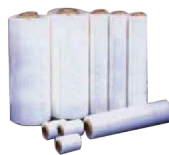


Carton Strapping
Machine

Stretch Wrapping System



Stretch Wrapping
Machine



Stretch Films
(Hand & Machine Grade)



Stretch Wrapping
Machine

Stenciling / Taping System



Stenciling Machine
& Rollers



BOPP / PVC Tapes



Carton Taping
Machine

Stenciling / Taping System



Battery
Operated
Machine



Tensioner
& Cutter



Dispenser



Pneumatic
Strapping
Machine



Sealer



Tensioner



Seals
& Buckles





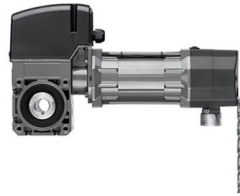
نيو جيرسي للتجارة ذ.م.م.
Newjersey Trading L.L.C.

Garage Door Automation



Garage Door Openers (Overhead): Motors used for residential sectional doors..

Motor	Max. Push & pull force(Newtons) (Newtons)	Max. Travel speed (mm/s)	Max. Door Weight (kg)
Marantec Comfort 260	550	160	90
Marantec Comfort 270	750	160	160
Marantec Comfort 280	1000	160	200
Marantec Comfort 370	850	235	185
Marantec Comfort 380	1100	180	220



Industrial Sectional Door Motors (Side Motor): Motors used for residential and industrial sectional doors

Motor	Nominal Voltage (V AC)	Max. Door Weight (kg)	Max. Door Surface Area (sqm.)	Protection Class
Marantec STA 1-11-19	4003/~	390	30	IP65
Marantec STA 1-12-19	4003/~	585	45	IP65
Marantec STA 1-7-19	230/1~	260	20	IP65



Sliding Gate Automation - Outdoor gates and openers must be designed to withstand a variety of working conditions: rain, wind, cold and heat place high demands on the material and functionality. The use of high-quality, maintenance-free materials guarantees the longevity and trouble-free use.



Parking barriers and Bollards provide safe and reliable access to underground garages, parking areas and works entrances and allow authorized persons to enter in a matter of seconds.