

*Adam Succulent Fusions is Adam's premier line of Green & Black Ceylon Teas. A select collection of Adam's best sellers in Asia & Europe. Adam procures exquisite Ceylon tea then blends, flavors, packs & exports. Only Sri Lanka's finest teas are adorned with the coveted "Lion Seal". The entire Succulent Fusions line is made of this tea. Adam's custom flavoring is both succulent and extremely long lasting. Consistent high quality tea & extraordinary flavoring makes Succulent Fusions the best envelope tea available in America.*



# Succulent Fusions

Exquisite Flavored Black & Green  
Ceylon Teas from Sri Lanka



*Legendary Black Ceylon Tea*  
Brilliantly Aromatic with a full  
body and legendary finish



*Legendary Green Ceylon Tea*  
Richly aromatic with a Delicate  
body & smooth clean finish



*Earl Grey Black Ceylon Tea*  
Perfectly aromatic with a full legendary  
body and lasting finish

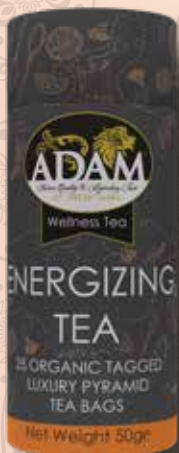


*English Breakfast Black Ceylon Tea*  
Subtly aromatic with a full body  
and clean, kick-start your day finish

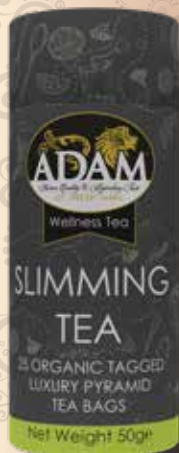
# Adam Wellness

## Canistor Range

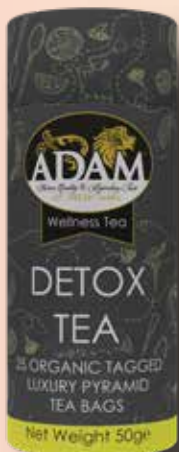
Adam's wellness tea collection is the epitome of opulence, offering teas that go beyond refreshment. Meticulously crafted to enhance one's journey towards a healthier life.



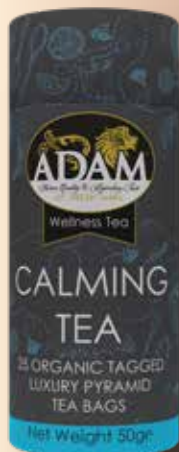
Energizing Tea  
Perfect for a busy day



Slimming Tea  
compliments for burning fat



Detox Tea  
Herbal mix that help detox



Calming Tea  
After a busy day



### *Mellow Mint Black Ceylon Tea*

Fresh mint aroma with a bold body and clean warm finish



### *Mellow Mint Green Ceylon Tea*

Richly aromatic with a delicate body & smooth clean fresh mint finish



### *Luscious Lemon Black Ceylon Tea*

Subtle fresh summer warmth with a bold body and smooth finish



### *Luscious Lemon Green Ceylon Tea*

Richly aromatic with a delicate full body, hints of lemon & a smooth clean finish



### *Caramel Delight Black Ceylon Tea*

Delightfully buttery caramel aroma with a rich body & indulgent finish



### *True Cinnamon Black Ceylon Tea*

Gently aromatic and warm with a bold body and rich finish





***Mandarin Orange Black Ceylon Tea***  
 Subtle aromatic hints of orange with a delicate body and smooth warm finish



***Strawberry Fields Black Ceylon Tea***  
 Aroma of fresh ripe strawberries with a delicate full body & smooth clean finish



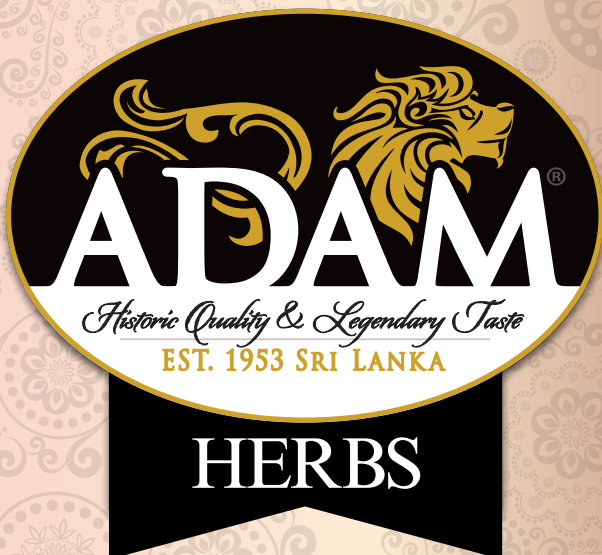
***Luscious Peach Black Ceylon Tea***  
 Aroma of fresh juicy peach with a bold body and smooth finish



***Raspberry Fields Black Ceylon Tea***  
 Aroma of fresh ripe raspberries with a delicate full body & smooth clean finish

## ***Loadability***

24 Units in a Case | Case Weight: 2.64 lbs  
 Case Dimensions in Inches 12.28 X 10 X 8.3  
 80 Cases per Pallet | Pallet Weight: 211.2 lbs  
 4 Yr Product Shelf Life | 11 Mo. Shelf Life  
 Guaranteed at Delivery  
 Units Dimensions in Inches 2.4 X 5.9 X 2.6



## *Health benefits of Adam Tea & Herbs Tea*

*Antioxidants are substances that are capable of counteracting the damaging effects of the oxidation process in our tissues by neutralizing free radicals. In doing so, the antioxidants themselves become oxidized. These substances are vitamins, minerals and enzymes which Adam Tea has in high quantities.*

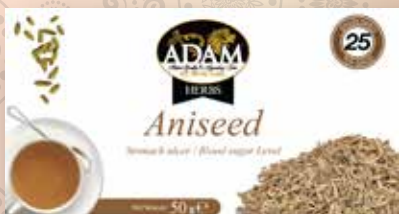
*Antioxidants are believed to play a role in preventing the development of such chronic diseases as cancer, heart disease, stroke, Alzheimer's disease, Rheumatoid arthritis, and cataracts*



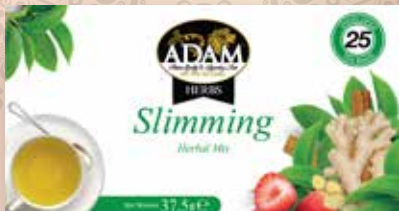
*Green tea is one of the most popular and healthiest beverages on the planet. Among the health benefits of green tea, antioxidants and nutrients that have powerful effects on the body. These include improved brain function, fat loss, a lower risk of cancer and many other impressive benefits.*



*Moringa leaves provide a great natural energy boost and is rich in potassium, calcium, and iron. It also contains over 20 types of essential amino acids, vitamins, and trace minerals.*



*Anise seed is a powerful plant that is rich in many nutrients and boasts a wide array of health benefits. It has anti-fungal, antibacterial and anti-inflammatory properties and may fight stomach ulcers, keep blood sugar levels in check and reduce*



*Slimming herbal mix provide a great natural boost fat loss, promotes healthy skin and hair, while giving a refreshing strawberry taste.*



*Hibiscus petals provide a great natural boosts Antioxidant and anti-inflammatory, prevents colds and flu, lowers blood pressure, boosts liver health, promotes healthy skin and hair, Supports heart health and more.*



*Mint leaves provide a great natural boost for digestive and respiratory health. It's rich with antibacterial and anti-fungal properties. It also helps with nociception, migraine and headache.*



*Chamomile is one of the ancient medicinal herbs known to be used for fever, inflammation, muscle spasms, menstrual disorders, insomnia, ulcers, wounds, gastrointestinal disorders, rheumatic pain, and hemorrhoids.*

## *Loadability*

*24 Units in a Case | Case Weight: 2.64 lbs*

*Case Dimensions in cm 32 X 20.5 X 31*

*3 Yr Product Shelf Life*

*Guaranteed at Delivery*

*Units Dimensions in cm 15 X 6.8 X 7.9*







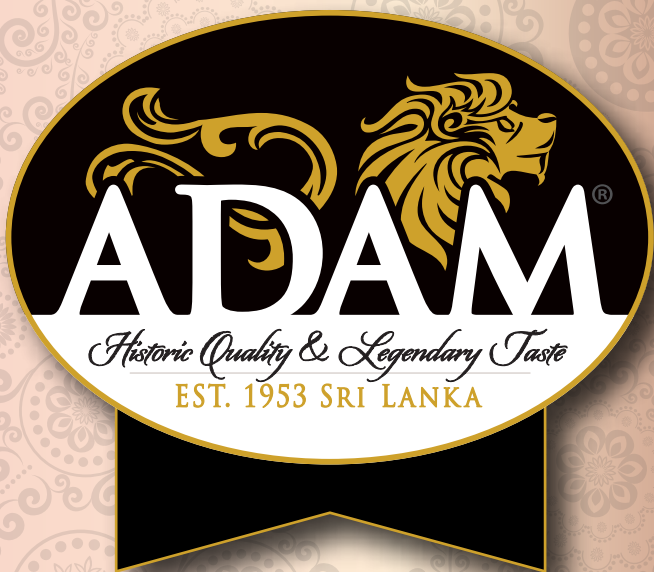
P R E M I U M  
100% Pure  
**BLACK TEA**



"Adam" tea is a blend of the best black teas specially created to give you a tea with a bright colour, pleasing aroma and a rich smooth taste.

Available as blends of Ceylon and other origin teas

Loadability : 1 X 40 FT FCL  
3,400 M/CTNS OF  
12 X 100 X 1.5 GMS  
DOUBLE CHAMBERED  
STRING & TAG TEABAGS



By

**ADAM EXPO**

Estd 1973

*No. 370, SEDAWATTA ROAD,  
WELLAMPITIYA, SRI LANKA.*

*TEL: +94 11 7608500.*

*E-MAIL: [tea@adamexpo.net](mailto:tea@adamexpo.net),*

*Website: [www.adamexpo.net](http://www.adamexpo.net)*



FSSC 22000



**FDA**  
Approved

**Sedex**