



EZ EVENT CASE STUDY



PROJECT STATS

- Access Points: 100+
- Area: 71,642 SQM
- Coverage: 100%

INDUSTRY

- Events

PROJECT SCOPE

- Guest Wi-Fi
- Staff Wi-Fi
- Retail WiFi
- Network Monitoring
- Indoor/outdoor Wi-Fi Roaming
- Branded Captive Portal
- Wi-Fi Analytics
- Bandwidth Management
- 24/7 EZE LINK NOC Services

RESULTS

- 99.9% uptime
- Seamless Connectivity
- Enhanced User Experience
- High Performance
- Social Engagements

Delivering High-Performance Wi-Fi in Challenging Environments

The Tanweer Festival is a three-day cultural celebration featuring live music, art, workshops, and a vibrant marketplace. It brings together diverse backgrounds, honoring traditional wisdom and supporting tribal communities worldwide. Held under the desert sky, it fosters unity, self-discovery, and cultural appreciation.

Objective

EZE LINK's mission at the Tanweer Festival was to deliver reliable, high-capacity Wi-Fi connectivity to meet the needs of both festival operations and visitor engagement. The festival required robust connectivity to facilitate seamless communication for the event's management and a positive, uninterrupted experience for attendees, enabling them to fully engage in workshops,

Project Scope

- **Wi-Fi Coverage:**
Indoor and outdoor network setup covering key festival zones, such as the marketplace, workshops, stargazing areas, and performance spaces, as well as back-end operational zones for festival staff.
- **Network Capacity:**
High-density planning to support thousands of users simultaneously without lag or connectivity drops.
- **Secure Visitor Authentication:**
Implementation of Captive Portal Authentication to manage visitor access efficiently, ensuring security and ease of use for attendees.
- **Support for Staff Operations:**
Separate and secure Wi-Fi for the festival's operations team to streamline communication and logistics management.

Challenges

The Tanweer Festival presented several unique challenges for EZELINK in implementing an effective Wi-Fi solution:

1. Remote Desert Location: The festival's remote, open-air desert setting posed significant infrastructure challenges. There was no existing network or connectivity framework, requiring a comprehensive setup from the ground up. Unlike urban settings, there was limited access to stable power sources, and environmental factors like sand and heat needed to be considered in both planning and equipment choice.

2. Limited Backhaul Connectivity: The short backhaul line available posed a substantial constraint, as it limited the bandwidth accessible for the high-density network setup needed for thousands of visitors. To overcome this, EZELINK optimized bandwidth usage and carefully managed network load to maximize performance within these constraints.

3. High User Demand in a Small Coverage Zone: The festival's key areas were densely packed with attendees, demanding high-speed connectivity in a limited space. This required precise placement and configuration of access points to minimize signal interference while providing robust, stable connections.

4. Dynamic Visitor Movement and Peak Usage: With events, workshops, and performances happening simultaneously, attendees frequently moved across different zones. EZELINK's network design needed to support seamless transitions as users moved around the venue without interruptions to their connectivity.



EZELINK's goal was to provide high-capacity, reliable Wi-Fi to support festival operations and enhance visitor experiences.

Implementation Approach

1. Site Survey and Network Planning

A comprehensive site survey was conducted to identify optimal access point placements and to assess potential connectivity challenges in the desert environment. This informed a customized network design tailored for both large open spaces and enclosed activity areas.

2. Equipment and Configuration

High-performance access points and network switches were deployed strategically to ensure seamless coverage across the festival grounds. Equipment was configured to handle high user volumes and minimize interference across different zones.

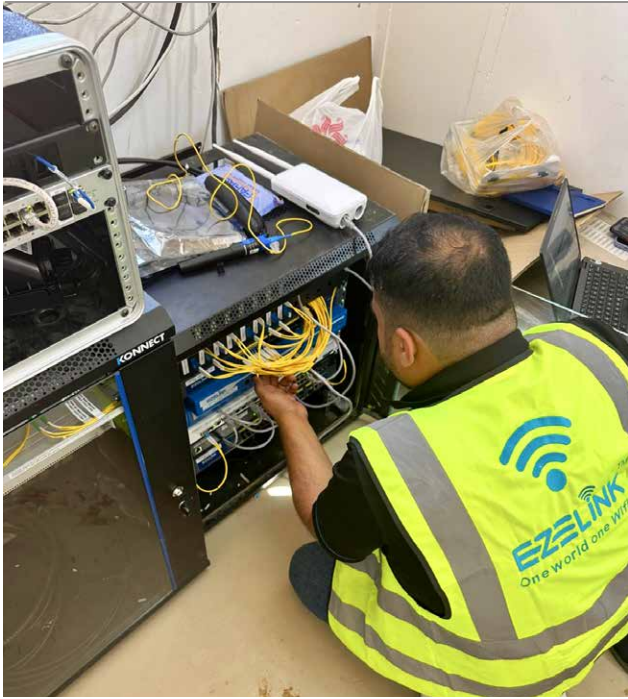
3. Security and Authentication

EZELINK employed Captive Portal Authentication to provide a smooth and secure sign-in experience for visitors. Network segmentation was applied to provide separate, secure channels for both festival-goers and staff, ensuring that operations ran efficiently without disruption.

4. Real-Time Monitoring and Optimization

Throughout the event, EZELINK's technical team monitored network performance to adjust configurations dynamically, ensuring steady, high-quality connectivity even during peak times.





Outcomes and Impact

The Wi-Fi solution provided by EZE LINK significantly enhanced the experience for both visitors and festival staff. Key benefits included:

Enhanced Visitor Engagement:

Attendees enjoyed uninterrupted access to share their experiences, access event schedules, and connect with other festival-goers.

Operational Efficiency:

The operations team experienced improved communication and coordination, ensuring that the festival ran smoothly and efficiently.

Data Insights:

EZE LINK's solution provided valuable insights into user engagement patterns, which can be utilized for planning future events.



Seamless Wi-Fi in Extreme Desert Conditions



Thousands of Users Supported Without Lag

Real-Time Monitoring Ensured 24/7 Connectivity

Conclusion

The deployment of EZE LINK's Wi-Fi services at the Tanweer Festival successfully met the demands of both operational logistics and visitor engagement. The solution highlighted EZE LINK's expertise in delivering secure, high-performance Wi-Fi connectivity for large-scale events in challenging environments, reinforcing their position as a leading provider of reliable Wi-Fi solutions. Feedback from both the festival organizers and attendees was highly positive, affirming EZE LINK's role in enabling a connected, inclusive event experience.

