



*“Keeping your fleet
on track....”*

Corporate Profile



Message from the CEO

With over 20 years of innovation and excellence, Fleet Management Systems International (FMSi) stands as a leading provider of fleet management and asset tracking solutions in the region. Our journey began with pioneering collaborations in the Oil & Gas sector and has since expanded to logistics, construction, car rentals, municipalities, FMCG, and other industry sectors. This evolution has provided us with a deep understanding of the unique challenges within each industry. We have strengthened our regional presence through the establishment of local offices and a robust network of partners. Our certifications and approvals from local regulators, including transportation authorities and oil and gas operators, underscore our commitment to delivering not only the best solutions but also compliant ones, reflecting our thorough understanding of local and regional needs.

In recent years, FMSi has advanced its offerings with cutting-edge solutions delivered on a powerful and scalable unified platform. Our services in Vehicle Telematics, AI Video Telematics, Journey Management, Route Optimization, all offered as SaaS and powered by artificial intelligence and data insights and analysis, showcase our dedication to innovation. This progression has allowed us to surpass 150,000 subscribers, significantly enhancing safety, efficiency, and sustainability for our partners and customers.

Looking ahead, we are committed to maintaining our leadership in innovation and excellence. FMSi aims to remain at the forefront of the telematics industry, providing unparalleled services and upholding the highest standards of quality through our ISO certifications for quality and safety. Our value proposition enables our customers to address their business needs with a single provider, ensuring consistent service across the region, local support, and compliance with local regulations.

I extend my gratitude to our clients, partners, and team. Together, we will continue to innovate, adapt, and achieve new milestones.

Wassim Mourad, CEO



*Leading regional
provider of fleet
and mobile assets
management
solutions*

About Us

Founded in 2003 and headquartered in the UAE, Fleet Management Systems International (FMSi) has established itself as a pioneering leader in fleet management and asset tracking across the GCC and MENA regions. With a regional presence that includes offices in UAE, Saudi Arabia, Oman, Iraq, Erbil, and an extensive network of partners throughout the region, we specialize in providing innovative solutions for managing information for a diverse range of assets such as light and heavy vehicles, trucks, buses, trailers, and heavy machinery.

Our expertise lies in delivering cutting-edge telematics solutions through our unified, powerful, and scalable Software as a Service (SaaS) platform. This platform offers comprehensive features such as fleet management, journey management, route optimization, and data analytics, all designed to provide organizations with full visibility and control over their mobile assets.

At FMSi, our mission is to enhance operational efficiency, optimize performance, and ensure safety and sustainability, all while meeting stringent in-country regulatory compliance requirements. We are dedicated to empowering organizations with the tools they need to achieve their goals and drive success in a dynamic and evolving markets.

Top-Quality Components

Our technical expertise and meticulous approach ensure that we select and integrate the most suitable hardware, sensors, and peripherals to meet your specific project requirements and operational challenges. Leveraging our extensive experience with leading industry vendors, we provide and incorporate top-tier AI Video Telematics devices, sensors, and peripherals. This commitment guarantees that your projects receive the highest quality components, ensuring reliability and performance even under the most demanding conditions.



Uncompromised Quality in Installation Services

At FMSi, our unwavering commitment to quality is evident in every aspect of our installation services. Adhering to the highest standards and certified under ISO 45001:2018, our installations are conducted by certified and highly trained technicians. We believe that every detail matters, and our rigorous approach ensures that our installations—whether performed on-site or at our facilities—are executed with precision and excellence. Our professional installation engineers are dedicated to applying the highest standards, guaranteeing that your hardware is installed flawlessly and contributes to the successful implementation of your projects. Uncompromised reliability is at the core of what we do, and we take pride in delivering exceptional quality in all our services.

Key Facts

20+

Years of Fleet Experience

2000+

Companies Trust FMSi

150k+

Connected assets under management for Powerful Insights

40+

Regional Partners

7+

Local Offices

150+

Multicultural and Diverse Employees

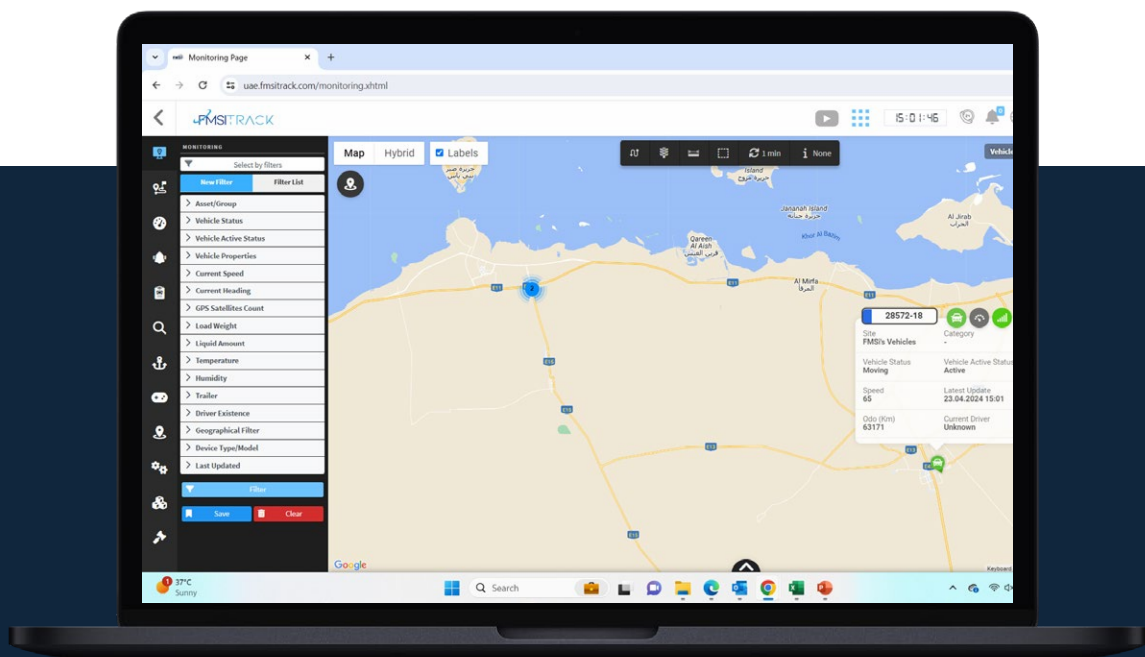
Solution Overview



FMSiTrack: All-around Telematics Platform

User-friendly. Powerful. Scalable.

FMSiTrack is an innovative, feature-rich solution designed to streamline your monitoring, analytics, management, and maintenance processes. FMSiTrack system offers a suite of comprehensive tools, each module purpose-built to enhance your user experience and augment your operational efficiency. In-house developed platform, designed with user-friendliness in focus.



Monitoring module



Reports



Trip Analyzer



Dashboards



Alarms and Notifications



Heatmap



Hour of Service (HOS)



Mobile Application (iOS/Android)

90%

Decrease in idling

40%

Decrease of fuel costs

90%

Risky driving avoidance

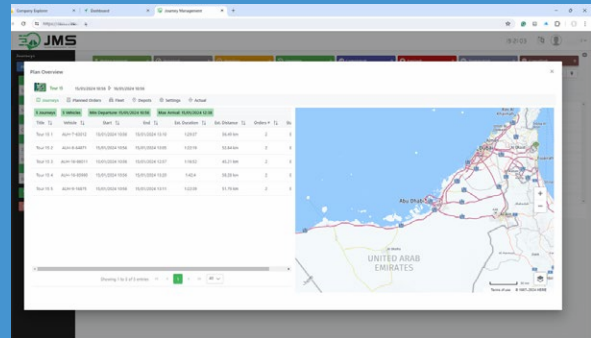
30%

Reduced vehicles downtime

Scalable Add-On Software Modules

Journey Management System & Route Optimization (JMS)

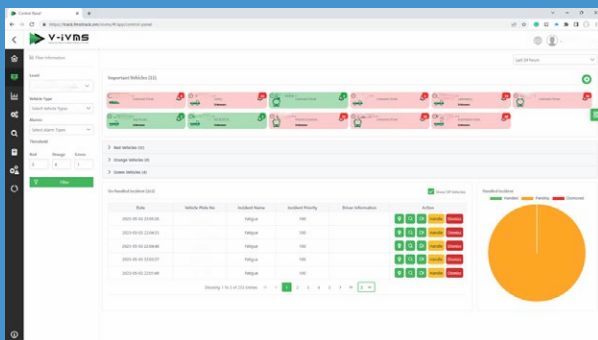
Our Journey Management & Route Optimization module streamlines fleet operations by analyzing and optimizing routes in real-time. This module enhances efficiency by reducing travel time, fuel consumption, and operational costs. It ensures timely deliveries and maximizes resource utilization, leading to improved overall fleet performance.



- Journey Planning
- Customizable Risk Assessment
- Instant Alarming
- Mobile App for Drivers
- Multi-Stop Route Planning
- Dynamic Re-Routing
- Real-time Traffic Updates

Enterprise AI Video Management (VIVMS)

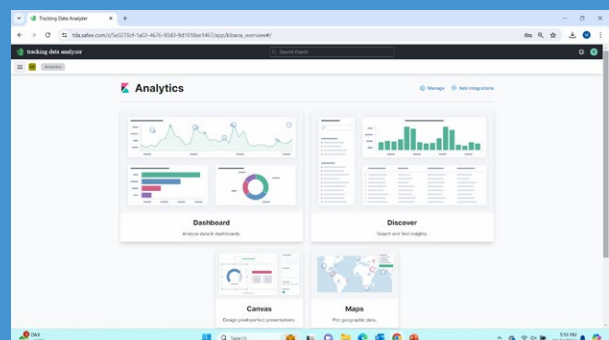
The Enterprise AI Video Management module provides comprehensive surveillance and analysis capabilities. It integrates with AI-powered video telematics to monitor driver behavior, detect incidents, and capture critical events. This module enhances fleet safety, supports incident investigations, and provides valuable insights for improving driving practices and reducing risks.



- 360° Visibility
- AI-Detected Driver Fatigue & Distraction Events
- Instant In-cab Audio, Visual, Vibration Alerts for Drivers
- Mitigate Risks and Prevent Accidents
- Live Stream, Playback and Video Downloading
- Collision-Avoidance System

Data Insight (TDA)

Our Data Analytics (TDA) module delivers powerful insights by analyzing fleet data to identify trends, patterns, and areas for improvement. It supports data-driven decision-making, enhances operational efficiency, and drives strategic planning. By leveraging advanced analytics, this module helps optimize fleet performance, reduce costs, and achieve operational excellence.



- First BI tool for Fleets
- Birdview Fleet Efficiency
- Customizable Dashboards, Reports and Charts
- Create Your Own Telematics Widgets

AI Video Telematics: Next Generation Safety

Our AI-powered video telematics solutions enhance fleet safety with advanced features and innovative technologies aimed to bring fleet safety to the next level. Powered by in-house developed platform and global leading video telematics hardware, we are empowering fleets with preventive tools to mitigate the risks on the road.



! Driver Distraction Monitoring

👁️ Tailgating Monitoring

😞 Driver Fatigue Control

📞 Phone Usage Monitoring

↔️ Lane Detection Control

🚧 Road Traffic Regulation Violation Control

50%

Drop in road collisions

40%

Decrease at-fault collisions

80%

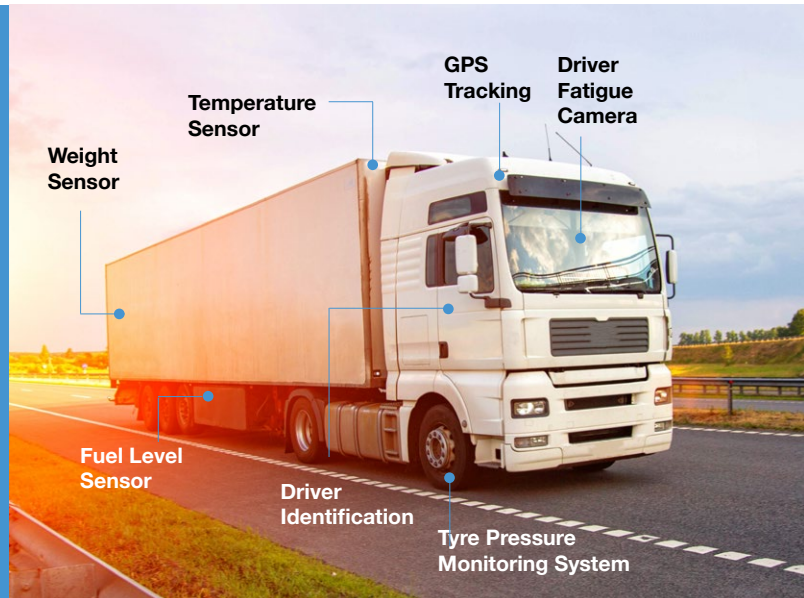
Cut in risky driving behaviour

40%

Cut in claims costs

Enhanced Fleet Control with Advanced Sensors and Peripherals

Our comprehensive fleet management system is augmented by a range of advanced sensors and peripherals, providing an extra layer of control and insight into your operations. These add-ons integrate seamlessly with our core platform, delivering a holistic approach to fleet management that enhances safety, operational efficiency, and compliance with industry regulations.



Driver Identification

ensures that only authorized personnel access and operate the vehicles, enhancing security and accountability.



Temperature & Humidity Sensors

crucial for maintaining optimal conditions for sensitive cargo, preventing spoilage and ensuring compliance with regulatory standards.



Fuel Control

manage fuel expenses, prevent thefts, optimize consumption and achieve bottom-line savings.



CAN-Bus Reading

delivering detailed information on vehicles performance and health to the cloud.



Door Sensors and Trailer Tracking

offers real-time monitoring of cargo security and trailer locations, reducing the risk of theft and loss.



Panic Button

provides an immediate alert mechanism for drivers in emergencies, enhancing safety on the road.



Multi Speed Limiters

helps enforce speed regulations, promoting safer driving habits and reducing the risk of accidents.



On-Board Weighing Sensors

optimize load management and ensure compliance with weight restrictions, preventing overloading and associated penalties.



Satellite Back Up

In areas with limited GSM coverage, our satellite backup system ensures uninterrupted connectivity.



Tire Pressure Monitoring System (TPMS)

enhances safety, fuel efficiency, and tire lifespan by providing real-time alerts for proper tire inflation and preventing issues that can lead to costly maintenance and operational inefficiencies.

Trusted By Global & Regional Companies

Oil & Gas



Oil Field Services



Construction & Building Materials



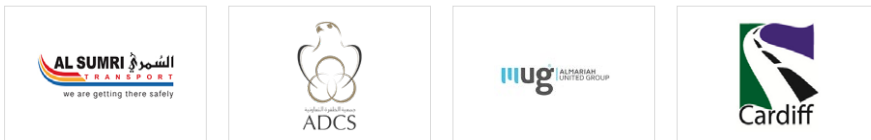
Construction & Engineering (EPC)



Transportation & Logistics



Passengers Transportation



Multi-Industry Enterprises



Manufacturing & Industrial



Leasing & Car Rental



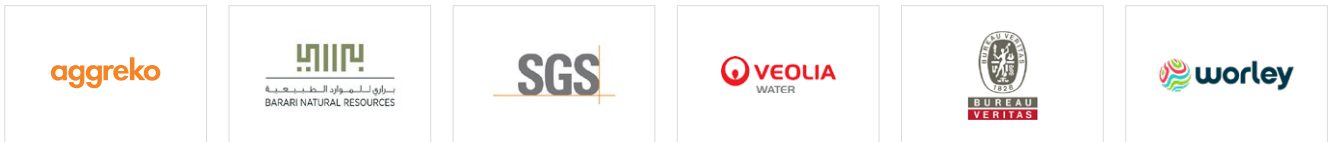
Government & Utilities



FMCG, Distribution & Retail



Field & Services



Catering



Approvals & Certifications





Abu Dhabi Head Office

Building No. B06, Shop No. S5, Sector M-44,
Mussafah, Abu Dhabi – UAE

+971 2 641 2526
+971 4 360 6781

info@fms-international.com

Dubai Office

Binary Tower, Marasi Drive - Business Bay
21st Floor - Unit 2101/09
Dubai – UAE

+971 4 360 7671
+971 4 360 6781

info@fms-international.com



www.fms-international.com