



Superior Ingredients,
Innovative Creations

Company Overview

Brief History And Our Founding Story

Patis Food Group started its journey as a chocolate brand in 2004 in Ankara, Türkiye. This sweet tale, guided by Swiss chocolate experts, continues with a vision to offer the highest quality and most delicious chocolates appealing to the palate not only of Turkey but of all World.

Our story showcases how natural and fresh Turkish flavors can be combined with carefully selected high-quality chocolates, revealing the wonders that can be created from a cocoa bean. These chocolates, crafted with passion like works of art, offer special flavors tailored to many tastes.

Today, expanding from a 200-square-meter boutique production area to a 40,000-square-meter closed area and employing over 800 staff, 70% of whom are women, Patis Food Group maintains its tradition of handmade production with three factories. Additionally, it broadens its portfolio by including additional product lines such as creams, spreads, granola, and muesli alongside chocolates.

PATIS
FOOD
GROUP





PATIS
FOOD
GROUP

Mission

To delight our consumers with innovative and high-quality food products that blend creativity and superior content, enhancing everyday life with exceptional culinary experiences.

Vision

To be the leading food company renowned for its innovative products and creative solutions, setting the standard for quality and excellence in the industry while inspiring healthier and happier communities around the world.

Brand Purpose

We are here to offer innovative products to our consumers by combining our creativity with high-quality content.



PATIS
FOOD
GROUP

**Baskent OSB
Factory**

**Anadolu OSB
Factory**

**Ostim OSB
Factory**

Factory Production Lines

- **AASTED CHOCOLATE &**
- **CONFECTIONARY LINE**
- **CHOCOLATE PRODUCTION LINE**
- **DRAGEES LINE**
- **CARLE & MONTANARI OPM LINE**
- **SOLLICH CHOCOLATE COATED LINE**
- **SPREAD and PASTE LINE**
- **BAR LINE**
- **CHOCOLATE MOULDING LINE**
- **BAKERY LINE**
- **GRANOLA PRODUCTION LINE**
- **MC WRAPPING MACHINE LINE**

PATISWISS *ich*

▣ PATIS FOOD GROUP

PATISWISS

FROZEN FRESH
ICY BITES





FROZEN FRESH
Fresh as Ice Cream



DOUBLE FLAVORED FROSTED
in Crispy Chocolate



REAL FRUIT
100% Natural



CLEAN INGREDIENTS
Made with Fruit and Chocolate





Milk & White Chocolate Coated
Strawberry Icy Bites 250g



Dark & White Chocolate Coated
Strawberry Icy Bites 250g





Milk & White Chocolate Coated
Raspberry Icy Bites 250g



Dark & White Chocolate Coated
Raspberry Icy Bites 250g





Milk & White Chocolate Coated
Blueberry Icy Bites 250g



Dark & White Chocolate Coated
Blueberry Icy Bites 250g





Milk & White Chocolate Coated
Blackberry Icy Bites 250g



Dark & White Chocolate Coated
Blackberry Icy Bites 250g





Milk & White Chocolate
Coated Cherry Icy Bites 250g



Dark & White Chocolate
Coated Cherry Icy Bites 250g





Milk Chocolate Coated
Banana Icy Bites 250g



Dark Chocolate Coated
Banana Icy Bites 250g

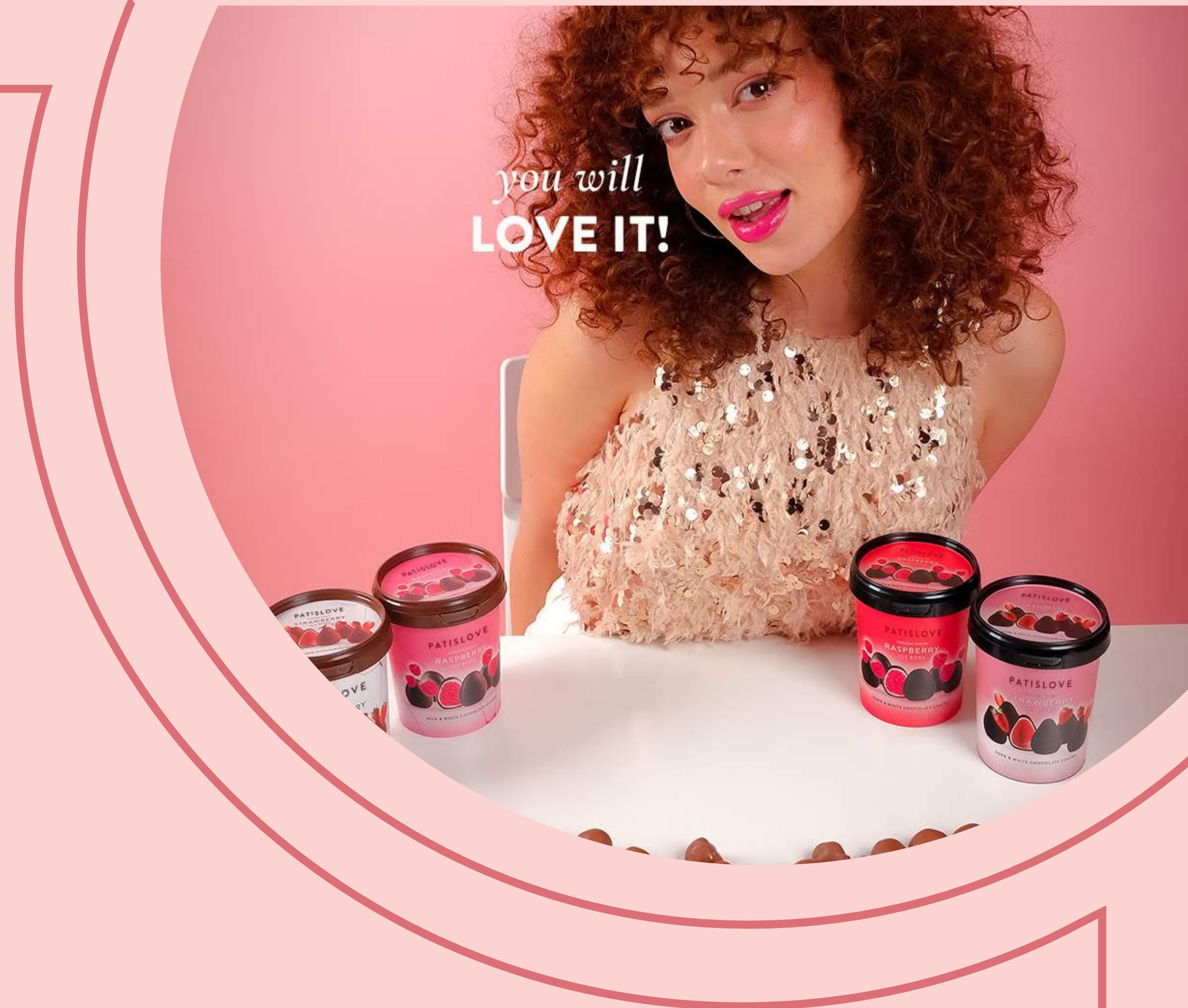




White Chocolate with Raspberry
Powder Coated Icy Bites 250g



Milk & White Chocolate
Coated Mango Icy Bites 250g





Milk & White Chocolate Coated
Berry Mix Icy Bites 250g



Kadayif & Chocolate Fudge Cake
Balls Icy Bites 250g

**BETTER AND HEALTHIER
ALTERNATIVE TO ICE-CREAM**
with real frozen fresh berries





White Chocolate with Pistachio
Raspberry Cream Coated Icy Bites 250g



Blueberry & Yogurt Powder
Coated Blueberry Icy Bites 250g



Peach & Yogurt Powder Coated
Peach Icy Bites 250g





Strawberry & Yogurt Powder
Coated Strawberry Icy Bites 250g



Raspberry & Yogurt Powder
Coated Raspberry Icy Bites 250g





| Superior Ingredients,
Innovative Creations.

Ankara / Türkiye HQ: Ostim OSB Mah. Cevat Dünder Cad. No:151 Yenimahalle, Ankara / TÜRKİYE

Ankara Ostim OSB: Ostim OSB Mah. Cevat Dünder Cad. No:153 Yenimahalle, Ankara / TÜRKİYE

Ankara Başkent OSB: Malıköy Başkent OSB Mah. 4. Cad No:9 Sincan, Ankara / TÜRKİYE

Ankara Anadolu OSB: Malıköy Anadolu OSB Mah. 12. Cad. No: 12 Sincan, Ankara / TÜRKİYE

İstanbul / Türkiye Office: Atatürk Mahallesi 3. Cadde No:1 Daire:1 Ataşehir, İstanbul / TÜRKİYE

Chicago / USA Office: 11417 Irving Park Rd (IL- 19), Suite #A-8, IL 60131 - 3882, Chicago / UNITED STATES

Düsseldorf / Germany Office: Im Taubental 8 41468 Neuss Düsseldorf / GERMANY

For further requirements: info@patisfoodgroup.com **Marketing:** marketing@patisfoodgroup.com | pfgmarketing@patisfoodgroup.com **Export:** export@patisfoodgroup.com