

Five Compelling Reasons to Make MultiCheck Your Choice

YOUR QUALITY IS OUR VISION.

YOUR QUALITY IS OUR VISION.



1.

Ultimate Food Safety and Quality Control

Harness the power of automated real-time detection, identifying **plastic contaminants** as small as 1 mm² with precision.

2.

Final Inspection Right Before Packaging

Eliminate the **risk** of contamination – products are securely sealed immediately after thorough inspection.

3.

In-Depth Detection of Hidden Foreign Objects

Our advanced system captures multi-angle **image sequences** during the product's fall through the multihead weigher, leaving no contaminant undetected.

4.

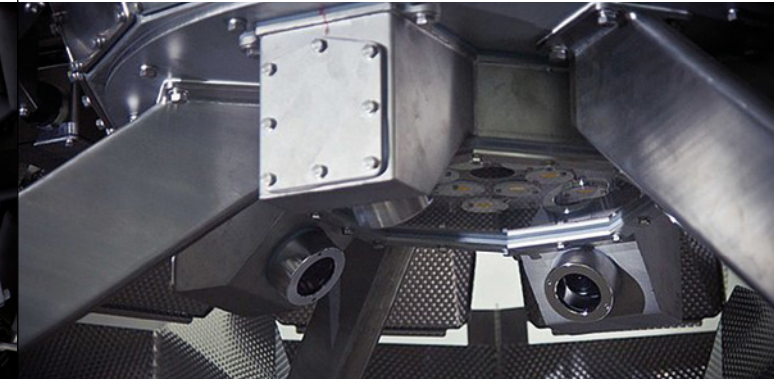
Seamless Integration

Compact, space-efficient design that effortlessly retrofits into both existing and new multihead weighers, ensuring minimal disruption and maximum efficiency.

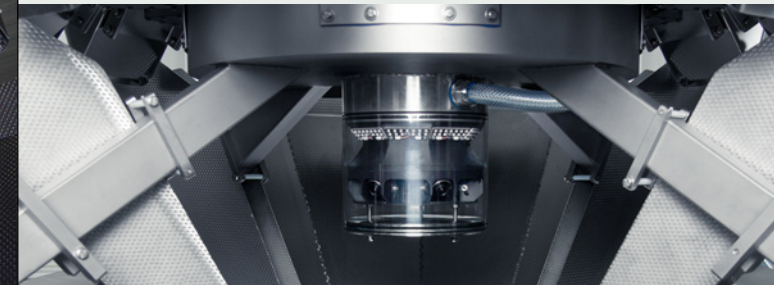
5.

Total Traceability with Comprehensive Documentation

Every detected foreign object is meticulously recorded in an internal **database**, available as detailed images and statistics, providing you with complete transparency and control.



MultiCheck & MultiCheck^{smart}



CLK GmbH

Zur Steinkuhle 3 · 48341 Altenberge
Phone +49 2505 93620-10 · vertrieb@clkgmbh.de
[in](https://www.linkedin.com/company/clkgmbh) [company/clkgmbh](https://www.linkedin.com/company/clkgmbh) · www.clkgmbh.de

**Automated
Foreign Object Detection
in Multihead Weighers**

www.clkgmbh.de

MultiCheck

Automated Foreign Object Detection in Large-Scale Multihead Weighers



› Hygiene:

Developed according to the guidelines of hygienic design

› Effortless Control with Intuitive Interface:

A user-friendly touchscreen that puts the power of precision at your fingertips, making operation smooth and simple

MultiCheck^{smart}

The Compact Solution for Small Multihead Weighers



› Lasting Clarity:

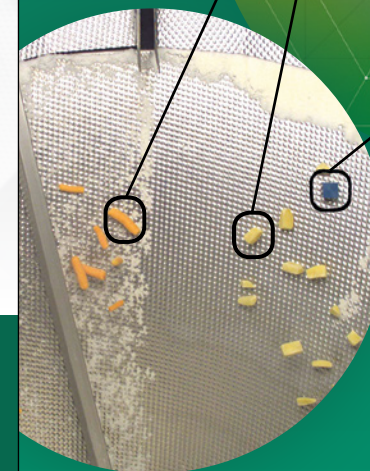
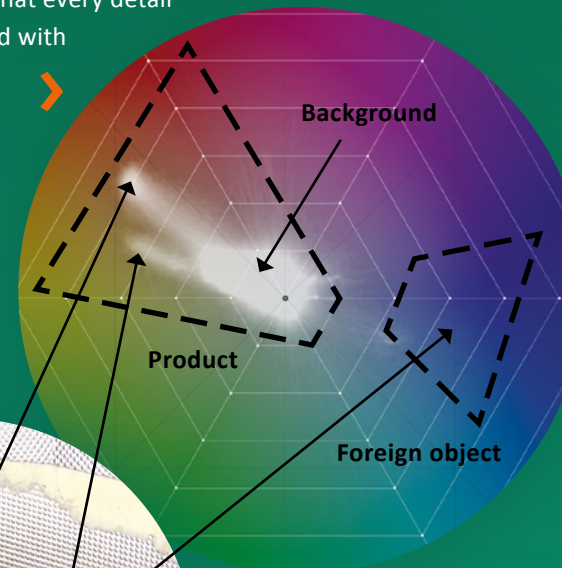
Equipped with scratch-resistant lenses that protect the cameras and lighting, ensuring a consistently clear view and reliable performance over time

› Minimal Maintenance, Maximum Durability:

Designed for robustness and longevity, this system offers exceptional durability with minimal upkeep, keeping your operations running smoothly

Unleash Precision with our MultiCheck Technology

MultiCheck technology isn't just advanced – it's a breakthrough in color analysis, harnessing the power of VIS and NIR spectrums to deliver unmatched accuracy. We expertly map specific color ranges to your products, background, and any unwanted elements (like foreign objects or discolorations), ensuring that every detail is captured with precision.



The color distribution image provides a comprehensive view, allowing you to swiftly and confidently differentiate foreign objects from your product, guaranteeing that only the highest quality reaches your customers.

MultiCheck
Sample image
with foreign objects

KEY ADVANTAGES:

WHAT SETS US APART:

- › Four powerful cameras provide unparalleled multi-angle inspection, leaving no defect undetected

- › Comprehensive Capability: Tailored for large operations, MultiCheck can be seamlessly integrated into multihead weighers with a diameter of up to 150 cm

- › MultiCheck Smart: Powered by 6 Precision Cameras Experience unparalleled inspection accuracy with six advanced cameras, ensuring every detail is captured

- › Compact Design: Featuring a sleek cylindrical form with a 20 cm diameter and a height of just 20-30 cm, this space-efficient design delivers high performance without taking up valuable space