



worldwide presence



watch the
video of our
complete line!



The Evolum + Dryer is available for testing in our pilot plant in France

The R&D center is fully equipped and led by multidisciplinary process experts :

- Food and Feed applications
- Green Extrusion applications
- Six Twin Screw Extruders from lab scale to semi-industrial scale
- Drying
- Sweet & Savory coating
- Many Clip-on Kits available: co-extrusion, crouton cutter ...

Leveraging its core expertise in twin-screw technology, Clextral provides its customers with complete processing lines that integrate extruders, dryers and ancillary equipment. Its reliable and innovative systems are quality and excellence benchmarks in its three key markets: extrusion, drying and coating.

Clextral is also designing and manufacturing high-precision industrial pumps for the energy and chemical markets. Its global offering includes upstream design and testing of industrial solutions, equipment manufacturing, on-site installation and full maintenance and continuous process improvement services.

Based in Firminy (France), Clextral is present on all five continents, providing local support to its customers all over the World.

CLEXTRAL

Firminy - 42 - FRANCE
tel : +33 4 77 40 31 31
Fax : +33 4 77 40 31 23
contact@clextral.com

www.clextral.com

EVOLUM + DRYER

HIGH VALUE DRYING EXPERTISE

**efficient drying
sturdy & hygienic design
safe operation**



CLEXTRAL

CONTACT US



www.clextral.com



CLEXTRAL A DIVISION OF GROUPE AGRI-INDUSTRIES

THE NEW STANDARD FOR DRYING EXCELLENCE

Clextral complete production lines integrate advanced equipment designs and process controls to carry out the key steps in transforming raw materials into high-quality products with exceptional added value :

extrusion cooking, coating, drying

the Evolum + dryer is a versatile system developed to meet the specific requirements for a large range of products. Its distinctive features ensure uniform and effective drying for maximum product quality.

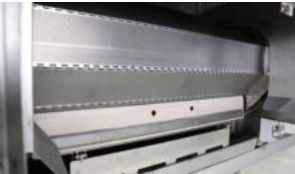
The Clextral Evolum + dryer benefits from enhanced aeraulics and high performance thermal insulation for optimized drying efficiency. The standard drying process is carried out using gas, but electrically-powered drying or steam drying are also available options.

In short, you benefit from our drying process expertise, user-friendly operation and secure technology to achieve superior quality for your products.

Door sensor IP69K



Helical spreader ensures level product bed



Self-tensioning stainless steel conveyor belt (lube-free)

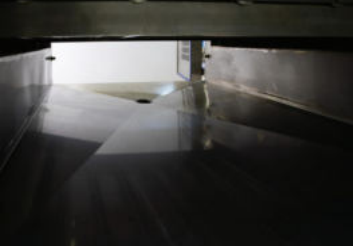


Adjustable spike roller gently separates coated products



HYGIENIC DESIGN designed to optimize food safety

The Evolum + Dryer is manufactured from stainless steel, fully welded without retention zones, suitable for washdown facilities and dry cleaning environments. This state-of-the-art dryer includes side panels that allow full access for cleaning and maintenance.

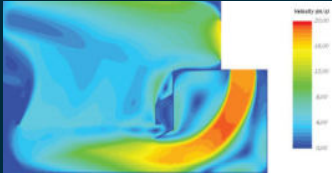


Sloping floor (water recovery)



ACCURATE DRYING PROCESS CONTROL

- Highly flexible
- Enhanced aeraulics
- Modular design of upward and downward airflow drying sections
- Optimized efficiency
- User-friendly
- Eco-designed
- Risk assessments & functional safety of control
- Highly efficient thermal insulation



Air velocity uniformity on product surface & through product layer = optimized airflow circulation

+ efficient drying

+ sturdy & hygienic design

+ safe operation

