



**ETST**  
ENGINEERING

***Efficiently Moving  
the Future  
Your Partner  
in Bulk Material  
Handling!***





Our team of seasoned professionals specializes in developing innovative strategies tailored to meet your unique operational challenges. From conceptualization to execution, we provide comprehensive support that transforms ideas into action, enabling you to achieve your mission objectives efficiently and effectively.

## OUR COMPANY

*E.T.S.T Engineering* specializes in comprehensive lean manufacturing solutions, offering a complete turnkey package that encompasses line engineering, construction, automation and commissioning. Our extensive range of technological solutions is tailored for diverse applications in bulk material handling, storage, blending, and packaging, ensuring efficient and effective operations for our clients.



### Mission

To attain regional leadership in innovative solutions, focus on gaining a comprehensive understanding of diverse sectors and improving project management and sustainability skills. Our goal is to strengthen client relationships, stay informed about industry trends, and implement best practices for enhanced efficiency.



### Vision

Our focus is to specialize in providing expert advice and solutions across various industries, focusing on enhancing operational efficiency, optimizing processes, and integrating advanced technologies.

## Why choose us?

### *Experienced*

Choosing us, means partnering with a team of experienced professionals dedicated to delivering tailored solutions that meet your specific needs. We combine industry expertise with latest technology to optimize project outcomes, ensuring timely delivery and cost-effectiveness. Our commitment to sustainability, safety, and innovative problem-solving sets us apart, while our collaborative approach fosters strong relationships and open communication throughout the project lifecycle. With us, you gain a reliable ally focused on your success.

### *Cost-Effective Solutions*

Having sustainable practices, and a strong track record in successfully managing diverse projects our focus on client collaboration ensures that specific needs are met, leading to efficient proj-

ect execution and value addition for businesses in various sectors. We provide professional support and innovative solutions to clients across various sectors, ensuring the successful design, implementation, and management of projects while fostering sustainable practices, adhering to industry standards, and enhancing overall efficiency and effectiveness.

### *Team Player*

ETST Engineering is focused on helping organizations achieve sustainable growth and improve their overall performance by delivering tailored strategies and innovative engineering solutions that meet specific industry challenges. ETST Engineering has become an expert in leverage expertise in systems engineering, and project management assisting clients in areas such as automation, quality assurance, and regulatory compliance.

# CORE SERVICE'S

**Engineering**

**Industrial  
Consulting**

**Project  
Management**

Design, Development  
and Planning

**EPC**

Engineering,  
Procurement, and  
Construction

**Value  
Engineering**

**Facility**

New Facility Development

**Existing Facility**

Rationalization  
Refurbishment  
Consolidation  
Relocation  
Extension

**Equipment**

Specification  
Procurement  
Installation  
Commissioning  
Testing

**Support**

Process Design  
Governance  
Research

**Manufacturing  
Footprint Analysis**

Capacity Planning  
Bottleneck Analysis  
Optimization  
Process Flow Analysis





# SECTOR'S



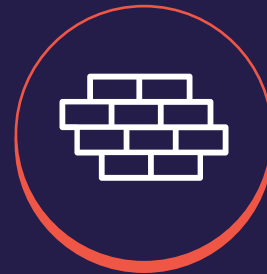
Food



Chemical



Plastic



Construction

# Bulk Materials Handling

Flours



Grains



snacks



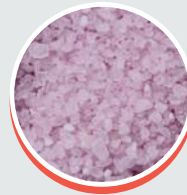
sugars



spices



Salts



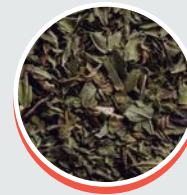
Coffee



Drink Mixes



Tea



Baking Mixes

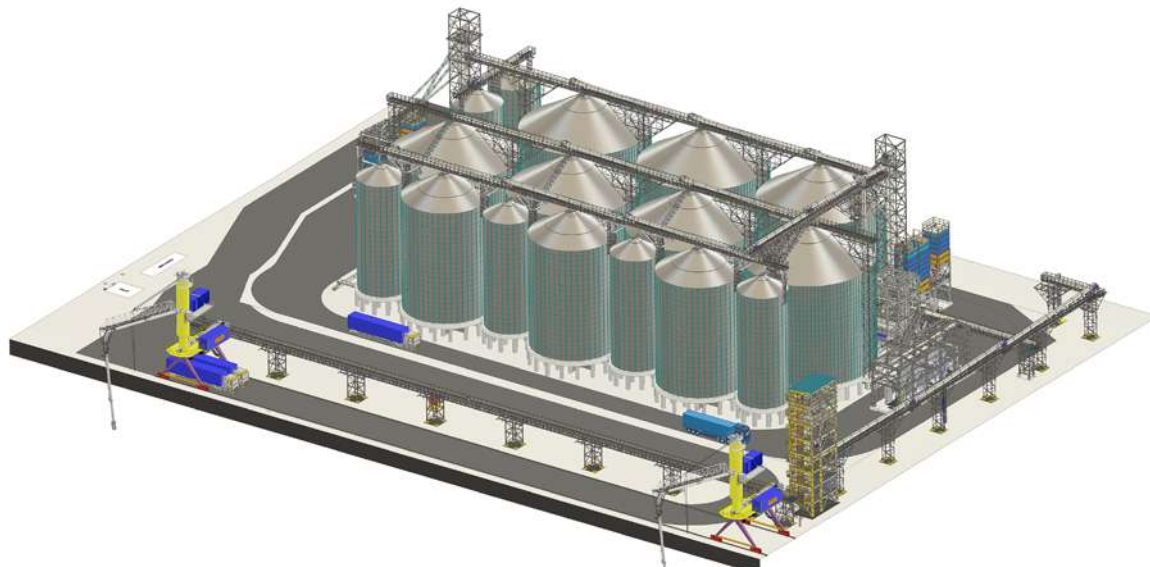


## Silo Storage and Handling Equipment

Experts in bulk material handling with the focus on designing and implementing systems for the

efficient transport, storage, and management of large volumes of materials

Food  
Pet food  
Animal feed  
Agriculture commodities



## Bulk Material Storage

Silo Storage and Handling Equipment  
Hopper Bins

## Bulk Material Conveying

Mechanical Conveying  
Pneumatic Conveying  
Vacuum Systems

## Big & Small Bag Handling

Small and big-bag Emptying System  
Big-bag Filling System  
Small bag filling system-manual and automatic



## Material Processing

*Grains, spices, sugar, coffee, food powder materials*

- Grinding
- Breaking
- Crushing
- Separation
- Fine industrial cleaning
- Pressing

## Material Screening

- Tumble sifters
- Compact sieves
- Horizontal sifters
- Magnetic separators
- Destoners
- Lump breakers
- Gravity separators

## Material Dosing & Material Mixing

*Feeders, conveyors, bucket elevators*

- Gates, diverters
- Dosing scales
- Micro-batch feeders
- Paddle mixers
- Double shaft ribbon mixers
- Double shaft paddle mixer

## Packaging Line and Robotic Palletizer



## Dedusting Solution

Capacity Range 5,000-100,000 m<sup>3</sup>/h



## Process Automation & Control

Our tailored design for automation monitoring and control of production processes for safety and efficiency can manage the entire production line, we offer services that include system integration,

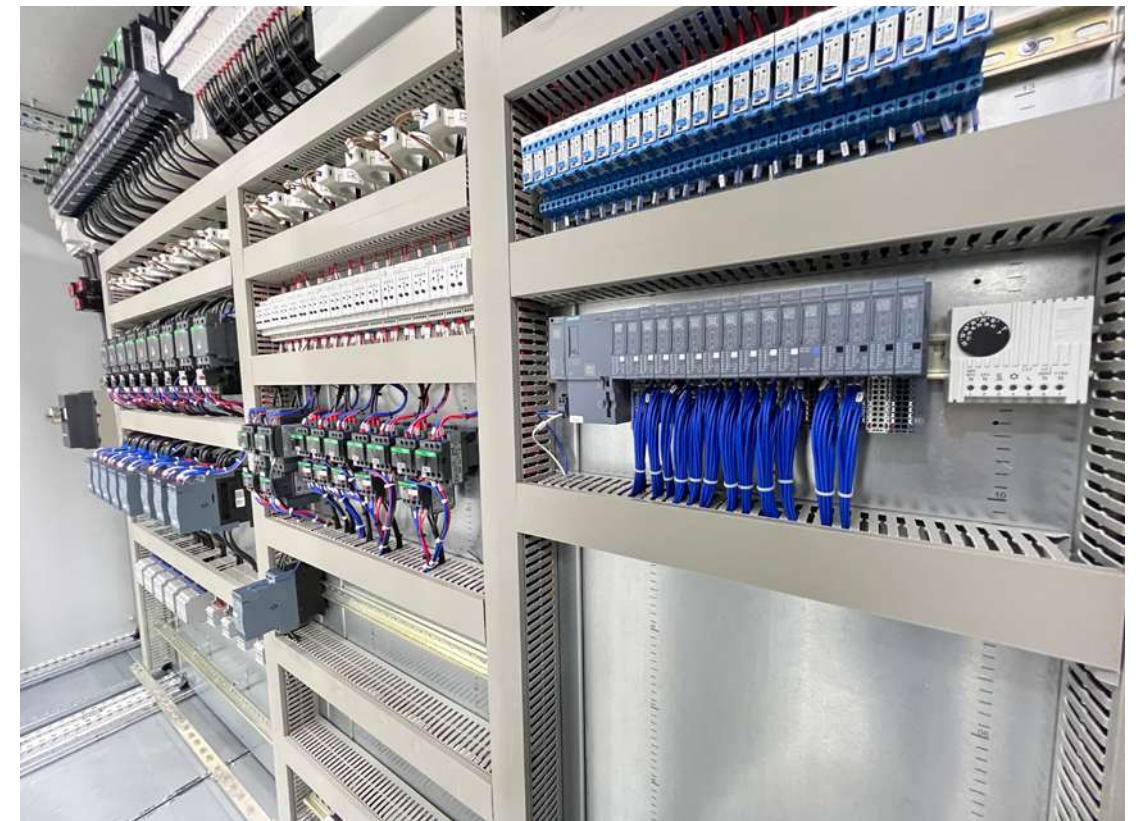
robotics implementation, and continuous process improvement, designed to optimize production lines and reduce operational costs.

## Industrial Automation Solutions & Control System Integration

With expertise in various industries, we design and implement scalable automation systems that enhance efficiency, reduce operational costs, and improve safety.

## Programmable Logic Controllers (PLCs)

Our expertise encompasses PLC design, installation, programming, and maintenance tailored to meet your operational needs. We offer custom solutions that integrate seamlessly with existing systems, ensuring optimal performance and reliability.

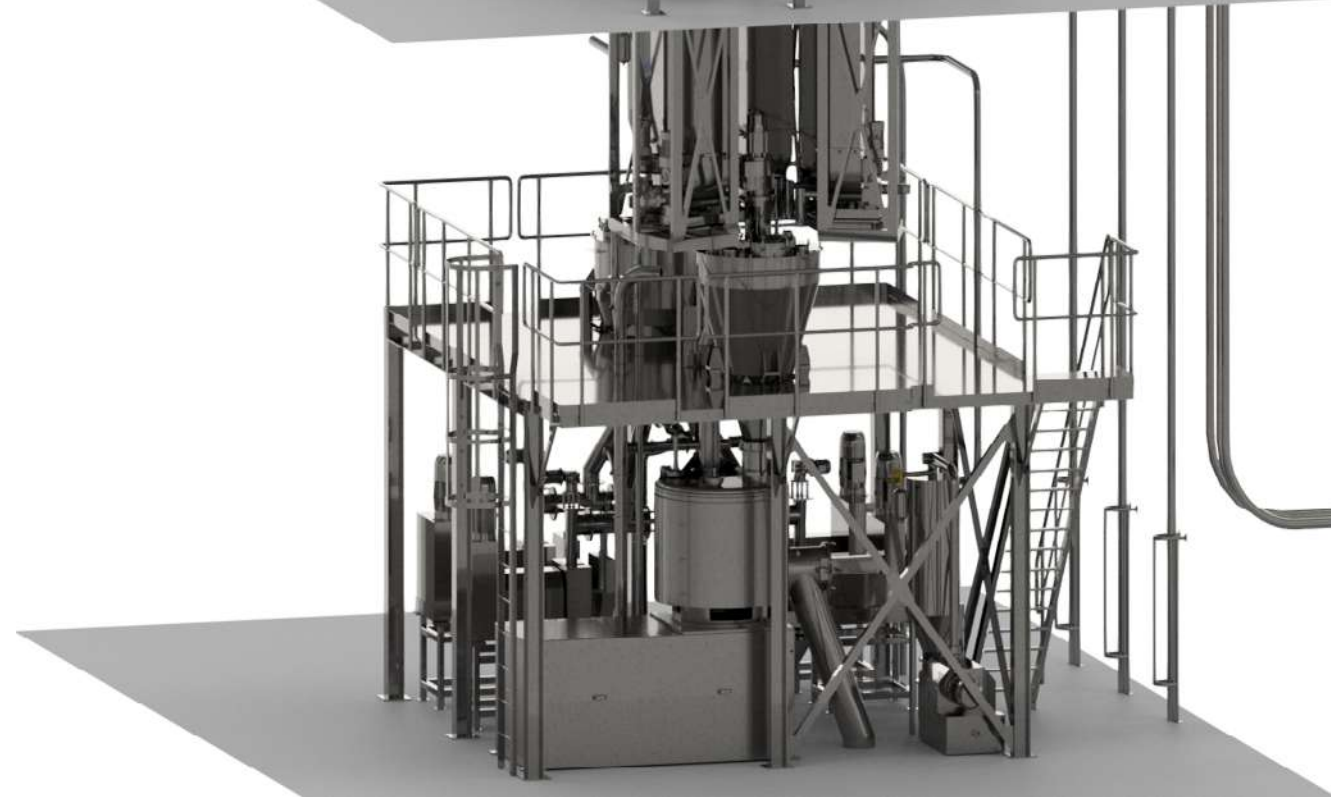
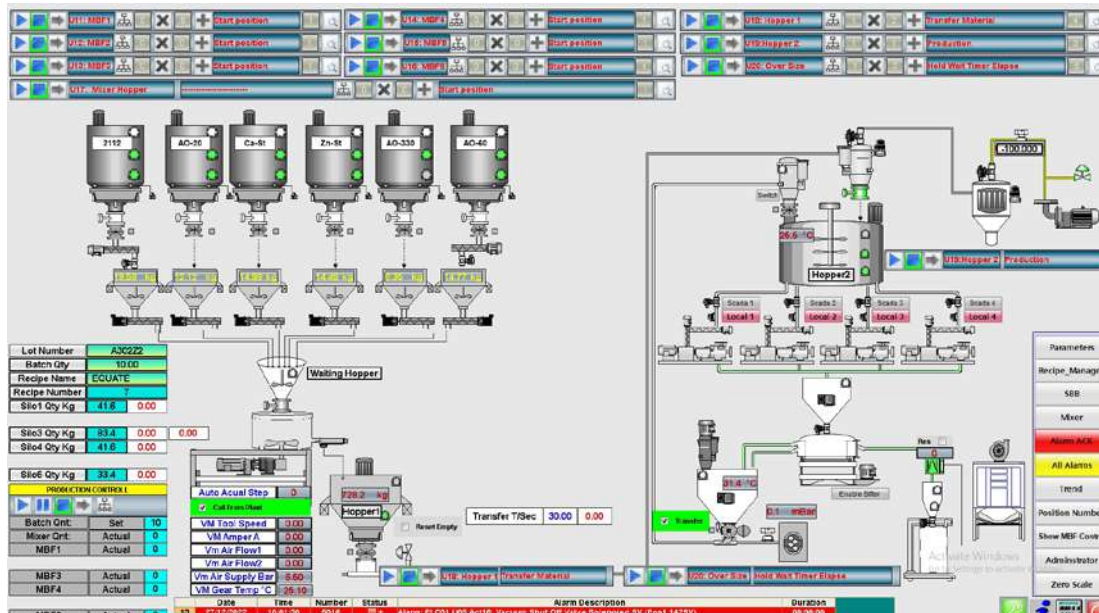




## Supervisory Control and Data Acquisition (SCADA)

Implementing SCADA (Supervisory Control and Data Acquisition) systems for real-time monitoring and control of industrial processes involves integrating hardware and software components that communicate data from sensors and control devices to a central system. This enables operators

to monitor conditions, receive alerts for anomalies, and make informed decisions based on real-time data visualization and analysis. Key components include Human-Machine Interfaces (HMI), communication infrastructure, data acquisition systems, and backend databases







KHIA8-40A,  
Al Taweelah - KIZAD A (Non-Free Zone),  
Abu Dhabi, UAE

P0 Box 2365,  
New Industrial Area,  
Street 66 Amman Road,  
Ajman, UAE

[www.etstengineering.com](http://www.etstengineering.com)

