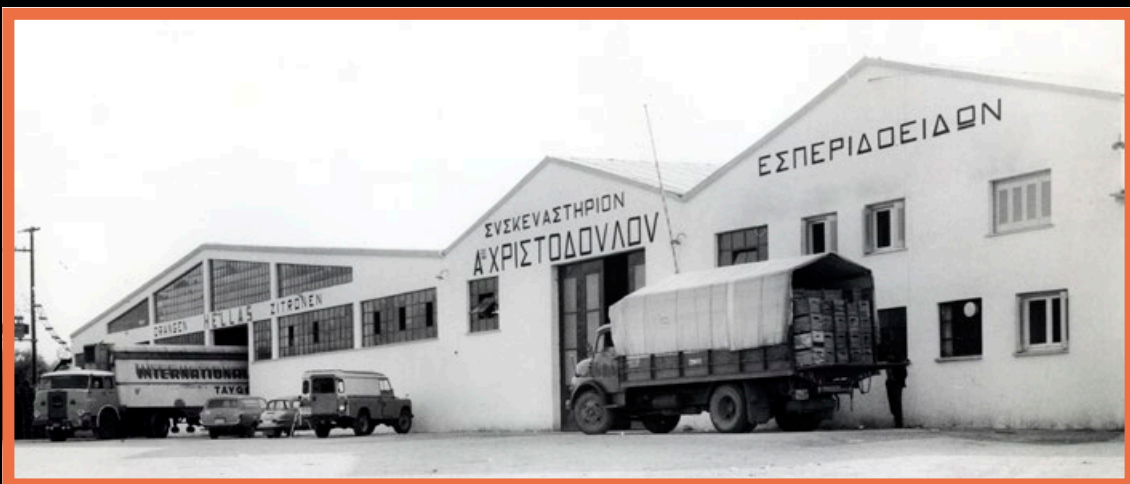


Your Greek Trusted
Canned Peaches Partner



VITOM S.A.

tastefull, handpicked clingstone peaches

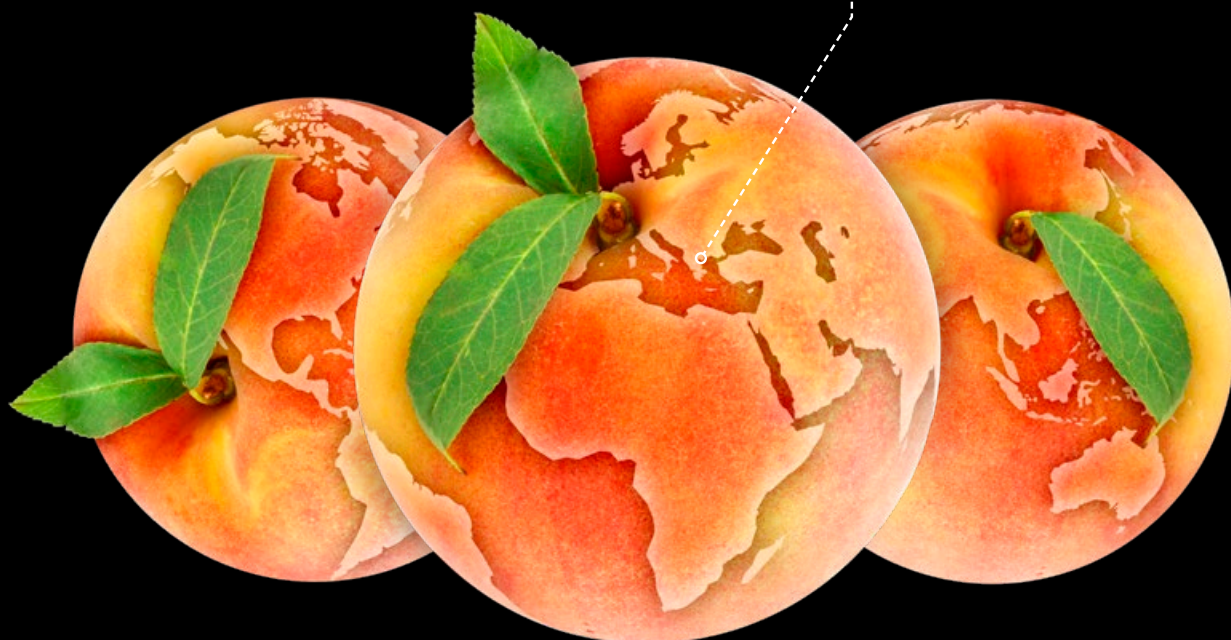


Our Story - Our Business

CHB Vitom S.A. was founded in 1955 and is a leading fruit processing company operating in Greece and exporting in more than 90 countries worldwide. Vitom factory is located in the heart of northern Greece at Koufalia region strategically situated in the peach growing area. Our production is consisted of a wide range of canned fruits with a distinct specialty in the yellow clingstone peach variety and fruit cocktail.

In the heart
of fruit cultivation!

GREECE
(Koufalia)



Fruits are
processed
and sealed
in less
than 24 hours
after harvest



Halves, Slices and Dices are packaged in standard or stackable tins, with the full range of quality options available for the customer we serve such market chains, wholesalers, importers, distributors and HO.RE.CA.

CHB Vitom at a glance

 **35.000** square meters

Our privately owned state-of-the-art plant is located in Macedonia Region, in the heart of the best stone fruit growing regions and it has the ability to process approximately 100.000 tonnes of fruit annually.

 **90+** export countries

Since 1955 we have been exporting fresh Greek fruits in Europe. Now we have expanded our horizons by exporting fruit products worldwide.

 **250+** clients

We amount more than 250 clients in 5 continents

 **3** cuts

• Canned peach slices / dices / halves

 **3** qualities

• Choice • Good standard • Standard

 **6** recipes

• Light • Extra light • Heavy syrup
• Extra heavy syrup • Water • Juice



Our Plant



Our state-of-the-art plant implements a unique 360° process with a daily 470mt capacity, which guarantees color, taste and hardness for every single unit.

The facility is fully covered with imported Bruchtal tiles, ensuring maximum cleanliness throughout the production lines and is fully digitized and able to measure every bit of detail during production.



Our Certificates



Our customer centric approach is based on the principles of safety and high quality by applying a strict control system within the quality production process. CHB Vitom is certified with the following certification bodies.



Our Productions Features



The highest

anti-microbiological standards



2 way automated

re-pitting process to minimize the defaults



Peeling

in less than a minute



Speed production

can be altered in order to decrease collisions of raw material and much more!



Maximum cleanness

of the production lines



8 minutes pasteurizing

procedure at 88°C for better consistency of the product



Our Innovation

Our engraved peaches are created using an innovative technique on the fruit surface. They are an ideal decoration for sweets and cakes and can be enjoyed neat as breakfast or snack.



QUALITY
CANNED
PEACHES

Packaging



425ml



825ml



A9

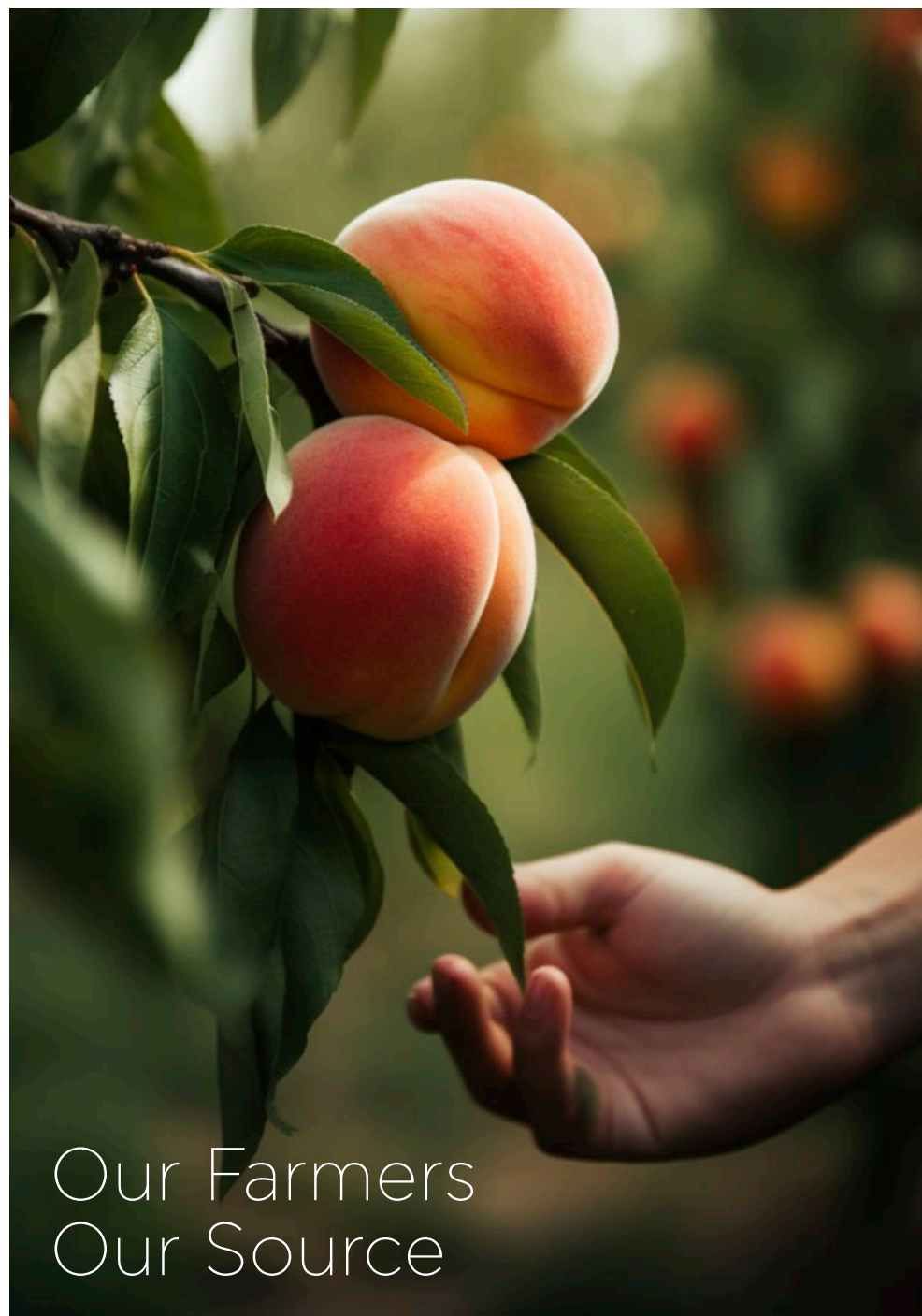


A10



A12

NET WEIGHT	DRAINED WEIGHT	AVAILABLE IN
425ml	240gr	6/12/24 tins per Carton
825ml	480gr	6/12/24 tins per Carton
A9 (2.650ml)	1.500gr	6 tins per Carton
A10 (3.150ml)	1.750gr	3/6 tins per Carton
A12 (4.250ml)	2.400gr	3/6 tins per Carton



Our Farmers Our Source

We support the proximity to primary agricultural production. We feel a special commitment to our partner who cultivates the land and provides us with best quality peaches.

For CHB Vitom sustainability begins long before the industrial processing of fruits as we bent over the values of respect and caring of fruitful lands, trusting our treasures to our committed, experienced farmers.



Our ESG Policy

We operate responsibly towards our commitment for sustainable development, environmental protection and support of the local community.

What we do for the environment



100% LIQUID WASTE MANAGEMENT

All liquid waste streams are led to the biological treatment plant of our production units.



100% RECYCLING OF WASTE

All waste materials from the production process such as paper, plastic, metals, wood and fruit residues, ink, toner cartridges and batteries are recycled.



2MW OF GREEN ENERGY

Solar panels on the roof of our production units produces 2MW of electricity, which accounts for 45% of our annual consumption.



-12% GREENHOUSE GAS EMISSIONS REDUCTION

We reduce the carbon cycle a complete study of our production process starting from cultivation and transport to the delivery of the final product.



3% OF WATER / ELECTRICITY CONSUMPTION

We are committed to reduce water and electricity consumption in our production units by 3% each year.

Working and safety conditions for employees

Compliance with laws and regulations



Current Sustainable Projects



Water management



Educational centre for farmers



Solar panels



Your Greek Trusted Partner
For High Nutritional
Canned Peaches



scan to watch
our farmers stories



VITOM S.A.

Commercial Office

32, Parnithos St. 145 64, Kifisia, Athens, Greece

T. +30 210 6836860, e. info@chb.gr

Koufalia Plant

3rd km. Koufalia - Prochoma, 571 00, Koufalia, Thessaloniki, Greece

T. +30 23910 52.352, F. +30 23910 52.353