

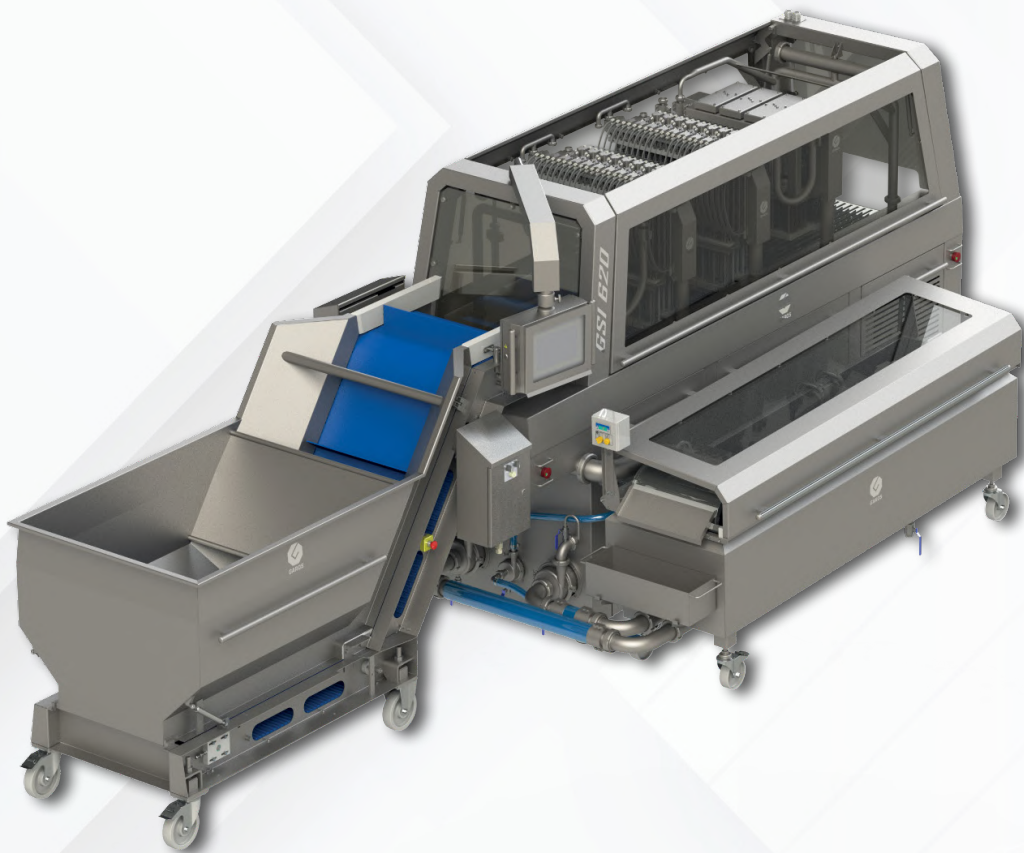


AUTOMATIC FEEDER

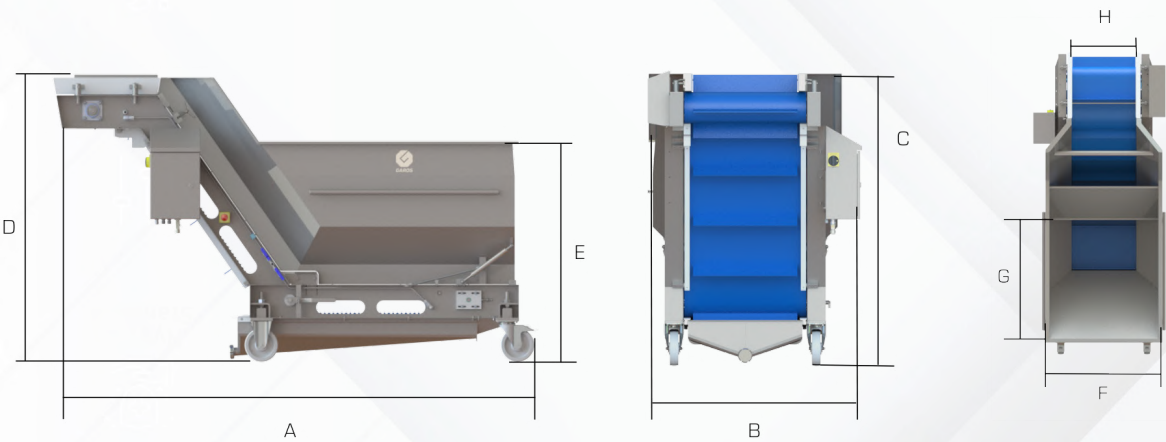


AUTOMATIC FEEDER

GAF is normally used in conjunction with the GAROS GSI Injectors, automatically delivering and dispensing products in a single layer on the injector's conveyor belt, at a capacity adjusted to match the injectors belt speed. The GAF feed hopper is designed to hold 800 kg of product, corresponding to a 800 litre Dolav type of tubs. The feeder is equipped with a collection tray for meat juice, which can optionally be pumped away or collected elsewhere.



- The conveyor speed is adapted to the injector speed.
- The GAF frame is equipped with wheels, making it effortless to move.
- Conveyor system is equipped with automatic cleaning nozzles.
- Gas springs for frame lifting.
- Machine design for full integration with GSI injectors.
- Cuts manual labor costs.



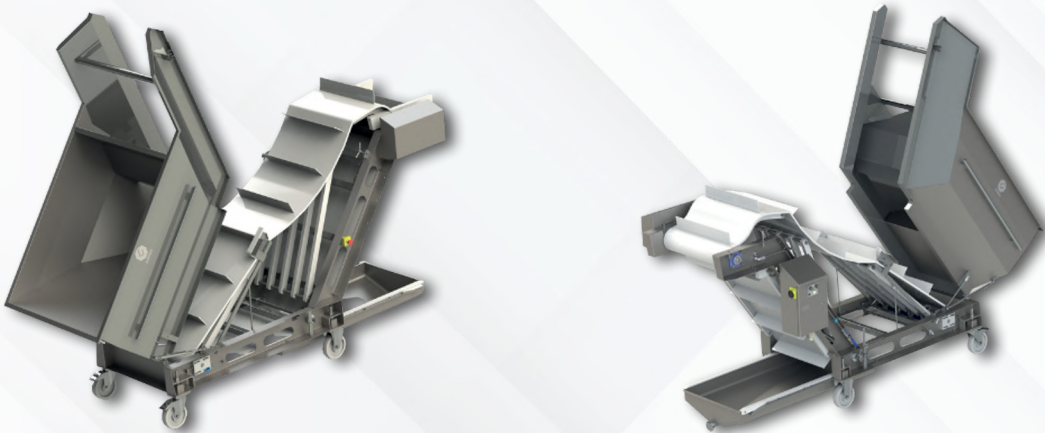
Measurements in mm	A	B	C	D	E	F	G	H
GAF 420	2820	1140	1700	1390	1315	1040	1160	420
GAF 620	2820	1270	1700	1390	1310	1040	1160	620

Application	Boneless products
Capacity	Corresponds with all GSI injector models
Electrical connection	3 / PE 400 V, 50 Hz
Power supply	0,37 kW

GAROS reserves the right to make technical modifications in measures or design at any time.

HYGENIC DESIGN

The design of the machine allows easy access to every part of the machine, making it easy to maintain at proper hygiene levels.





RED MEAT



POULTRY



FISH

AB Garos

Box 343
551 15 Jönköping
SWEDEN
+46 36 18 11 30
info@garos.se