

General Information

*Shibuya*



## *Carving out a bright new future with our world-leading technologies!*

For more than 80 years, SHIBUYA has continuously developed labor saving technology to improve and streamline bottling plants. As a result, SHIBUYA has grown to become a leading manufacturer of bottling systems. We have created a range of GMP standard aseptic filling lines, packaging and handling equipment, versatile carton forming and packaging systems, as well as distribution and conveying systems, all aimed at streamlining product handling. In an effort to preserve and protect life and the environment, we have also developed medical instrument and Regenerative Medical Systems. We consistently pursue and develop concepts that not only allow us to stay ahead in these rapidly changing times, but which also result in products of uncompromising reliability and quality. With our world-leading technologies, SHIBUYA continues to strive to create Dantotsu (superb) products and contribute to our society and our future.

### OUTLINE OF SHIBUYA

Founded: March, 1931

President: Hirotohi Shibuya

Capital: JPY11,392,010,000 (As of Oct. 2016)

Employees: 3,200 [SHIBUYA Group] (As of Oct. 2016)

Bank Reference: The Hokkoku Bank, Ltd. Head Office

The Norinchukin Bank Head Office

The Bank of Tokyo-Mitsubishi UFJ, Ltd. Kanazawa Branch

Mizuho Bank, Ltd. Toyama Branch

Sumitomo Mitsui Trust Bank, Ltd. Kanazawa-Chuo Branch

Main Products: Packaging Plants Div.

Automatic Bottling Systems

Automatic Packaging Systems

Pharmaceutical Manufacturing Systems

Regenerative Medicine Div.

Mechatronics Div.

Cutting Systems

Semiconductor Systems

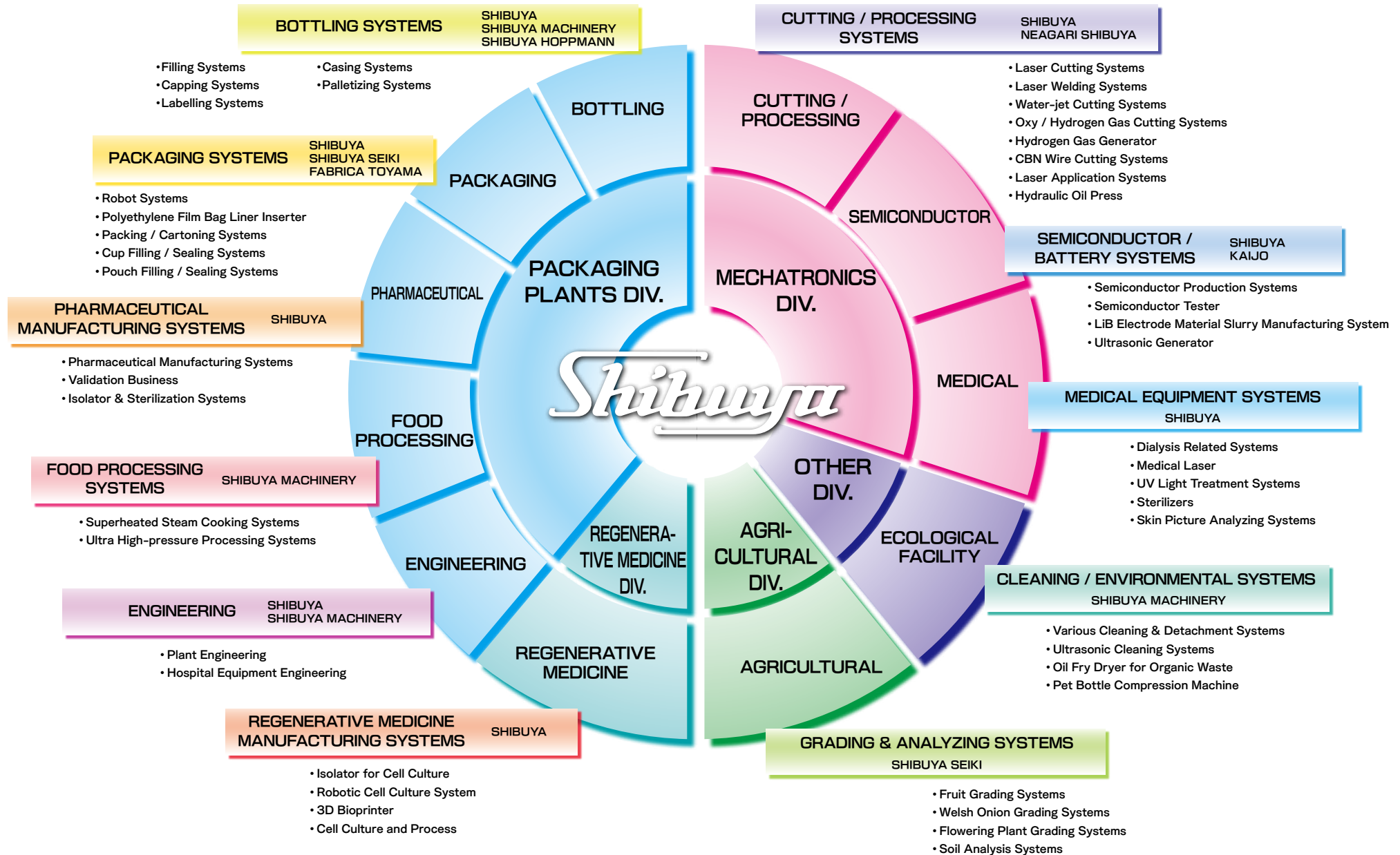
Medical Equipment Systems

Agricultural Div.

### HISTORY OF SHIBUYA

- 1931** Kashichi Shibuya founded Shibuya Shoten in Kanazawa
- 1949** Established Shibuya Kogyo Co., Ltd. with a capital of ¥1,500,000
- 1953** Opened the Mameda Factory at the site of our present Main Factory
- 1964** Increased the capital to ¥70,000,000 by investment from Nagoya Small and Medium Business Investment & Consultation Co., Ltd.
- 1965** Increased capital to ¥100,000,000
- 1972** Established Noto Kikai Co., Ltd. as a subsidiary company
- 1976** Kashichi Shibuya, founder and first president died
- 1978** Contract with GSI Lumonics Inc (Canada) for the sale of their laser marking device
- 1979** Contract with B & H Manufacturing Company, Inc. for the technology of their roll labeler
- 1982** Listed on the 2nd section of Nagoya stock exchange  
Increased the capital to ¥550,000,000
- 1985** Increased capital to ¥5,282,400,000  
Listed on the 2nd section of Tokyo stock exchanges
- 1986** Listed on the 1st sections of Tokyo and Nagoya stock exchange
- 1987** Contract with NIPRO Corporation for OEM of medical instrument.
- 1991** Contract with Akers Kennedy & Associates, Inc for the consultation of the validation service
- 1993** Established Shibuya Machinery Co., Ltd.
- 1995** Contract with Uhlmann Pac-Systeme GmbH & Co. KG for their tablet & capsule packaging systems  
Medical products section approved by international quality standard ISO9001
- 2000** Opened the RP system Morimoto factory at Kanazawa Techno Park
- 2003** S-I Seiko Co., Ltd. became a part of Shibuya group (current Shibuya Seiki Co., Ltd.)
- 2004** Established Shibuya E·D·I Co., Ltd.
- 2005** Hoppmann Corp. became a part of Shibuya group as Shibuya Hoppmann Corp.
- 2008** Established Shizuoka Shibuya Seiki Co., Ltd. (current Shibuya Seiki Co., Ltd.)
- 2009** Fabrica Toyama Corp. became a part of Shibuya group
- 2010** Opened the EB system Morimoto factory at Kanazawa Techno Park
- 2011** Opened the Medical Instrument factory at Wakamiya/Kanazawa
- 2012** Kaijo Corp. became a part of Shibuya group  
Neagari MFG. Co., Ltd. became a part of Shibuya group as Neagari Shibuya Co., Ltd.
- 2013** Began production on the new factory at Okinawa Advanced Machining Center Co., Ltd.
- 2014** Opened the RM system Morimoto factory at Kanazawa Techno Park
- 2016** Opened the Shibuya Advanced Cell Processing Factory at RM system Morimoto factory

# SHIBUYA's Expanding Our Global Range Through Our Spectrum of Technology and Innovation







## BOTTLING SYSTEMS

Bottling industries demand ever higher standards of quality, productivity, efficiency, and flexibility in their bottling and packaging systems. SHIBUYA's innovative high performance plants for handling various bottle shapes, liquids and packaging requirements are being more widely used for beverages such as wines, sodas, dairy, liquor, beer, foods such as sauces and dry ingredients and personal care/household items like detergents and soaps.

### ▲ ASEPTIC FILLING SYSTEM

#### ● DECAPPER

This machine removes retained used screw caps or crowns from bottle mouths of returnable bottles.

#### ● UNSCRAMBLER

This machine orients plastic bottles fed at random and sets them upright on a conveyor leading to downstream equipment.

#### ● BOTTLE WASHER

Soaking and high pressure jets completely wash the interior and exterior bottle surfaces. Various types are manufactured depending on bottle contamination conditions, bottle shapes and speeds.

#### ● AIR CLEANER

This machine cleans the bottles by injecting air after they are inverted.

#### ● ELECTRON BEAM BOTTLE STERILIZER

Electron beam energy is used to sterilize the inside and outside of bottles. It also provides a safe, economical, small footprint and environmentally friendly alternative for sterilization.

#### ● FILLER

This machine fills liquid products into bottles. There are a variety of filling methods, such as flow-meter, net weight, piston, or gravity filling, depending on liquid types.

#### ● CAPPER

This machine attaches closures onto bottle mouths. Various types such as PP capper, screw capper and crown are manufactured to meet closure styles.



▲ Unscrambler



▲ Rinsor



▲ Bottle Washer



▲ Air Cleaner



▲ Electron Beam Bottle Sterilizer



▲ Filler



▲ Filler



▲ PP Capper



▲ Screw Capper



▲ Roll Labeler



▲ Pasteurizer



▲ Foreign Matter Inspector



▲ Robot Type Caser



▲ Bottle Conveyor



▲ Bulk Bottle Depalletizer



▲ Paper Cup Filling / Sealing System



▲ Pouch Filling System

#### ● LABELER

Our labelers apply labels directly onto bottles. Sheet-Fed labelers use pre-cut labels that have been loaded into a magazine, while the Roll-Labeler uses labels on a roll.

#### ● BOTTLE INSPECTOR

This machine inspects the inside / outside of every bottle by using high accuracy camera.

#### ● PASTEURIZER • WARMER • COOLER

Liquid pasteurizing is accomplished in bottles using heat, while cooling is done sequentially using a warm or cold shower. Warmer and cooler are also available.

#### ● CASER • UNCASER

Casers load bottles into cases, while Uncasers remove empty bottles from cases.

#### ● BOTTLE CONVEYOR

Our bottle conveyors are designed to transport bottles in a production line. The conveyors are customized based on floor space, production speeds, etc.

#### ● PALLETIZER • DEPALLETIZER

Palletizers/depalletizers automatically load/unload corrugated cardboard onto/from a pallet. Bulk depalletizers automatically unload the empty bottle cases in bulk from a pallet.

#### ● CUP•PAPER CONTAINER FILLING / SEALING SYSTEM

This system is a series of processes such as cleaning, filling and feeding of aluminum lids then heat sealing them. Paper pack cap sealers are available to put a spout on individual paper packs.

#### ● POUCH FILLING SYSTEM

This system fills and caps such products as foods and beverages into pouch containers.





## PHARMACEUTICAL MANUFACTURING SYSTEMS

The manufacture of Pharmaceutical products such as sterile injectables requires strict quality control in order to achieve consistent quality, purity and sterility. SHIBUYA manufactures a range of Pharmaceutical filling and packaging equipment for ampoules, vials, syringes, tablets, capsules and transfusion solvent for falling drops pack based on our extensive experience of bottling systems.

◀ NESTED SYRINGE FILLING SYSTEM

### ● INJECTION MANUFACTURING SYSTEM

This system offers complete washing, dry sterilizing, filling, and sealing of ampoules, vials or syringes.

### ● HYDROGEN PEROXIDE VAPOR DECONTAMINATION SYSTEM

This system is used to decontaminate pharmaceutical materials, such as containers, using vaporized hydrogen peroxide in a sealed chamber isolator. SHIBUYA also manufactures isolators and equipment for performing tests and for the manufacture of pharmaceutical products under aseptic conditions.

### ● SOLID PHARMACEUTICAL PRODUCT FILLING SYSTEM

Solid pharmaceutical products are filled into bottles or blister packs. The PTP blister packaging systems form, fill and seal tablets or capsules into film packs.



▲ Vial Washing Machine



▲ Vial Powder Filling System



▲ Syringe Filling System



▲ Ampoule Filling / Sealing Machine



▲ Isolator for Filling System



▲ PTP Blister Packaging System



▲ Sterility Testing Isolator



▲ Isolator for Contaminant



▲ Vaporized Hydrogen Peroxide Decontamination System

## REGENERATIVE MEDICINE MANUFACTURING SYSTEMS

Regenerative medicine is an essential component for future medical treatments. Shibuya applies sterilization, filling, automation and isolator technologies to the regenerative medicine field. We manufacture a variety of cell culture and processing systems based on the customer's needs. In addition, Shibuya provides our own cell culture and processing services at our own facility.

CELL PROCESSING ROBOT SYSTEM "CellPROI" ▶



▲ Cell Processing Isolator "CPI"



▲ Cell Processing Isolator "CPI"



▲ Cell Processing Robot System "CellPROI"



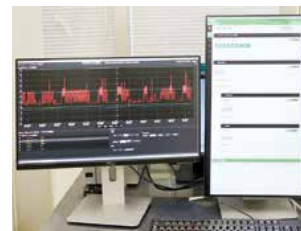
▲ Cell Processing Robot System "CellPROI"



▲ Incubator



▲ Incubator with Observation System



▲ Management System



▲ 3D Bioprinter

● **CELL PROCESSING ISOLATOR "CPI"**  
This isolator system enables cell culture processing in a compact space with a completely optimized aseptic environment, replacing traditional large scale cell processing centers.

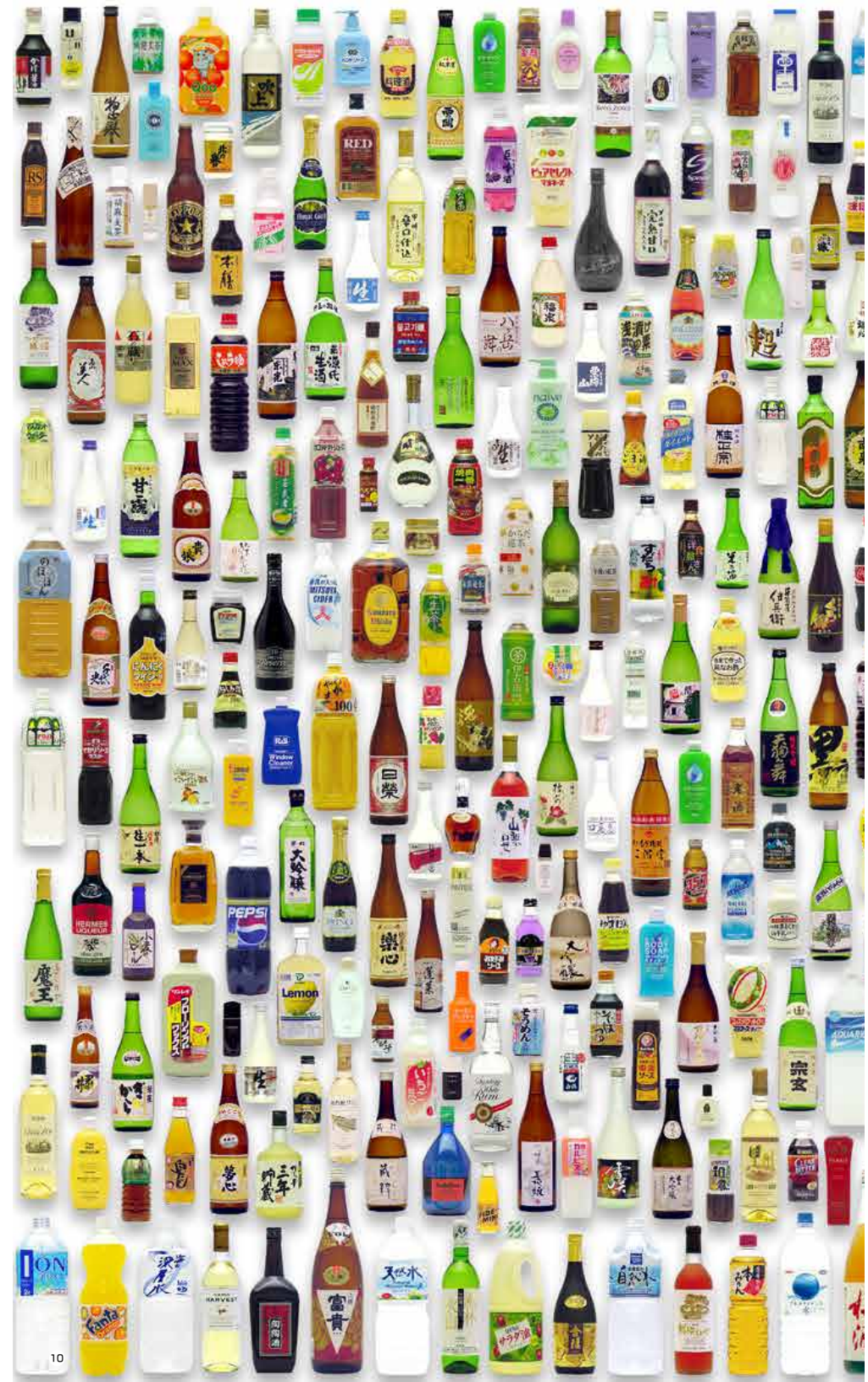
● **CELL PROCESSING ROBOT SYSTEM "CellPROI"**  
The system uses a dual arm robot and automatically processes cell culturing in an aseptic environment.

● **INCUBATOR**  
The incubator module when connected to the isolator, provides a stable environment for cell culture processing through monitored temperatures, humidity and other necessary factors.

● **INTEGRATED MANAGEMENT SYSTEM**  
The integrated management system provides comprehensive and effective management for cell culture such as Environment Control, Production/Operation Control, and SOP (Standard of Operating Procedures).

● **3D BIOPRINTER**  
The 3D Bioprinter layers cellular material on a specific array of needles to build three-dimensional cell cultures based on source materials.

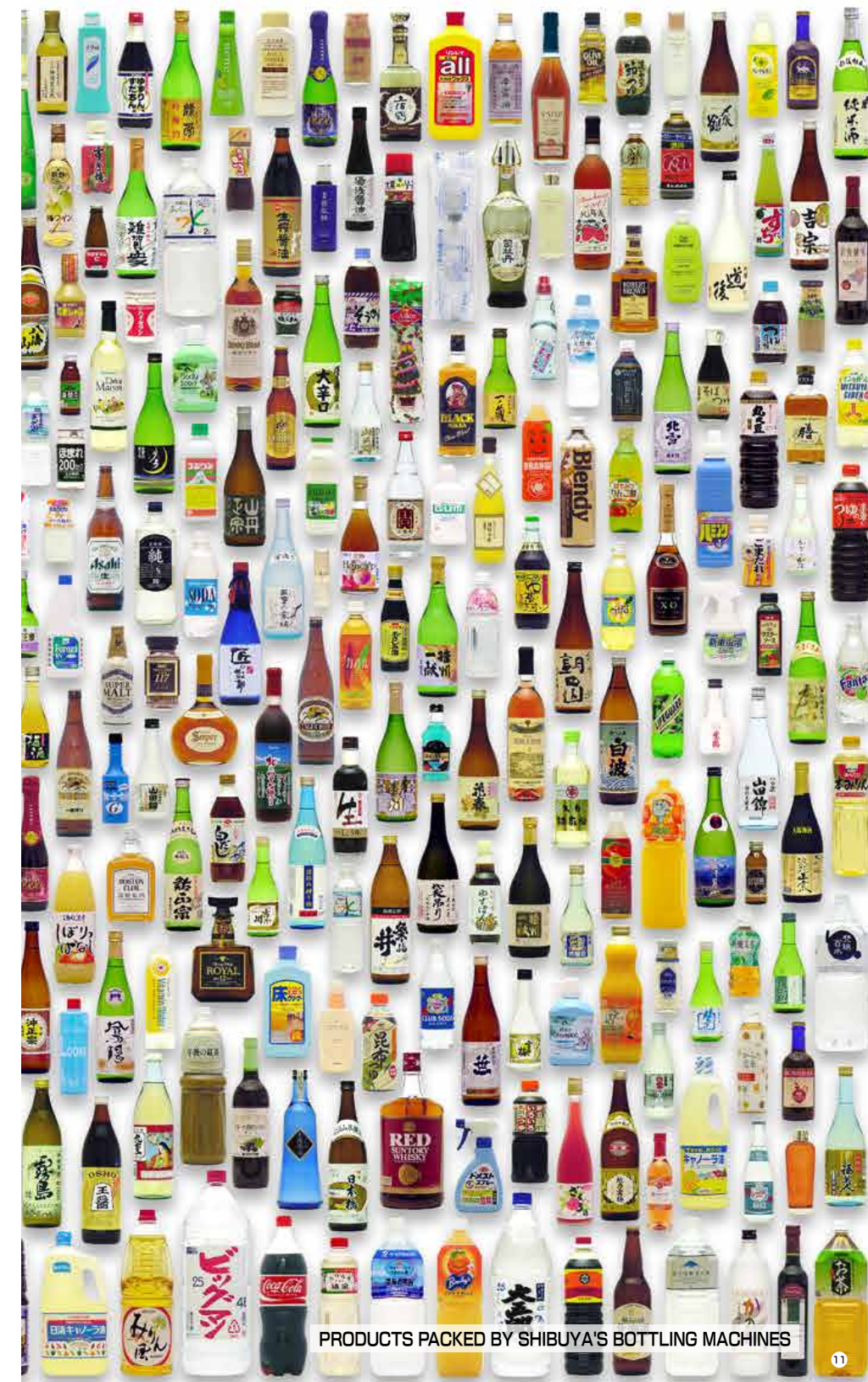












PRODUCTS PACKED BY SHIBUYA'S BOTTLING MACHINES







## PACKAGING SYSTEMS

Most commonly used products such as confections, retort packaged foods and daily necessities are packaged in different types of outer cases. SHIBUYA manufactures various types of cartoning and packaging systems to handle such products.

◀ WRAP-AROUND CASER

### ● WRAP-AROUND CASER

This machine groups products, such as bottles, cans, cartons, etc., in a predetermined configuration, and feeds them onto a flat corrugated sheet. The sheet is then folded and glued to form a case around the products.

### ● CARTONING MACHINE

This machine builds cartons from sheets coming from a magazine. Once the carton is created, it is filled with product and the flaps sealed.

### ● MULTI-PACKER

This machine groups products such as bottles, cans, etc. and wraps them with a blank sheet in sleeve form.

### ● CASING SYSTEM

The system packs different products in various ways. There are several types of Casing Systems: Robot Style, Mechanical-type, etc., dependent on the product and packaging materials.



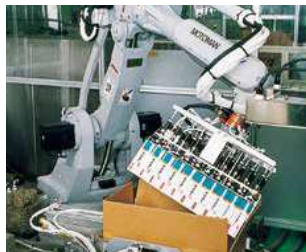
▲ Cartoning Machine



▲ Multi-Packer



▲ Robot Type Caser



▲ Robot Type Caser



▲ Robot Type Caser



▲ Caser for Pouch



▲ Caser for Sherbet



▲ Caser for Snacks

## FOOD PROCESSING SYSTEMS

SHIBUYA serves the food processing and R&D industries with our Food Processing and Cooking systems. One system cooks a variety of food products, such as fish, meat, or vegetables, using superheated steam; Another liquefies various ingredients with ultra-high pressure in a short period of time to form a variety of products.

▶ SUPER HEATED STEAM COOKING SYSTEM



▲ Super Heated Steam Cooking System



▲ Chicken Legs



▲ Cooking of Sweet Potatoes

### ● SUPER HEATED STEAM COOKING SYSTEM

The high temperature produced by superheated steam provides shortened cooking times and full control of the density of product browning. The picture shows a high speed continuous cooking system designed to cook products placed on a conveyor as they pass through the cooking zone of system.



▲ Ultra-high Pressure Processing System



▲ Sardines Before Processing



▲ Sardines After Processing

### ● ULTRA-HIGH PRESSURE PROCESSING SYSTEM

Meat and vegetables are liquefied using high pressure and heat at in a short time. This is used for a variety of applications, including to create seasonings and soups production, and will help retain food quality, maintains natural freshness, and extends microbiological shelf life.

## ENGINEERING

SHIBUYA designs our customer's plants after carefully considering their specified components and individual needs. Based on our experience and expertise in a wide variety of industries, SHIBUYA is able to deliver a total engineering package using equipment manufactured by the SHIBUYA Group.

▶ MICROBE/ANIMAL CELL CULTIVATION PLANT



▲ Pharmaceutical Production Plant



▲ Microbe/Animal Cell Cultivation Plant

### ● APPLICABLE ENGINEERING FIELDS

- Soft beverage production plant
- Food/seasoning production plant
- Liquor brewing plant
- Aseptic beverage production plant
- Pharmaceutical production plant
- Microbe/animal cell cultivation plant
- Packaging plant
- Environmental plant
- Cleaning systems
- Hospital facility





## CUTTING / PROCESSING SYSTEMS

Shibuya provides a wide variety of cutting, welding and laser machines and they are used in a variety of materials processing. These include the Laser Cutting machine, the YAG Laser Welder, Water-Jet Cutting machines, Water-Guided Laser and Hydraulic Oil presses. Shibuya has also developed a CO<sub>2</sub> laser oscillator and fiber laser oscillator, and is currently pursuing other laser technologies.

◀ CO<sub>2</sub> LASER CUTTING MACHINE

### ● CO<sub>2</sub> LASER CUTTING MACHINE

There are various types of CO<sub>2</sub> laser cutting machines available. The machines use laser beams which offer flexible cutting with high accuracy, in one, two or three dimensional cutting process

### ● FIBER LASER CUTTING MACHINE

This power-saving laser cutting machine allows for high-speed and high accuracy cutting, utilizing fiber cables for oscillating the laser beam.

### ● YAG LASER WELDING MACHINE

This YAG welder uses infrared laser beams oscillated and generated by use of YAG crystals. There are various types of YAG welder available for specific purposes.

### ● OXY / HYDROGEN GAS CUTTING SYSTEM

Cutting is achieved using hydrogen gas generated by water electrolysis. This is a low cost alternative and is environmentally friendly since the system uses a gas heat source.

### ● WATER-JET CUTTING MACHINE

Our water-jet cutting systems cut various materials using ultra-high water pressure. Abrasive mixed water jet design and a non-abrasive mixed hydro-jet design are available.

### ● LASER AIDED AQUA-JET MICRO-CUTTING SYSTEM

This complex cutting system was developed through a combination of Shibuya's laser technology and water-jet technology. Its cutting method avoids heat affection and spatter.

### ● HYDRAULIC OIL PRESS

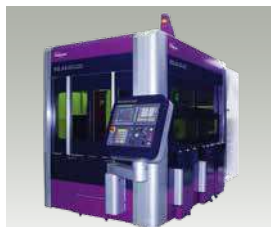
Various styles of hydraulic oil presses are available that form parts by using molds depending on the requirements (forging, deep drawing, or sheet metal, for example).



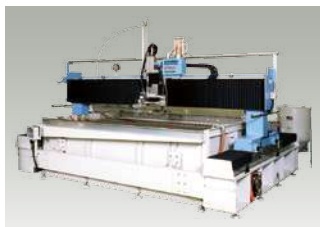
▲ Plane CO<sub>2</sub> Laser Cutting Machine



▲ Ultraprecision CO<sub>2</sub> Laser Cutting Machine



▲ Fiber Laser Cutting Machine



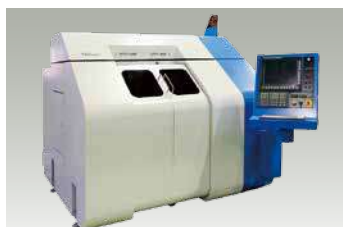
▲ Water-Jet Cutting Machine



▲ Oxy / Hydrogen Gas Cutting System



▲ YAG Laser Welding Machine



▲ Laser Aided Aqua-Jet Micro-Cutting System



▲ Forging Hydraulic Oil Press

## SEMICONDUCTOR / BATTERY SYSTEMS

SHIBUYA's high precision machinery for semiconductors is widely used for the automated testing, handling and taping of IC chips and LED's. Our range of machines include solder ball mounters, various types of bonders, and water-jet deburring systems. We also produce lithium ion battery electrode material slurring system which makes slurry for LiB material.



BGA SOLDER BALL MOUTER ▶



▲ Solder Ball Mouter for Wafer



▲ Solder Ball Mouter for Mass Production



▲ Flip Chip Bonder for Mass Production



▲ Flip Chip Bonder for Small-Lot Production/Development



▲ Die Bonder



▲ Wire Bonder



▲ Test Handler



▲ Taping Machine



▲ LiB Electrode Material Slurry Manufacturing Pilot Plant

### ● BGA SOLDER BALL MOUNTER

This high capacity machine is designed to place solder balls on CSP/BGA substrates or wafers.

### ● FLIP CHIP BONDER

This machine provides high accuracy gang bonding of IC chips to substrates with a choice of bonding methods.

### ● DIE BONDER

It is a device that bonds the die and substrate separated from the wafer.

### ● WIRE BONDER

Wire bonder connects semiconductor tip and substrate using narrow wire.

### ● TEST HANDLER

This High-Speed Test Handler performs electrical/optical inspections of devices such as LED chips and sorts them according to the results.

### ● TAPING MACHINE

This machine loads transistors, diodes etc. into an embossed tape and then applies and seals a cover tape over the devices.

### ● LiB ELECTRODE MATERIAL SLURRY MANUFACTURING SYSTEM

This slurring system continuously converts raw materials used for the electrode of lithium ion battery into slurry form with high quality and high speed.





## MEDICAL EQUIPMENT SYSTEMS

SHIBUYA has been an active contributor to the rapidly advancing medical field with Dialysis systems, medical laser systems, UV light treatment systems, skin picture analyzing systems, blood test pre-treatment systems, and more.

### ◀ UV LIGHT TREATMENT SYSTEM

#### ● DIALYSIS SYSTEM

This system achieves pure water production, dialysate supply and dialysate flow monitoring when dialyzing renal insufficient patients.

#### ● MEDICAL LASER SYSTEM

Shibuya produces a variety of Medical Laser systems for applications such as surgical or orthopedic treatments.

#### ● UV LIGHT TREATMENT SYSTEM

This handy irradiation type equipment targets and focuses on a small skin disease area and cure it using narrow band UVB.

#### ● SKIN PICTURE ANALYZING SYSTEM

This system takes high precision pictures on the whole face of a person and analyzes its skin conditions.



▲ Single Patient Dialysis Unit



▲ Monitoring System for Dialysis System



▲ Powder Dissolver



▲ Dialysis Fluid Supply System for Multiple Patients



▲ Laser System for Dermatological Treatment



▲ Carbon Dioxide Gas Laser Operation System



▲ Pulsed Holmium, YAG Laser



▲ UV Light Treatment System



▲ Skin Picture Analyzing System

## CLEANING / ENVIRONMENTAL SYSTEMS

SHIBUYA has several different cleaning system that can be used for various applications. Our systems are designed keeping in mind efficiency and our abilities in contributing to a cleaner environment. Some of our systems can be run in fully-automatic or semi-automatic mode, depending upon the application.

### PALLET CLEANING SYSTEM ▶



▲ Case Cleaning System



▲ Cleaning System for 1t Container



▲ PET Bottle Compacting Machine



▲ Cleaning System for Railway Vehicles Parts

#### ● VARIOUS CLEANING SYSTEMS

Shibuya uses a variety of cleaning methods, such as the mixed air jet type, and produces cleaning systems which correspond to various fields. We also produce a cleaning machine that uses hand gun for the application of cleaning liquids.

#### ● PET BOTTLE COMPACTING MACHINE

This machine compacts used PET bottles which are then collated and bound with PP bands in preestablished quantities.

## GRADING & ANALYZING SYSTEMS

This system is designed to automate the grading and sizing of farm products before delivery. The application is not only for fruits, such as oranges, peaches, and persimmons, but also for vegetables, such as welsh onions and carrots. This system contributes lower cost operations and lower environmental impact.

### CITRUS FRUITS GRADING SYSTEM ▶



▲ Pre-treatment of White Welsh Onion & Grading System



▲ Apple Grading system



▲ Carrot Grading System



▲ Soil Analysis System

#### ● CITRUS FRUITS GRADING SYSTEM

Reliable performance can be achieved by various checks on the product, such as size, color, sugar content, acid content, and other internal qualities including rind puffing.

#### ● PRE-TREATMENT OF WHITE WELSH ONION & GRADING SYSTEM

This system cuts off the roots of white welsh onions roots and the bulbs are peeled as a pre-treatment. The onions are then sorted out by the vision inspection and weighing.

#### ● SOIL ANALYSIS SYSTEM

This is the world's first automatic system that can measure nutrient distribution in fields using the sensor loaded in the tractor.



## BUSINESS & PRODUCTION BASE

### HEAD OFFICE

ADD. Ko-58, Mameda-honmachi, Kanazawa 920-8681  
URL <http://www.shibuya.co.jp/>

### PLANT SALES DEPT. HEAD OFFICE

TEL 076-262-1202 FAX 076-223-1795

### INTERNATIONAL PLANT SALES DIV.

TEL 076-262-1615 FAX 076-223-1795

### REGENERATIVE MEDICINE MANUFACTURING SYSTEMS DIV. SALES DEPT.

TEL 076-262-1202 FAX 076-223-1795



### MECHATRONICS DIVISION

ADD. 2-232, Wakamiya, Kanazawa 920-0054

### SPECIALIZED MACHINE SALES DEPT.

TEL 076-262-2216 FAX 076-262-2210

### SCS SALES DEPT.

TEL 076-262-2201 FAX 076-262-2210

### LED SALES DEPT.

TEL 076-262-1200 FAX 076-262-2210

### SILAS SALES DEPT. HEAD OFFICE

TEL 076-263-8111 FAX 076-233-2210



### RP SYSTEM MORIMOTO FACTORY

### RM SYSTEM MORIMOTO FACTORY

ADD. 2-1, Hokuyodai, Kanazawa 920-0177  
RP FACTORY TEL 076-257-8901 FAX 076-257-8900  
RM FACTORY TEL 076-257-8915 FAX 076-257-8919



### EB SYSTEM MORIMOTO FACTORY

ADD. 2-7, Hokuyodai, Kanazawa 920-0177  
TEL 076-257-6821 FAX 076-257-6831



### MEDICAL EQUIPMENT WAKAMIYA FACTORY

ADD. 2-72, Wakamiya, Kanazawa 920-0054  
TEL 076-262-2208 FAX 076-262-2217



### TOKYO OFFICE

ADD. 1-20-4, Nishi-Ochiai, Shinjuku-ku, Tokyo 161-0031  
PLANT SALES TEL 03-3950-2112 FAX 03-3950-2115  
SILAS SALES TEL 03-3950-2111 FAX 03-3950-2120



### KANSAI OFFICE

ADD. 10-6, Kubo-cho, Nishinomiya, Hyogo 662-0927  
PLANT SALES TEL 0798-33-4131 FAX 0798-33-4928  
SILAS SALES TEL 0798-34-1121 FAX 0798-34-5539



### EAST JAPAN CS CENTER

ADD. 2-1, Kensaki-cho, Takasaki, Gunma 370-0883  
TEL 027-343-4111 FAX 027-343-4117



## SHIBUYA GROUP COMPANIES

### SHIBUYA MACHINERY CO., LTD.

ADD. 4-13-5 Kitayasu, Kanazawa 920-0022

TEL 076-233-8111 FAX 076-233-8114

URL <http://www.shibuya-smc.co.jp/>

CAPITAL JPY450,000,000

### MAIN BUSINESS

Manufacturing and Sales of Automatic Bottling Systems,  
Food Processing Systems, Product Handling Systems,  
Cleaning Systems, Environmental Systems,  
Brewing Machineries, Stainless Steel Parts,  
Various Combinations of Manufacturing Plants and Custom  
Designed set-up to Suit Space Limitations

### SHIBUYA SEIKI CO., LTD.

#### HAMAMATSU HEAD OFFICE

ADD. 630 Sasagase, Higashi-ku, Hamamatsu 435-0042  
TEL 053-421-1213 FAX 053-464-2401

#### MATSUYAMA HEAD OFFICE

ADD. 2200 Minamiyoshida, Matsuyama 791-8042  
TEL 089-971-4013 FAX 089-971-4067

URL <http://www.shibuya-sss.co.jp/>

CAPITAL JPY450,000,000

### MAIN BUSINESS

Manufacturing and Sales of Grading & Sizing systems,  
Agricultural Equipment, Automatic Packaging Systems,  
Cargo Handling Equipment,  
Agricultural and Industrial Robotics Devices and Vision systems

### FABRICA TOYAMA CORP.

ADD. 2, Kawarachi-machi, Kanazawa 920-0172

TEL 076-256-5500 FAX 076-256-5510

URL <http://www.shibuya-ftc.co.jp/>

CAPITAL ¥450,000,000

### MAIN BUSINESS

Manufacturing and Sales of Automatic and Laborsaving  
Machines mainly Packaging Machines

### SHIBUYA E·D·I CO., LTD.

ADD. Ko-58, Mameda-honmachi, Kanazawa 920-8681

TEL 076-262-4145 FAX 076-262-4148

URL <http://www.shibuya-edi.co.jp/>

CAPITAL JPY30,000,000

### MAIN BUSINESS

Temporary Staffing, Travel Agency, Education/Training,  
Drafting technical documents and translation,  
Wakes and Weddings Agent

### NEAGARI SHIBUYA CO., LTD.

ADD. 1-52-2, Yoshiharagomaya-machi, Nomi, Ishikawa 929-0121

TEL 0761-55-0610 FAX 0761-55-0516

URL <http://www.neagari.co.jp/>

CAPITAL JPY97,500,000

### MAIN BUSINESS

Manufacturing and Sales of Oil Hydraulic Presses,  
Liquid crystal manufacturing machine, Grinding Machines for  
computer hard disc.

### OKINAWA ADVANCED MACHINING CENTER CO., LTD.

ADD. 5192-7, Katsurenhaebaru, Uruma, Okinawa 904-2311

TEL 098-921-1001 FAX 098-921-2300

URL <http://www.shibuya.co.jp/oamc/>

CAPITAL JPY200,000,000

### MAIN BUSINESS

Assembly of Shibuya Group's Products and Manufacturing  
Mechanical Parts for Precision Machinery

### KAIJO CORP.

ADD. 3-1-5, Sakae-cho, Hamura, Tokyo 205-8607

TEL 042-555-2244 FAX 042-555-7176

CAPITAL JPY90,000,000

URL <http://www.kaijo.co.jp/>

### MAIN BUSINESS

Manufacturing and Sales of Semiconductor Production System,  
Ultrasonic Generator

### SUBSIDIARY COMPANY

KAIJO SEMICONDUCTOR TECHNOLOGY (SHANGHAI) CO., LTD.

TAIWAN KAIJO SHIBUYA CORPORATION

KAIJO SHIBUYA AMERICA INC.

### SHIBUYA SHANGHAI INC.

ADD. Room 108, Building D, No.1733, Lianhua Road, Minhang District,  
Shanghai China, 201103

TEL 86-21-6467-8188 FAX 86-21-6467-8288

CAPITAL USD1,600,000

### MAIN BUSINESS

Sales and Maintenance for Shibuya Group's Products

### SHIBUYA KAIJO (THAILAND) CO., LTD.

ADD. 43, Thai C.C. Tower, 11th Floor, Room No.112, South Sathorn Road,  
Kwaeng Yannawa, Khet Sathorn, Bangkok Thailand 10120

TEL 66-2-673-9496 FAX 66-2-673-9499

CAPITAL THB3,000,000

### MAIN BUSINESS

Service and Maintenance for Packaging Systems and Sales of  
Spare Parts

### SHIBUYA HOPPMANN CORP.

ADD. 7849 Coppermine Drive, Manassas, Virginia 20109 U.S.A.  
TEL 1-540-829-2564 FAX 1-540-829-1726

URL <http://www.shibuyahopmann.com/>

CAPITAL USD7,495,000

### MAIN BUSINESS

Manufacturing and Sales of Feeders (Unscramblers), Labelers,  
and Assembly Packaging Machinery





## **SHIBUYA CORPORATION**

**INTERNATIONAL MARKETING DIV.**

Mameda-honmachi, Kanazawa 920-8681, JAPAN

TEL 076-262-1200 FAX 076-223-1921

URL <http://www.shibuya.co.jp/>