

# GECITECH

HOSES & FITTINGS



Food



Pharmaceuticals



Cosmetics



Biotechnology



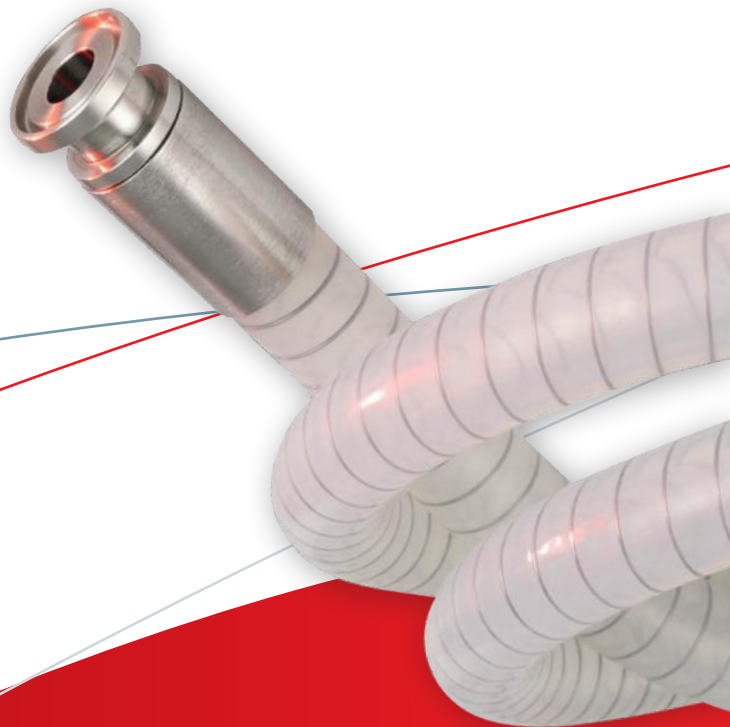
Chemistry

Innovative  
flexibility

# SILICONE HOSES

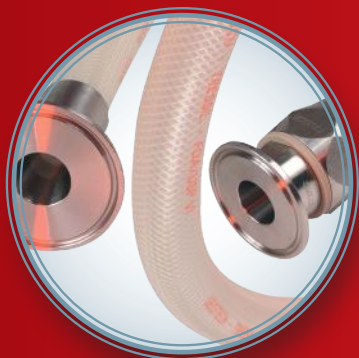
- Pharmaceutical, food, biotechnology applications
- High flexibility
- Steam sterilization / autoclave, CIP cleaning
- Compliance with FDA, USP Class VI, BfR, 3A

**PLATINUM  
CURED**



## **GSI 75 NT/NTP®**

Smooth silicone tube, white or translucent.  
Textile and embedded stainless steel  
wires reinforcement. White or translucent  
silicone cover.



## **TRESSIL®**

Translucent silicone tube.  
Embedded textile reinforcement.  
Silicone cover.



## **SPIRSIL®**

Translucent silicone tube.  
Embedded stainless steel wires  
reinforcement. Translucent  
silicone cover.



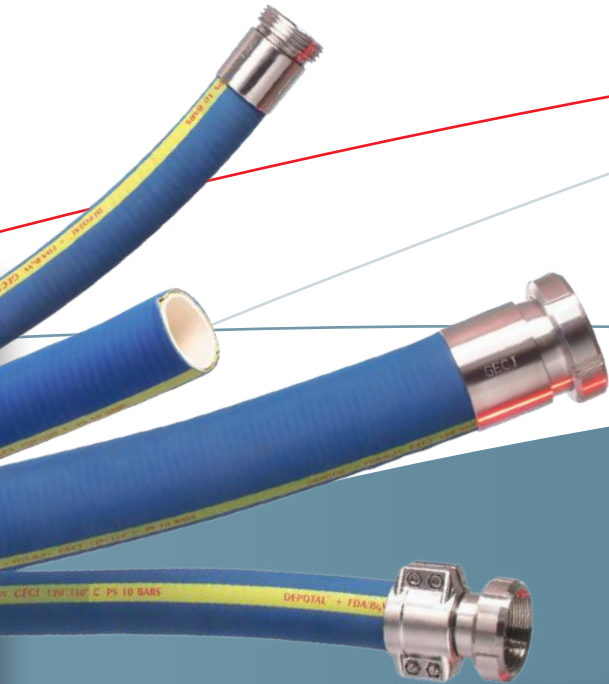
## **SILICONE TUBE**

Extruded silicone tube.



# ELASTOMER HOSES

- Food and cosmetic applications ■
- Alcohols, Fatty substances ■
- Steam sterilization, CIP cleaning ■
- Compatible with metal detectors\* ■



**NR**



\* Vaprocess® and Maxifood®

## DEPOTAL DOCK®

Food grade quality white smooth NR tube.  
Synthetic textile with embedded steel helix reinforcement  
Smooth blue natural rubber cover.

**EPDM**



## DEPOTAL®

Food quality white EPDM tube.  
Textiles plies and embedded  
galvanized steel wires reinforcement.  
Blue EPDM cover.

## VAPROCESS®

Food quality white EPDM tube.  
High resistance synthetic plies  
reinforcement. Micro perforated blue  
EPDM cover.

**EPDM**



## MAXIFOOD®

Food quality white EPDM tube.  
High resistance synthetic plies  
reinforcement. Smooth grey synthetic  
rubber cover.

**BUTYL**



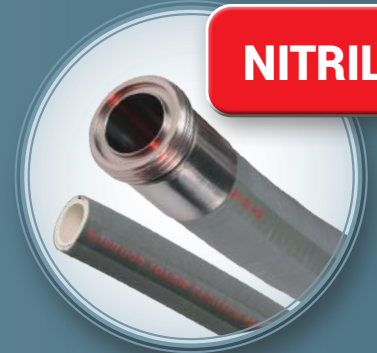
## BLUTECH®

Light butyl (BIIR) tube. Embedded  
textile plies and galvanized steel  
wires reinforcement. Blue butyl cover.

## VTA®

Smooth white butyl tube.  
Embedded steel braid reinforcement.  
Microperforated grey butyl cover.

**NITRILE**

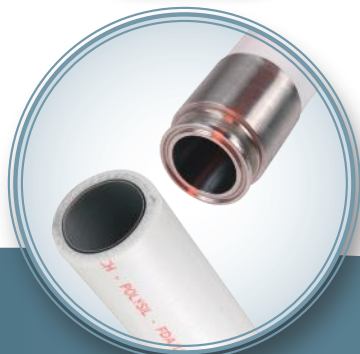


## NITRIFOOD®

White nitrile tube (NBR).  
Embedded textile plies  
and galvanized steel wires  
reinforcement. Light grey  
chloroprene cover.

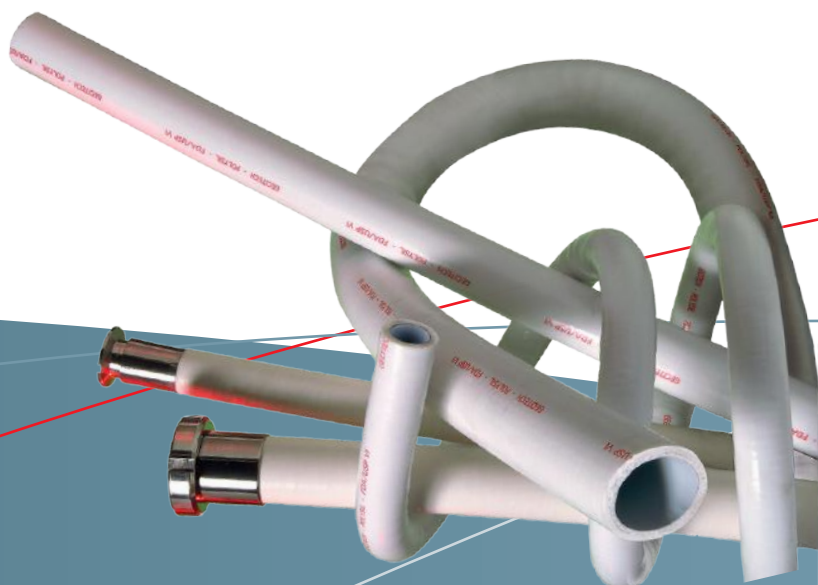
# THERMOPLASTIC HOSES

## PFA

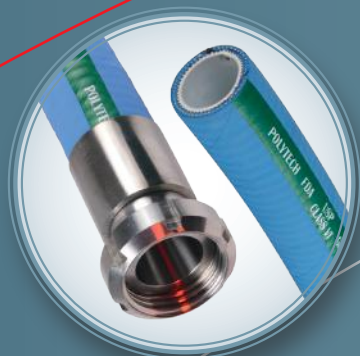


### POLYSIL®

Ultra smooth, inert and non-adhesive PFA fluoropolymer tube. Textile plies and embedded stainless steel wire reinforcement. White silicone cover.



## UPE



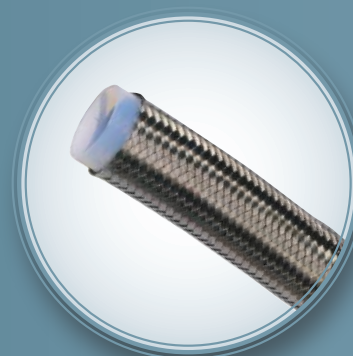
### POLYTECH®

Ultra smooth, inert and non-adhesive PFA tube. Textile plies and embedded galvanized steel wires reinforcement. Blue EPDM cover.



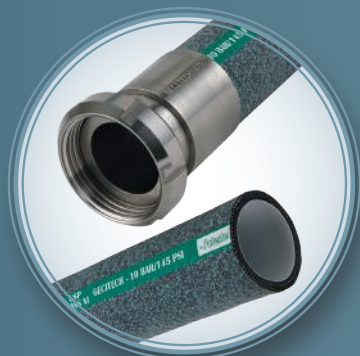
### FLEXAL®

Smooth transparent UPE tube. High resistant textile plies and embedded galvanized steel wires reinforcement. Smooth blue NR polymer cover.



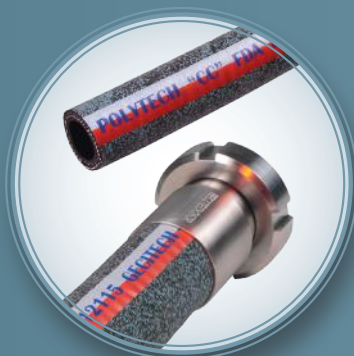
### SMOOTH PTFE

Smooth PTFE tube, covered with a 304L stainless steel braid.



### POLYTECH® CP

Ultra smooth, inert and non-adhesive PFA tube. Textile plies and embedded galvanized steel wires reinforcement. Antistatic EPDM cover, marbled finish green / black.



### POLYTECH® CC

Ultra smooth, inert and non-adhesive antistatic PFA tube. Textile plies and embedded galvanized steel wires reinforcement. Antistatic EPDM cover, marbled finish blue / black.



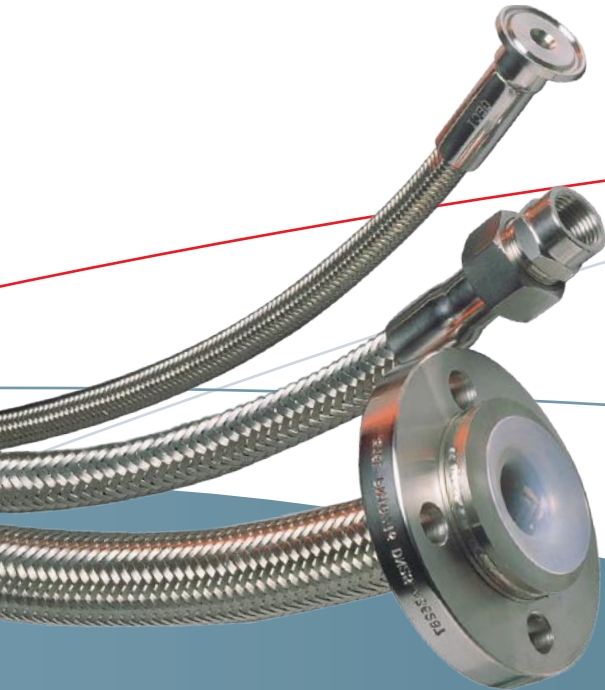
## MFA

### VIEWLINE®

Translucent MFA fluoropolymer tube. Can be reinforced with an external stainless steel guard according to the ratio pressure / temperature.

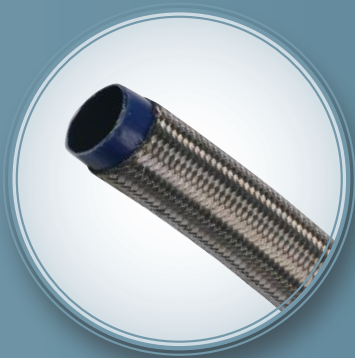


- Food, pharmaceutical, cosmetic and biotechnology applications



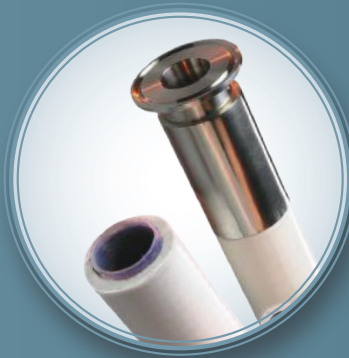
- Wide chemical compatibility
- Transfer of aggressive products
- ATEX versions

**PTFE**



#### **SMOOTH PTFE CARBON-LOADED**

Smooth carbon-loaded PTFE tube, covered with a 304L stainless steel braid.



#### **SILFLON®**

Smooth PTFE tube, covered with a stainless steel braid. Textile plies and stainless steel wires reinforcement. White silicone cover.



#### **SILFLON SC/SCA®**

Smooth PTFE tube, covered with a stainless steel braid. White silicone cover. Very high flexibility. The PTFE can be virgin or carbon loaded. Available in antistatic version.



#### **CONVOLUTED PTFE CARBON-LOADED**

Convoluted carbon-loaded PTFE tube, covered with a 304L stainless steel braid.



#### **CONVOLUTED PTFE**

Convoluted PTFE tube, covered with a 304L stainless steel braid.



#### **PTFE THP+**

Heavy wall smooth PTFE tube, antistatic or not, covered with two aramid braids and a high tensile 304L stainless steel braid.

# CORRUGATED HOSES

- High security under extreme working conditions
- Resistance to high pressure and temperature
- High tightness



## **PARRAP®, PARNOR®, PARMECA®, PARADE®**

Corrugated stainless steel tube, mechanically formed or hydroformed, covered with a 304L stainless steel braid.

# OTHER PRODUCTS



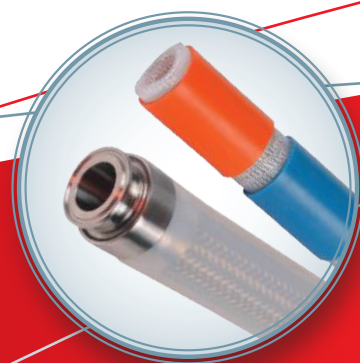
## **DOUBLE SLEEVE HOSE**

To maintain temperature.



## **HEATED HOSE WITH ELECTRONIC CONTROLLER**

To maintain temperature.



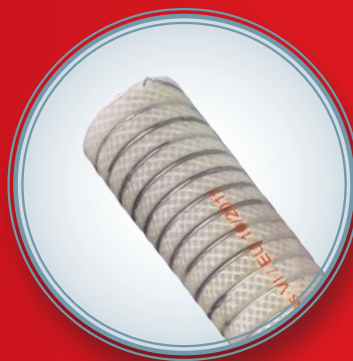
## **SILICONE SLEEVE / COLOR IDENTIFICATION**

External protection.



## **GECIFLEX® PU/AL**

Translucent polyurethane polyester tube. Stainless steel wire reinforcement. Available in antistatic ATEX version (GECIFLEX® PU/AL/EX).



## **GECIFLEX® TPU**

Smooth transparent technopolymer tube. High resistant synthetic plies and AISI 302 stainless steel wires reinforcement. Smooth transparent technopolymer cover. Available in antistatic ATEX version (GECIFLEX® TPU/AS).

# TRACEABILITY by GECITECH

## Traceability of your equipment software and maintenance assistance tool

- Adapted to any type of equipment (hoses, pumps, valves...)
- Identification by RFID chips, Data Matrix, QR Code labels
- Operations scheduling with deadline alert system
- History of the events
- Can be interfaced with a CAMM (according to feasibility)



## FITTINGS AND ASSEMBLING CONCEPTS



316L stainless steel fittings manufacturing:  
SMS, DIN, CLAMP, RJT, ISS, FIL, GAZ, NTP, JIC,  
FLANGES, BEVEL SEAT, etc.



### NRS® (Non Retention System)

Swaged, aseptic without retention

Clean in place (CIP), Standard internal roughness < 0.8 µ, External polishing, 3A validation.



### MSP®

Reusable, assembly and disassembly on site,  
no equipment required

For GSI® hoses. Aseptic without retention zone,  
Clean in place (CIP), Autoclavable, 3A validation.



### VNRS®

Reusable, illimited assemblies and disassemblies

For Tressil® hoses. Aseptic without retention zone,  
Clean in place (CIP), Autoclavable, 3A validation.



### FERRULES

Reusable, quick and easy to assembly for  
immediate breakdown assistance

Clean in place (CIP).



# Innovative flexibility

## » Designer and French manufacturer since 1986

Created in 1986, GECITECH has developed a unique know-how in designing and manufacturing flexible hoses and stainless steel fittings for the food, pharmaceutical, chemical, cosmetic and biotechnology industries.

Thanks to its strong experience and a policy focused on customers' satisfaction and innovation, GECITECH now occupies a leading position on the global market place.

## » Expertise and innovation

Staffed with highly qualified engineers, the R&D department operates upstream of the production to guarantee the good fit between the specific needs and the given solutions.

- Help for drawing up the specifications ;
- Recommendations ;
- Tailor-made solutions ;
- Test phase monitoring ;
- Production programming.

## » Demand for quality

At GECITECH, the quality is based on a full integration and a solid control of the production chain.

- Hoses manufacturing: silicone extrusion, braiding, knitting, spiraling following the Good Manufacturing Practices defined in the Guidelines Eudralex ;
- Machining of 316L stainless steel fittings and other alloys upon request: SMS, CLAMP, DIN, ASME BPE, ISO,...;
- Hoses assembly with NRS® swaged fittings or reusable aseptic fittings ;
- Three levels of traceability in the production process: standard, high, ultra high.

Thanks to this A to Z mastery, GECITECH is able to offer its clients high quality products, meeting the most demanding international standards: **FDA, USP Class VI, BfR, ATEX, Regulations (EC) 10/2011, 1935/2004, 3A ...**



GECITECH has been ISO 9001 certified since 2005

### Europe Branch - GECITECH Headquarters

Z.A. Pesselière - 10 rue Joseph-Marie Jacquard - 69780 Mions - FRANCE  
mail@gecitech.fr - ☎ +33 (0)478 206 525 - 📠 +33 (0)478 218 560

### USA Branch - GECITECH, LLC

357 Spook Rock Road - Suffern, NY 10901  
sales@gecitech.com - ☎ + 1 845 357 3900

### Japan Branch - GECITECH, ASIA CO., Ltd

2-20 Misaki-Cho, Chiyoda-Ku - Tokyo 101-0061  
info@gecitech.co.jp - ☎ +81 (3) 3263-7317

### India Branch - GECITECH India Pvt. Ltd.

G1/2, Kalpita Enclave, Sahar rd,  
Andheri East - Mumbai 400069  
sales@gecitech.in - ☎ +91 93 2325 5578

[www.gecitech.com](http://www.gecitech.com)

