

揉る



SILENT CUTTER

Cut

Knead

Mix

SC650-SC550-SC450-SC350-SC300-SC230-SC150-SC120/SCA/SC-J/NC/HC

● NEW CUTTER / HIGH SPEED SILENT CUTTER / FOOD CUTTER

Synchronize thin-cutting, agitating, kneading

SILENT CUTTER

Silent Cutter achieves kneading and mixing as well as Grinding Kneader, and is added various artifices and improvements to process in short time. Its durability is superior and the operation is easy.

Silent Cutter with kneader device finishes up the raw material with the best condition, and it is possible to expect the capacity increasing the time saving.

Application

Surimi (Fish Paste) Products, Meat Processing Products, Dairy Products, Foods containing vegetable protein and/or egg, Feed (breeding, bait for fishing), brewing (Miso, Soy sauce), seasoning, any other paste.

Features

■ The scraper is set beside the kneader device. The material which is adhered on the bowl surface is scraped by the scraper. Then they are quickly mixed and kneaded by the kneader device. This is why Silent Cutter can produce the completely finished products without leaving any unkneaded material on the bowl surface.

■ Mixing and kneading are done simultaneously. The material becomes glossy by add water.

■ The material volume increases and finishes softly since air goes into the material during mixing process.

■ Silent Cutter is easy to control the quality since 2 speed s for knife and bowl are chosen and combined freely.

【Full optional function】

■ Kneader device



Mixing function was developed to add the effect of kneading and mixing. The material which kneaded by Silent cutter with mixing function has good stretch, glossy and elasticity as well as Grinding kneader.

In addition, it is possible to expect improved efficiency and labor saving and the time saving. It is Mixing function which generalizes good points of Grind kneader and Silent cutter.

■ Speed changer

Speeds of knife and bowl can be set the combination of the speed change by dual speed changer.

■ Super slow device

This device rotates the knives extremely slow speed.

If this device is used with mixing function, the material has only stirring effect without cutting. It finishes softly and glossy product because much air and water go into the material while preventing heat. In case of solid mixture, it is able to mix without cutting.

■ Stainless steel specification

The main body is finished surface with stainless steel plate.

Bowl materials has 2 types; stainless steel (SCS13) and Stainless casting.

■ Bowl cover automatic open & close (SC120/150 are manual.)

■ Production management system (touch panel operation board)





■ Cutting knife (Selectable knife)

Standard type is 6 pcs/set of Round knife. 4 cut type, 8 pcs/set, 10 pcs/set are optionally available.

<8KNIVES/10KNIVES>

Slow down knife rotation speed and increase the knives so that kneading efficiency increase. It is high efficiency by faster bowl rotation speed and material contacts the knife enough because knife rotation speed is slow.



Turn our customer's voice into reality.

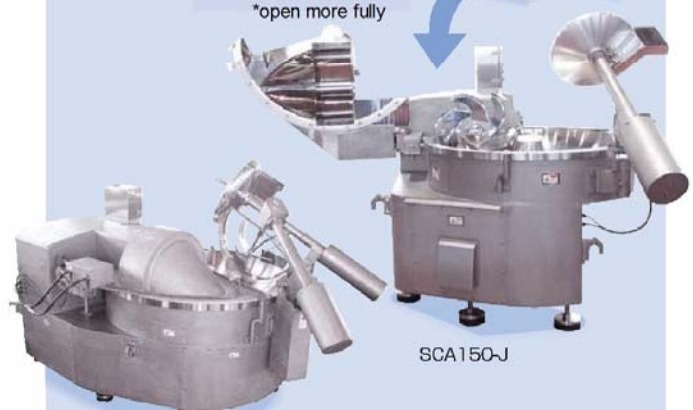
◆Bowl cover full-open system

SCA
Full Open Type SCA



To pursue easy cleaning!

*open more fully



SCA150-J

SCA230-J

*Back design of bigger type than SCA230-J with full open spec is round shape.

Many track record for meat processing.

◆HIGH SPEED SILINT CUTTER

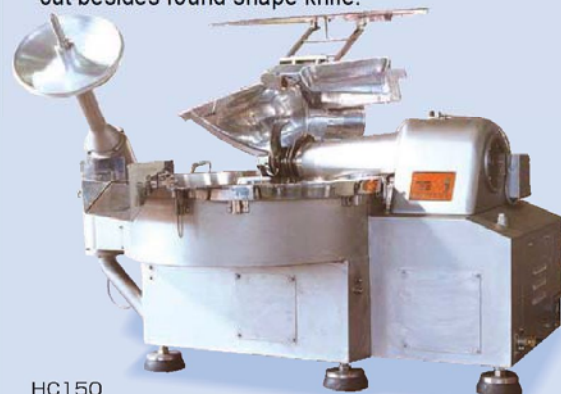
HC350 HC150

High Speed Silent Cutter Type HC350

High Speed Silent Cutter Type HC150

Selectable high/low rotation speed according to customer's request.

- High speed silent cutter is the best for meat processing.
- Low speed for rough cutting and mixing, high speed for the best emulsification and complete mixture.
- It is available special shape knife such as four cut besides round shape knife.



HC150

Our diversified lineup suggest the suitable model for

Superior speed control and improved motor efficiency by adopted new motor system realized energy saving!

Compact design which make points of workability and energy saving.

SC550-J
Silent Cutter SC550-J

SC450-J
Silent Cutter SC450-J

Silent cutter

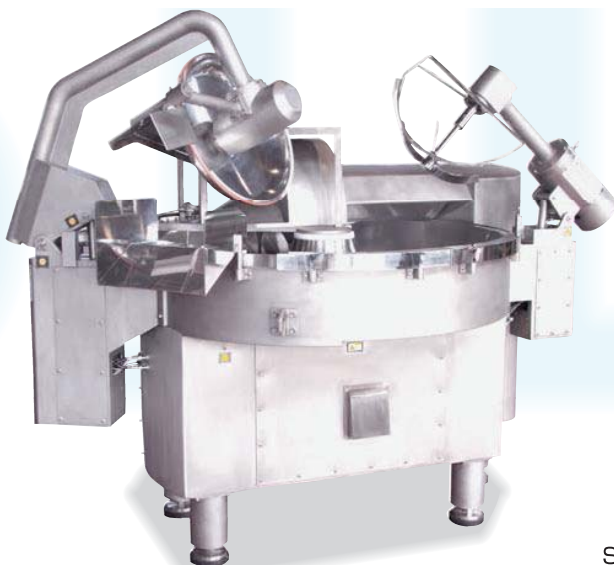
SC-J

Silent Cutter TYPE J

SC650-J

Silent Cutter SC650-J

SC650-J



SC450-J



SC350-J

Silent Cutter SC350-J



SC350-J

*Bowl cover open



**SILENT
CUTTER**

SC230-J

Silent Cutter SC230-J

SC150-J

Silent Cutter SC150-J

Simple back design!



SC230-J



SC150-J

SILENT CUTTER SPECIFICATION SC650-J / SC550-J / SC450-J / SC350-J / SC230-J / SC150-J

MODEL	BOWL INNER DIAM(mm)	BOWL CAPA(L)	KNIFE QTY	KNIFE SPEED (RPM)	BOWL SPEED (RPM)	TOTAL POWER(KW)	(KNIFE)	(BOWL)	(FAN)	(KNEADER)	(UNLOADER)	(KNEADER UP/DOWN)	(UNLOADER UP/DOWN)	(BOWL COVER OPEN/CLOSE)	WEIGHT(KG)	MEASUREMENT (L X W X H)mm
SC650-J	1888	650	6	1000/500	8/4	98.21	90	3.7	0.06	2.2	1.5	—	0.75	—	6000	3130×2660×2675
SC550-J	1760	550	6	1500/750	8/4	63.66	55	3.7	0.06	2.2	1.5	0.4	0.4	0.4	5500	3000×2800×2290
SC450-J	1656	450	6	1500/750	8/4	53.66	45	3.7	0.06	2.2	1.5	0.4	0.4	0.4	4700	2865×2180×2310
SC350-J	1533	350	6	1400/700	10/5	42.11	37	2.2	0.06	1.5	0.75	0.2	0.4	—	3800	2910×2420×2080
SC230-J	1294	230	6	1400/700	10/5	35.11	30	2.2	0.06	1.5	0.75	0.2	0.4	—	2800	2710×2130×1865
SC150-J	1146	150	6	1400/700	10/5	18.31	15	1.5	0.06	0.75	0.4	0.2	0.4	—	2200	2300×1825×1890

the production and various usage.

SC550

Silent Cutter SC550

SC450

Silent Cutter SC450

SC550



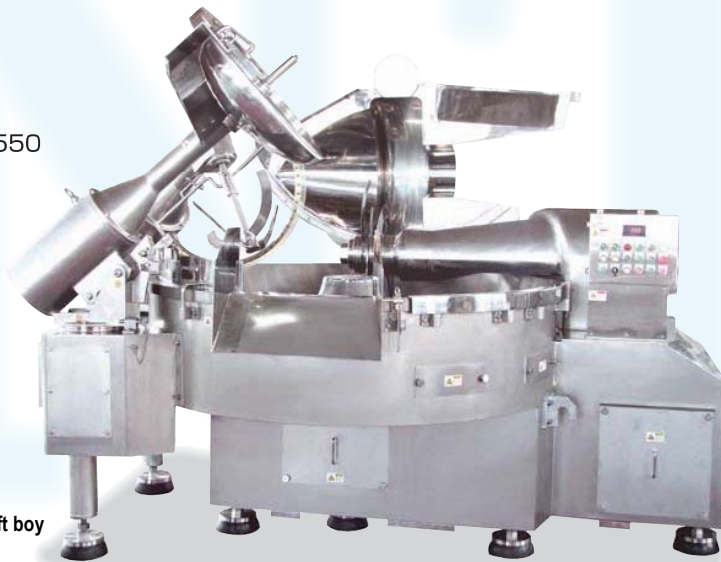
▲ Turning spec (SCA550)



▲ Automatic raw material throw in by Lift boy



▲ Take out the material by Unloader



SC350

Silent Cutter SC350



SC350

SC300

Silent Cutter SC300

SC230

Silent Cutter SC230



SC300

SC120

Silent Cutter SC120



SC120

*Safety cover attached (option)

SC150

Silent Cutter SC150



SC150

SILENT CUTTER SPECIFICATION SC550 / SC450 / SC350

*Kneader device, super slow knife speed, sealing cover are optional functions.

MODEL	BOWL INNER DIAM(mm)	BOWL CAPA(L)	KNIFE QTY	KNIFE SPEED (RPM)	BOWL SPEED (RPM)	TOTAL POWER(KW)	(KNIFE)	(BOWL)	(KNEADER)	(UNLOADER)	(KNEADER UP/DOWN)	(UNLOADER UP/DOWN)	(BOWL COVER OPEN/CLOSE)	WEIGHT(KG)	MEASUREMENT (L X W X H)mm
SC550	1760	550	6	1500/750	8/4	63.60	55	3.7	2.2	1.5	0.4	0.4	0.4	5000	3040×2400×2200
SC450	1656	450	6	1500/750	8/4	53.60	45	3.7	2.2	1.5	0.4	0.4	0.4	4200	3000×2380×2200
SC350	1533	350	6	1400/700	10/5	42.05	37	2.2	1.5	0.75	0.4	—	0.2	3700	2840×2150×2100

SILENT CUTTER SPECIFICATION SC300 / SC230 / SC150 / SC120

*Knife shaft motor with 75kw is available for SC550.

MODEL	BOWL INNER DIAM(mm)	BOWL CAPA(L)	KNIFE QTY	KNIFE SPEED (RPM)	BOWL SPEED (RPM)	TOTAL POWER(KW)	(KNIFE)	(BOWL)	(KNEADER)	(UNLOADER)	(KNEADER UP/DOWN)	(UNLOADER UP/DOWN)	(BOWL COVER OPEN/CLOSE)	WEIGHT(KG)	MEASUREMENT (L X W X H)mm
SC300	1423	300	6	1400/700	10/5	42.05	37	2.2	1.5	0.75	0.4	0.2	0.2	2800	2800×2030×2100
SC230	1294	230	6	1400/700	10/5	35.05	30	2.2	1.5	0.75	0.4	0.2	0.2	2600	2700×1920×1780
SC150	1146	150	6	1400/700	10/5	18.05	15	1.5	0.75	0.4	0.4	0.2 (option)	0.2 (option)	1630	2370×1830×1670
SC120	1049	120	4/6	1400/700	10/5	12.95	11	0.75	0.4	0.4	0.4	—	—	1360	2300×1500×1600

GREAT EFFECT FOR KNEADING
AGITATING MACHINE WITH UNIQUE CURVED BLADE

NEW CUTTER

NC550

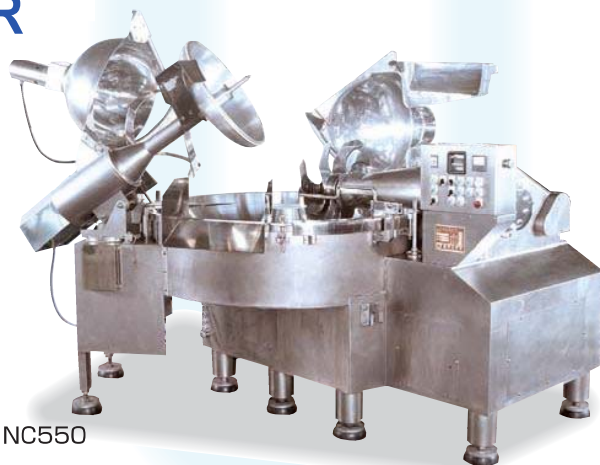
New Cutter NC550

NC450

New Cutter NC450

NC350

New Cutter NC350



NC550



NEW CUTTER

NEW TYPE COMBINATION MACHINE

SILENT CUTTER + **MIXER** + **GRINDING KNEADER**

This is the ideal Cutter for kneading with properties combined speed by Silent cutter and viscosity by Grind kneader. Unique blade which advanced agitator device enhances effects on agitating and kneading. Cutter knife and bowl rotate by 2 speeds. It can finish fine product by choosing the speeds for shredding, kneading and diluting Surimi.



Unique blade for kneader device

This unique blade is developed to improve the effects of mixing and kneading. Viscosity, gloss and mixing are enriched compared with Grind kneader.

BOWL COVER FULL OPEN

NCA

New Cutter NCA

NCA350



SC100-N/SC60-N/SC20-N

Silent Cutter SC100-N/SC60-N/SC20-N

- Suitable for examination, school practice, laboratory, ham, sausage, pickles, chopped material



SC60-N

フードカッター

FOOD CUTTER

- This is for small-scale production like laboratory and shop. It is also suitable for minced vegetable.



NEW CUTTER SPECIFICATION NC550 / NC450 / NC350

MODEL	BOWL INNER DIAM(mm)	BOWL CAPA(L)	KNIFE QTY	KNIFE SPEED (RPM)	KNIFE SUPER SLOW (RPM)	BOWL SPEED (RPM)	TOTAL POWER(KW)	WEIGHT (kgs)	MEASUREMENT (L X W X H)mm
NC550	1760	550	6	1500/750	80	8/4	67.1	5500	3450×2480×2470
NC450	1656	450	6	1500/750	80	8/4	57.1	5000	3360×2550×2080
NC350	1533	350	6	1400/700	80	10/5	46.25	4500	2950×2450×1950

*Knife shaft motor with 75kw is available for NC550.

SILENT CUTTER SPECIFICATION SC100-N / SC60-N / SC20-N

MODEL	BOWL INNER DIAM(mm)	BOWL CAPA(L)	KNIFE QTY	KNIFE SPEED (RPM)	BOWL SPEED (RPM)	TOTAL POWER(KW)	WEIGHT (kgs)	MEASUREMENT (L X W X H)mm
SC100-N	905	115	6	1450	7/8 (KNIFE/BOWL)	75/0.4 (KNIFE/BOWL)	640	1255×1100×1250
SC60-N	745	60	3	1450	9	2.2	450	1050×950×1165
SC20-N	565	23	3	1450	10	0.75	230	845×680×1130

FOOD CUTTER SPECIFICATION

MODEL	BOWL INNER DIAM(mm)	BOWL CAPA(L)	KNIFE QTY	KNIFE SPEED (RPM)	BOWL SPEED (RPM)	TOTAL POWER(KW)	WEIGHT (kgs)	MEASUREMENT (L X W X H)mm
FOOD CUTTER	383	5	2	1450	26.5	3P 100V 0.2	33	520×440×480

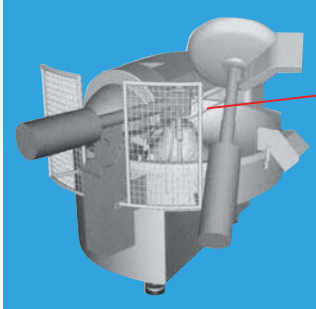
HIGH SPEED SILENT CUTTER SPECIFICATION / HC350 / HC150

MODEL	BOWL INNER DIAM(mm)	BOWL CAPA(L)	KNIFE QTY	KNIFE SPEED (RPM)	BOWL SPEED (RPM)	TOTAL POWER(KW)	(KNIFE)	(BOWL)	(UNLOADER)	(BOWL COVER)	WEIGHT (kgs)	MEASUREMENT (L X W X H)mm
HC350	1533	350	6	3000/1500	15/7.5	59.85	55	3.7	0.75	0.4	3900	2860×2150×2100
HC150	1146	150	6	3000/1500	15/7.5	41.3	37	3.7	0.4	0.2	1750	2470×1650×1670

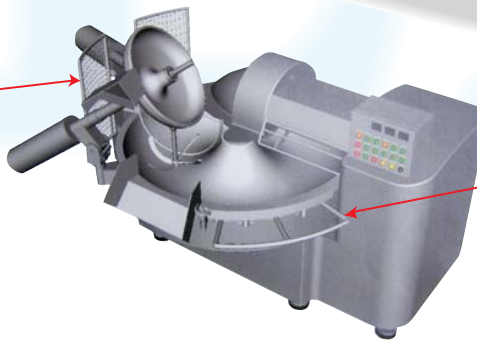
Enhance safety and maintainability

(PROMOTION OF SAFETY MEASURES)

"The ordinance on industrial safety and health" was issued in October 2013 which obliged it to safety measures depending on characteristic of work. Not only worker using machine but also manufacturer making machine must make safety measures. We would like to introduce some safety measures on Silent cutter.



Safety guard for kneader device



Safety guard for material inlet

Progress safety and maintainability (measure examples)



● Fully enclosed bowl cover (*manual)



● Cover auto up & down

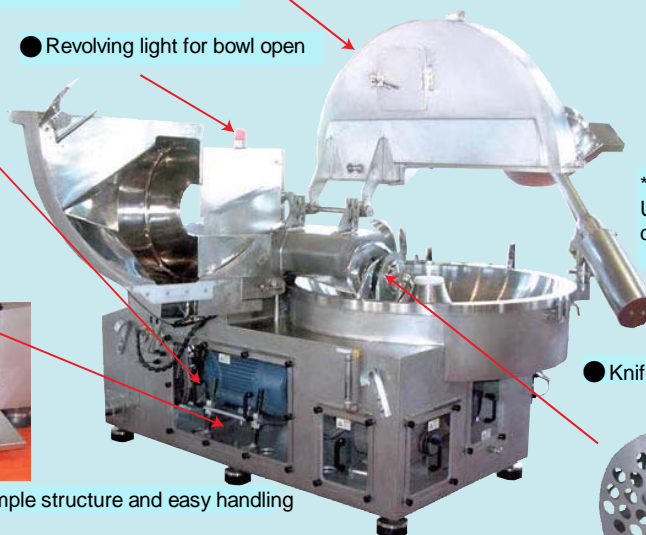
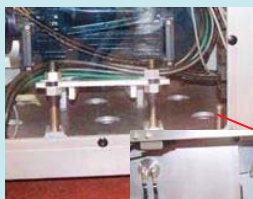


● Enclosed cover on material inlet

● Transparent cover (for visual checking)

● Revolving light for bowl open

● Drains inside of body frame (slide type)



*Bowl cover, unloader Up&down only work during push the button

● Knife cover for cleaning

● Knife detachment device with simple structure and easy handling



● Accident prevention in case of maintenance.

*Frame cover detachment sensor

*Handle type braker attached to control board door

Emergency stop button

It can stop the motor instantly by starting the brake with built-in motor and interrupting the electricity to knife and inverter. (It may cause the machine trouble.)



SAFETY



株式会社ヤナギヤ
YANAGIYA MACHINERY CO., LTD.

head office & factory

189-18 Yoshiwa, Ube City, Yamaguchi Pref. Japan

TEL: +81-836-62-1665 FAX: +81-836-62-1611

EU office

67, Quai Boissy D'Anglas 78380-Bougival, France

TEL: +33-6-8556-0914 FAX: +33-1-3969-3832

<http://www.ube-yanagiya.com>