



<https://www.hiuierpac.com>



HAINAN HIUIER INDUSTRIAL CO., LTD.

ADD: Room 708, Building 15#, Phase 2 Longhu Paradise Walk, No.15
Nanhai Avenue, Longhua District, Haikou, Hainan, China
Zip Code:570105
E-mail:albert@hiuierpac.com
Phone:+86 15508686099

Huiier

HAINAN HIUIER INDUSTRIAL CO., LTD.
PROFESSIONAL BEVERAGE PACKAGING SUPPLIER

DIRECTORY

01-02
COMPANY PROFILE

03-04
ALUMINUM CANS

05-06
PRINTING STYLES

07-08
CAN ENDS & CAN HOLDERS

09-10
TINPLATE CANS

15-18
PET CANS

19-20
BEER

21-22
BEVERAGE

23-26
BEER & BEVERAGE (OEM/ODM)

27-28
BEER KEG & FILLING MACHINE

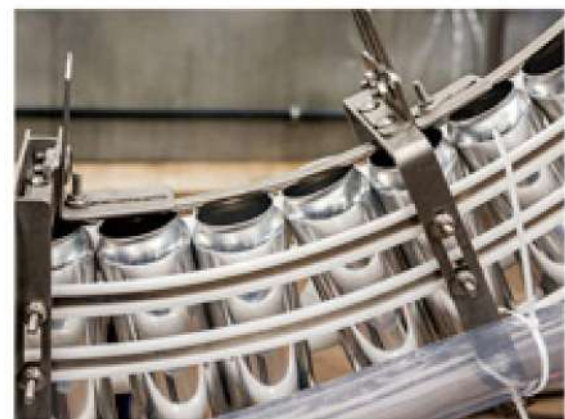
11-12
TINPLATE EASY OPEN END

13-14
TINPLATE PRINTING FEATURES

29-30
PRODUCTS AND SAMPLES



DESIGN



MANUFACTURE



FILLING



COMPANY PROFILE

H-luier

Hainan Hiuiet Industrial Co., LTD., located in Hainan Province China, we specialize in research and development innovation, designing, manufacturing and supply of ECO-friendly beverage packaging Products. Including aluminum cans, can ends, tin can, aluminum bottles, aluminum cup, PET can, can carrier, sealing machine, beer keg, filling machine, etc. With 20 years experience and 9 manufacturing sites across China mainland, we could provide packaging solutions for your beverage industry, from small-scale to world's most loved beverage brands, whether you're producing beer, carbonated beverage, energy drinks, cold brew coffee, soda water etc., We'd be honored to work with you and create a striking and enhanced presence for your brand.

Meanwhile, Hiuiet have our beer and beverage factory, we already established comprehensive domestic supplying chains, OMO (on-line-merge-offline) distribution systems in China, our Fruit Beer has occupied the biggest market share in China mainland. With 6 automatic filling systems, we can provide OEM for beer, cocktail, carbonated beverages, energy drinks, soda water etc. With our advantages, our products have dominated the domestic market as well as exported to a variety of markets including Asia, Europe, the Middle East, and Africa, etc. Our company is looking forward to cooperating with customers in the world in OEM.

What We Offer?

- 1) One-stop solution for your beer and beverage packaging.
- 2) Eco-friendly and state-of-art technology products.
- 3) Good quality control & Highly competitive prices.
- 4) Best professional team and Smooth communication.
- 5) 10 billion cans per year supply capacity, 2 hours reach the port, 7*24H service.
- 6) Effective OEM&ODM service.

Why HIUIER?

- 1) 20 years experience, 9 manufacturing sites , 10 billion cans per year supply capacity.
- 2) With certification ISO, FSSC 22000 V4.1, SGS, FDA etc, Professional export to serve global buyers.
- 3) Supplier of top brands Tsingtao beer, Heineken, Coca Cola , Monster Energy, etc.,.
- 4) Proficient in R&D, our products can be customized as needed and Eco-friendly.
- 5) Provide full category aluminum cans, beer kegs, filling line etc, One-stop solution for your packaging line.
- 6) Private label beer and beverage production line, providing beverage OEM customization.
- 7) 2 hours reach the port, 7*24H Professional pre-sale and after-sale services.



ALUMINUM CANS

H-luier
CAN MAKE MORE POSSIBLE
SUSTAINABLE RECYCLABLE



STANDARD CANS



ITEM	SIZE	HEIGHT	BODY DIA	END DIA
SD250	250mL	92mm	Φ211/66.0mm	Φ202
SD310	310mL	109mm	Φ211/66.0mm	Φ202
SD330	330mL	115mm	Φ211/66.0mm	Φ202
SD355	355mL	122mm	Φ211/66.0mm	Φ202
SD375	375mL	129mm	Φ211/66.0mm	Φ202
SD450	450mL	153mm	Φ211/66.0mm	Φ202
SD473	473mL	157mm	Φ211/66.0mm	Φ202
SD500	500mL	168mm	Φ211/66.0mm	Φ202

SLEEK CANS



ITEM	SIZE	HEIGHT	BODY DIA	END DIA
SK200	200mL	96mm	Φ204/57.4mm	Φ202
SK250	250mL	115mm	Φ204/57.4mm	Φ202
SK269	269mL	122.5mm	Φ204/57.4mm	Φ202
SK310	310mL	138mm	Φ204/57.4mm	Φ202
SK330	330mL	146mm	Φ204/57.4mm	Φ202
SK355	355mL	157mm	Φ204/57.4mm	Φ202
SSK450	450mL	168mm	Φ209/63.4mm	Φ202

KING CAN & SLIM CANS



ITEM	SIZE	HEIGHT	BODY DIA	END DIA
SM190	190mL	104.5mm	Φ202/53.0mm	Φ200
SM250	250mL	134mm	Φ202/53.0mm	Φ200
K750	750mL	160mm	Φ307/84.0mm	Φ209
K1000	1L	204.8mm	Φ307/84.0mm	Φ209

PRINTING STYLES

We use 8 colors gravure printing process for aluminum can production. The gravure printing expands the range of graphic expression and allows metallic color printing. Matte overvarnish and partial matte printing are also available.
“Matte finish” creates a dull surface that is not shiny, while more shiny surface finish is called “gloss finish.”

INNER COATING
■100% Food grade; Epoxy and BPNAI available; Classic wine inner coating



Glossy
Most selected printing effects.



Matte
Matte varnish creates a dull surface that is not shiny.



Fluorescent
Clearly visible in daylight, the effects are completely revealed when the can is exposed to UV light.



Thermochromic
Thermochromic printing on aluminum cans to create dynamic labels.
That change colors at different temperatures.



Laser-engraved
Fine halftone dots and high screen rulings allow higher-quality printing such as smooth gradation and fine line works.



Digital Printing
Most selected for new design to test the market or attend exhibitions.



Touch/Tactile
A special ink and over-varnish are combined to create a textured surface on distinct areas of the beverage can.



ALUMINUM CAN ENDS

Aluminum end, especially with Stay-On Tab (SOT) is widely usde for beverage cans, as the tab does not detach from the end after opening to prevent the tab from being scattered.

We provide a wide range of ends in different diameters and aperture sizes for various contents and filling conditions.

END DIAMETER

■ 200, 202, 206, 209

APERTURE SIZE

■ Small ■ Wide

CUSTOMIZATION

- Shell, could be different color, letter carved/printing, embossed;
- Tab, could be different color, letter/logo/QR code printing.



BEER CAN HOLDERS

Type:	2pack, 4pack, 6pack, 10pack
Material:	HDPE/PP
Color:	Black, red, blue, white, etct.
LOGO:	Embossed
Use:	For aluminum cans or PET cans
Package:	660*510*410 carton box
Indicate:	Customization is available



TINPLATE CANS



Huier
CAN MAKE MORE POSSIBLE
SUSTAINABLE RECYCLABLE

THREE-PIECE CAN CUSTOMIZATION

ITEM	BODY DIA	HEIGHT
MT202#	Φ52.3mm	39~160mm
MT211#	Φ65.3mm	39~200mm
MT300#	Φ72.9mm	40~200mm
MT307#	Φ83.3mm	42~205mm
MT401#	Φ98.9mm	43~150mm
MT404#	Φ105mm	39~150mm
MT603#	Φ153.5mm	68~250mm

TWO-PIECE CANS (Round)

ITEM	BODY DIA	HEIGHT
T202#	Φ52.3mm	39~104mm
T211#	Φ65mm	32~68mm
T300#	Φ73mm	32~53mm
T307#	Φ83mm	25~54mm
T401#	Φ99mm	29~55mm

TINPLATE BEER CANS

ITEM	VOLUME	HEIGHT	BODY DIA	END DIA
MT1L-38	1L	224.8mm	Φ80mm	Φ38mm
MT1L-305	1L	218mm	Φ80mm	Φ303
MT1L-307	1L	191.5mm	Φ86.5mm	Φ307
MT2L-28	2L	243mm	Φ112mm	Φ28mm
MT2L-38	2L	254mm	Φ112mm	Φ38mm



TINPLATE CANS SERIES

►5#

ITEM	VOLUME	HEIGHT	BODY DIA	END DIA
MT538#	50ML	37mm	Φ202/52.3mm	Φ113/202
MT5071#	100ML	72mm	Φ202/52.3mm	Φ113/202
MT5088#	145ML	88mm	Φ202/52.3mm	Φ113/202
MT5104#	180ML	104mm	Φ202/52.3mm	Φ113/202
MT5122#	210ML	123mm	Φ202/52.3mm	Φ200/211
MT5133#	250ML	133mm	Φ202/52.3mm	Φ113/202
MT5146#	270ML	146mm	Φ202/52.3mm	Φ113/202

►7#

ITEM	HEIGHT	BODY DIA	END DIA
MT732#	31mm	Φ275/73.0mm/75.0mm	Φ300
MT749#	49mm	Φ275/73.0mm/75.0mm	Φ300
MT7108#	103mm	Φ275/73.0mm/75.0mm	Φ300
MT7104#	104mm	Φ275/73.0mm/75.0mm	Φ300
MT7114#	113mm	Φ275/73.0mm/75.0mm	Φ300



►6#

ITEM	VOLUME	HEIGHT	BODY DIA	END DIA
MT634#		33mm	Φ211/65.3mm	Φ211
MT636#		36mm	Φ211/65.3mm	Φ209
MT640#		39mm	Φ211/65.3mm	Φ211
MT691#	250ML	90mm	Φ211/65.3mm	Φ206
MT695#	240ML	94mm	Φ211/65.3mm	Φ206
MT6100#		100mm	Φ211/65.3mm	Φ209
MT6102#	280ML	102mm	Φ211/65.3mm	Φ209
MT6108#	280ML	108mm	Φ211/65.3mm	Φ206/209
MT6113#	310ML	114mm	Φ211/65.3mm	Φ206/209
MT6122#	355ML	122mm	Φ211/65.3mm	Φ206/209
MT6126#	380ML	126mm	Φ211/65.3mm	Φ206/209
MT6138#	430ML	139mm	Φ211/65.3mm	Φ206/209
MT6140#	350ML	140mm	Φ211/65.3mm	Φ206/209
MT6171#	500ML	171mm	Φ211/65.3mm	Φ206/209

►8#

ITEM	HEIGHT	BODY DIA	END DIA
MT842#	40mm	Φ302/80.0mm/86.0mm	Φ303/307
MT8105#	101mm	Φ302/80.0mm/86.0mm	Φ303/307
MT8960#	250mm	Φ302/80.0mm/86.0mm	Φ303/307

►9#

ITEM	VOLUME	HEIGHT	BODY DIA	END DIA
MT940#	170ML	45mm	Φ307/99.0mm	Φ401
MT955#	260ML	54mm	Φ307/99.0mm	Φ401
MT9124#		120mm	Φ307/99.0mm	Φ401
MT9144#		140mm	Φ307/99.0mm	Φ401
MT9160#		157mm	Φ307/99.0mm	Φ401

TINPLATE CANS SERIES◀◀◀◀

EASY OPEN END



■ BEVERAGE CAN ENDS



■ FOOD CAN ENDS—ALUMINIUM



■ FOOD CAN ENDS—IRON



■ DAILY CHEMICALS CAN ENDS



■ BOTTOM ENDS



■ PEEL OFF LID



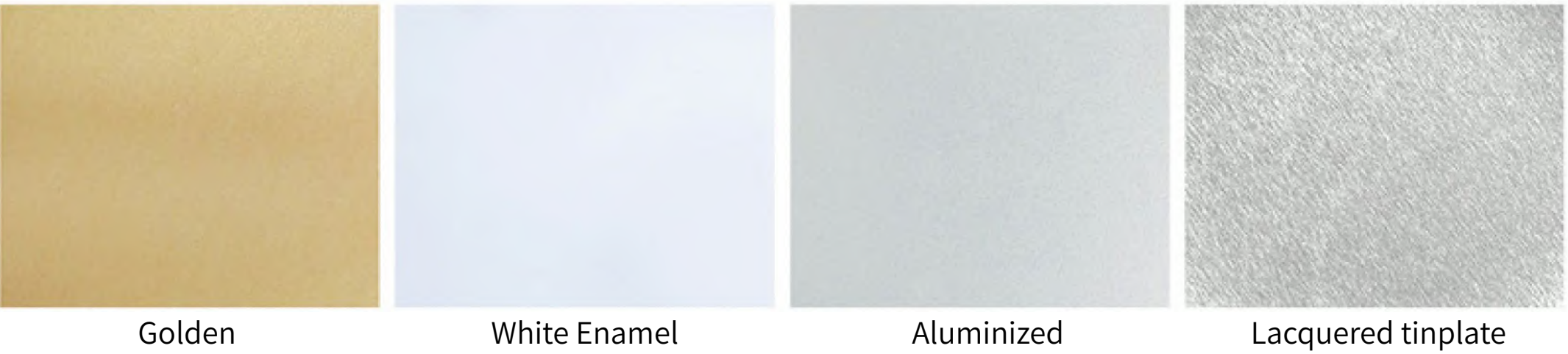
DRIED FOOD

MILK POWDER

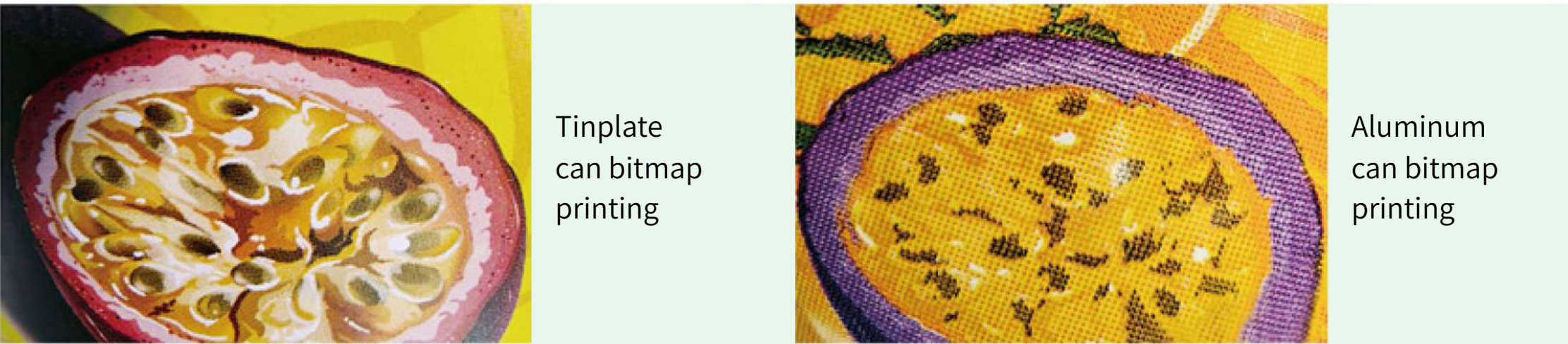
RETORTABLE FOOD

TINPLATE PRINTING FEATURES

Tinplate Printing bring the experience of glamorous and shiny metal cans. Multi-coating surface options available include base white, varnish, golden lacquer. Each coating is carefully applied to enhance the performance and appearance of the material, ensuring it meets your specific needs and requirements. We specialize in creating exquisite metal can printing that align perfectil with your nuique customized design.



BITMAP PRINTING



HIGH DEFINITION PRINTING



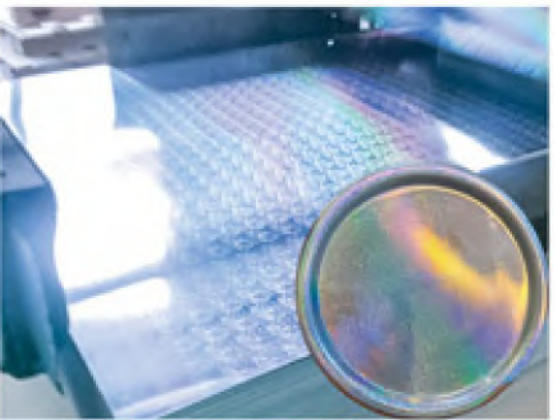
- Color printing
Wide gamut printing. CMYK colors free, not limit total colors.



- Anti-counterfeiting printing
Inks anti-counterfeiting, platemaking anti-counterfeiting, gamut anti-counterfeiting, microcode character anti-counterfeiting.



- Glossy / matte
Specific embossed matt, Special crackle and antique finish varnishes.



- Laser holography
3D Laser holography effect has very good anti-fake functions, also brings added value for your brands with its sepcial and attractive apperance.

PET CANS

H-luier
CAN MAKE MORE POSSIBLE
SUSTAINABLE RECYCLABLE



►HIA#



ITEM	VOLUME	HEIGHT	INSIDE NECK DIA
HIA16	200ML	96mm	55mm
HIA13	330ML	146mm	55mm
HIA4	360ML	155mm	55mm



ITEM	VOLUME	HEIGHT	INSIDE NECK DIA
HIA7	350ML	122mm	55mm
HIA5	500ML	168mm	55mm



ITEM	VOLUME	HEIGHT	INSIDE NECK DIA
HIA14	500ML	150mm	55mm
HIA10	550ML	167mm	55mm
HIA6	650ML	167mm	55mm
HIA11	700ML	167mm	55mm
HIA12	900ML	167mm	55mm



ITEM	VOLUME	HEIGHT	INSIDE NECK DIA
HIA8	250ML	92mm	55mm
HIA9	330ML	115mm	55mm
HIA1	355ML	122mm	55mm
HIA15	400ML	133mm	55mm
HIA2	500ML	168mm	55mm

PET CANS

►HIB#



ITEM	VOLUME	HEIGHT	INSIDE NECK DIA
HIB5	210ML	70mm	55mm
HIB14	360ML	135mm	55mm



ITEM	VOLUME	HEIGHT	INSIDE NECK DIA
HIB4	650ML	157mm	55mm
HIB11	700ML	188mm	55mm
HIB6	900ML	189mm	55mm
HIB8	1000ML	208mm	55mm



ITEM	VOLUME	HEIGHT	INSIDE NECK DIA
HIB10	500ML	123mm	55mm
HIB12	500ML	135mm	55mm
HIB1	500ML	140.5mm	55mm
HIB3	500ML	150mm	55mm
HIB9	500ML	168mm	55mm
HIB2	500ML	168.5mm	55mm

►HIC#



ITEM	VOLUME	HEIGHT	INSIDE NECK DIA
HIC4	150ML	58mm	55mm
HIC3	250ML	90mm	55mm
HIC2	300ML	144mm	55mm
HIC1	605ML	168mm	55mm

CAN ENDS (Φ202)



All pet can types are universal, customizable

BEER

Hainan Hiuer Industrial Co., LTD, Founded in 2005, has started beer brewing and beverage production for about 20 years. We already established comprehensive supplying chains and distribution systems in China.
With 3 production lines, our beer total sales volume was more than 140,000 tons last year, especially our Fruit Beer has occupied the biggest market share in China mainland.
With 6 automatic filling systems, we can provide OEM for beer, cocktail, carbonated beverages, energy drinks, soda water etc.
Our products have dominated the domestic market as well as exported to many countries overseas.

BEER

■ Lager beer, fruit beer, wheat beer, stout beer

OEM/ODM PROJECT INFORMATION

- Production type: Lager, Wheat, Stout, Fruity beer, Special type craft beer, Hard seltzer, Cocktail
- Alc:0.5%-25%
- Package type: All series cans



Lager Beer

Alc 4.1%vol, 8%vol
330mL*24, 500mL*12, 500mL*24,
1L*6, 1L*12



Strong Lager Beer

Alc 12%vol, 16%vol
330mL*24, 500mL*12, 500mL*24,
1L*6, 1L*12



Wheat Beer

Alc 4.6%vol, 5.6%vol
330mL*24, 500mL*12, 500mL*24,
1L*6, 1L*12



Stout Beer

Alc 4.6%vol, 5.6%vol
330mL*24, 500mL*12, 500mL*24,
1L*6, 1L*12



Craft Fruit Beer

Alc 2.5%vol
330mL*24, 500mL*12, 500mL*24,
1L*6, 1L*12



Fruit Beer

Alc 3.3%vol
330mL*24, 500mL*12, 500mL*24,
1L*6, 1L*12



Hard Seltzer

Alc 3.5%vol
330mL*24, 500mL*12, 500mL*24,
1L*6, 1L*12



Cocktail

Alc 8%vol
330mL*24, 500mL*12, 500mL*24,
1L*6, 1L*12

FLAVOR Peach, Lychee, Cherry, Grapefruit, Pineapple, Lime, etc

CUSTOMIZE



We provide one-stop solution for your beverage customization, from beer style, alcohol content, packaging design, manufacturing to delivery.

BEVERAGE

Hainan Hiuer Industrial Co., LTD, Founded in 2005, has started beer brewing and beverage production for about 20 years. We already established comprehensive supplying chains and distribution systems in China.
With 3 production lines, our beer total sales volume was more than 140,000 tons last year, especially our Fruit Beer has occupied the biggest market share in China mainland.
With 6 automatic filling systems, we can provide OEM for beer, cocktail, carbonated beverages, energy drinks, soda water etc. Our products have dominated the domestic market as well as exported to many countries overseas.

OEM/ODM PROJECT INFORMATION

- Production type: Functyional beverage, Sport drink, Bubble drink, Carbonated bev-
erage, Soda water, Coffee beverage
- Package type: All series cans

CUSTOMIZE



We provide one-stop solution for your beverage customization, from formulation R&D, packaging design, manufacturing to delivery.



Functional Beverage

330mL*24, 500mL*12, 500mL*24,
1L*6, 1L*12
Providing health supplements to
help you increase energy



Carbonated Beverage

330mL*24, 500mL*12, 500mL*24,
1L*6, 1L*12
Carbonation brings unique taste
and refreshing stimulation

FLAVOR Pomegranate, Mango, Lychee, Peach, Grapefruit, etc



Bubble Drink

330mL*24, 500mL*12, 500mL*24,
1L*6, 1L*12
Flavor: Pomegranate, Mango,
Lychee, Peach, Grapefruit, etc



Soda Water

330mL*24, 500mL*12, 500mL*24,
1L*6, 1L*12
Lightweight 0 additives, natural
weak alkali, balanced minerals

FLAVOR Pomegranate, Mango, Lychee, Peach, Grapefruit, etc



Sport Drink

330mL*24, 500mL*12, 500mL*24,
1L*6, 1L*12
Accurate formula, professional pro-
portion to accelerate absorption



Coffee Beverage

330mL*24, 500mL*12, 500mL*24,
1L*6, 1L*12
Pure coffee aroma, smooth on
the palate, soft balance

FLAVOR Latte, Americano, Cappuccino, Espresso, etc

BEER & BEVERAGE(OEM/ODM)



CARBONATED BEVERAGE



ENERGY DRINK



SPORT DRINK



WHEAT BEER



STOUT BEER



LAGER BEER



SODA WATER



HARD SELTZER



COFFEE BEVERAGE



BELGIAN BEER



FRUIT BEER



COCKTAIL

BEER & BEVERAGE(OEM/ODM)

Founded in 2005, our factory has started beer brewing, for about 20 years. We already established comprehensive domestic supplying chains, OMO (online-merge-offline) distribution systems in China. With 3 production lines, our beer sells well and total sales volume was more than 120,000 tons last year, especially our Fruit Beer has occupied the biggest market share in China mainland.



HAZARD ANALYSIS AND CRITICAL CONTROL POINT (HACCP) SYSTEM CERTIFICATE

Certificate No.: 114HACCP180028

This is to certify that the Hazard Analysis and Critical Control Point (HACCP) system of

SHANDONG GAOTANG JBS BIOENGINEERING CO., LTD.

Unified Social Credit Code: 91371326788492540

Haiyun Development Zone, Gaotang County, Licheng City, Shandong Province, China

Has been audited in accordance to the following Hazard Analysis and Critical Control Point (HACCP) system standard:

Hazard Analysis and Critical Control Point (HACCP) System Certification Requirements (V1.0)

The Applicable Scope:

The production of pasteurized beer, special beer and related activities of involved sites

Not a valid number for 12, 2017

Valid number: 16106, 2021

Not a valid number for 12, 2020

Issued by: **Wu Jinyang**

Shandong East Asia Certification Center Co., Ltd.

EACC

CNAS

FDA | U.S. Food and Drug Administration

FFR | Food Facility Registration

Facility Name/Address Information:

Facility Name: JINAN ERJUN IMPORT & EXPORT CO.,LTD.

Facility Address: ROOM 1304,BUILDING C,DONGHIAN INTERNATIONAL PLAZA,ERJUN EAST ROAD,LICHENG DISTRICT, JINAN, SHANDONG, 250100, CHINA

Registration Information:

U.S. FDA Registration No.: 19205195088

This file is the rendering of the Food Facility Registration Module page, not the Registration certificate. This file makes no other representations or warranties, nor does this certificate make any representation or warranties to any person or entity other than the named certificate holder, for whose sole benefit it is issued.

This file assumes no liability to any person or entity in connection with the foregoing. The U.S. Food and Drug Administration does not issue a certificate of registration, nor does the U.S. Food and Drug Administration ever require a certificate of registration.

Registration Expires: 12/31/2024

出口食品生产企业备案证明

备案编号: 3700/12158

企业名称: 山东高唐锦博士生物工程有限公司

企业地址: 山东省聊城市高唐县汇鑫开发区

备案品种: 熟啤酒、特种啤酒

有效期: 长期

中华人民共和国聊城海关

2018年04月13日

中华人民共和国海关总署监制



PACKAGING	CARTON SIZE (L * W * H mm)	QUANTITY OF 1 20 FOOT CONTAINER	
		CTN	CAN
24*330ml	410*275*125	2200	52800
12*500ml	275*175*205	3000	36000
24*500ml	410*275*175	1550	37200
12*1L	370*275*200	1400	16800
6*1L (38#)	250*165*225	2950	17700
12*1L (38#)	330*250*225	1475	17700



PACKAGING	CARTON SIZE (L * W * H mm)	QUANTITY OF 1 40 FOOT CONTAINER	
		CTN	CAN
24*330ml	410*275*125	3100	74400
12*500ml	275*175*205	4100	49200
24*500ml	410*275*175	2050	49200
12*1L	370*275*200	1900	22800
6*1L (38#)	250*165*225	3800	22800
12*1L (38#)	330*250*225	1900	22800



BEER KEG & FILLING MACHINE

BEER KEG



ITEM	S2-3L
SIZE	3L
HEIGHT	293mm
BODY DIA	134mm
MATERIAL	PET



ITEM	3L
SIZE	3L
HEIGHT	258mm
BODY DIA	160mm
MATERIAL	PET

H-luier
KEG MAKE MORE POSSIBLE
SUSTAINABLE RECYCLABLE



ITEM	S5-3L
SIZE	3L
HEIGHT	264mm
BODY DIA	153mm
MATERIAL	PET



ITEM	5L
SIZE	5L
HEIGHT	313mm
BODY DIA	180mm
MATERIAL	PET

FILLING MACHINE

Parameters:

Size	1.44*1.04*1.66M
Package size	1.60*1.25*1.85M
Keg type	3L KEG
Power port	3P+N+G
Filling method	Inverted filling
Weight	213KG
Capacity	5L 240 KEG/H
Power	3P 380V 50Hz
Power consumption	1KW
Water tank volume	Volume=135L



PRODUCTS AND SAMPLES

