

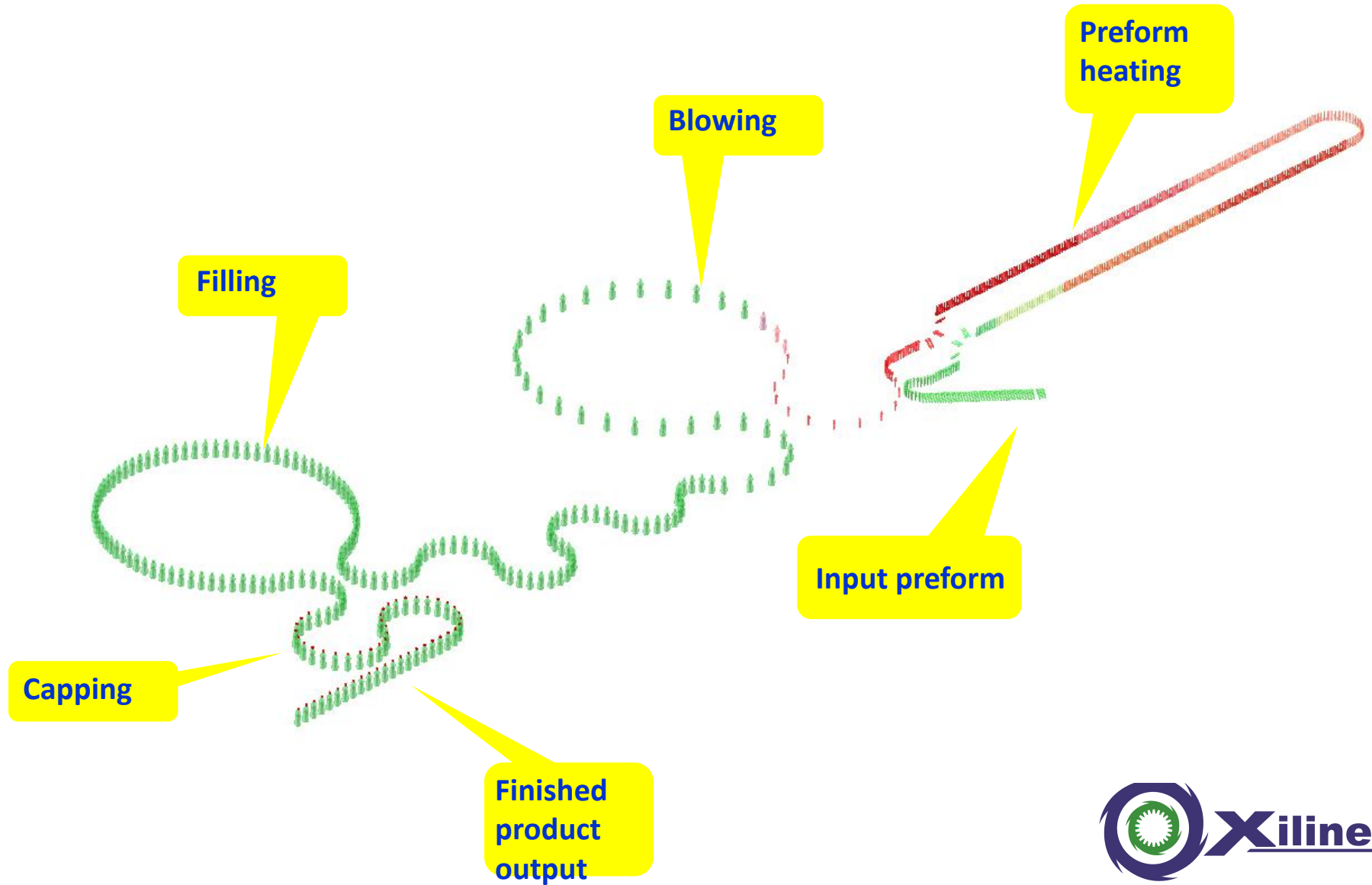
Introduction of Xili combi-block machine



Combi-block machine represent the current development trend of liquid packing technology, it means to fulfill the whole action of blowing, filling and capping in a single machine which accomplish the creative packaging technology from PET perform to bottling liquid products.



Process flow of combi-block machine.



Advantage of combi-block machine (Take 36000 BPH line for example)

Labor cost advantage

Reduce 3 person :

1 : An operator of blowing machine ;

2 : 2 inspection person in the air conveyor

Investment advantage

Reduce the construction area about 100 square meters

(Building value: RMB100,000)

Reduce the use of purified room 30% (Value:RMB200,000)

Advantage of energy saving

Saving the rinsing water 5 ton/hour,

Motor energy consumption of air supply system

(Motor of air supply).



Cost calculation of combi-block machine.

Labor cost

*Reduce 3 person : 1 person for blowing machine,
2 person for inspection of air conveyor
 $3 \times 120 = \text{RMB } 90,000$ per year*

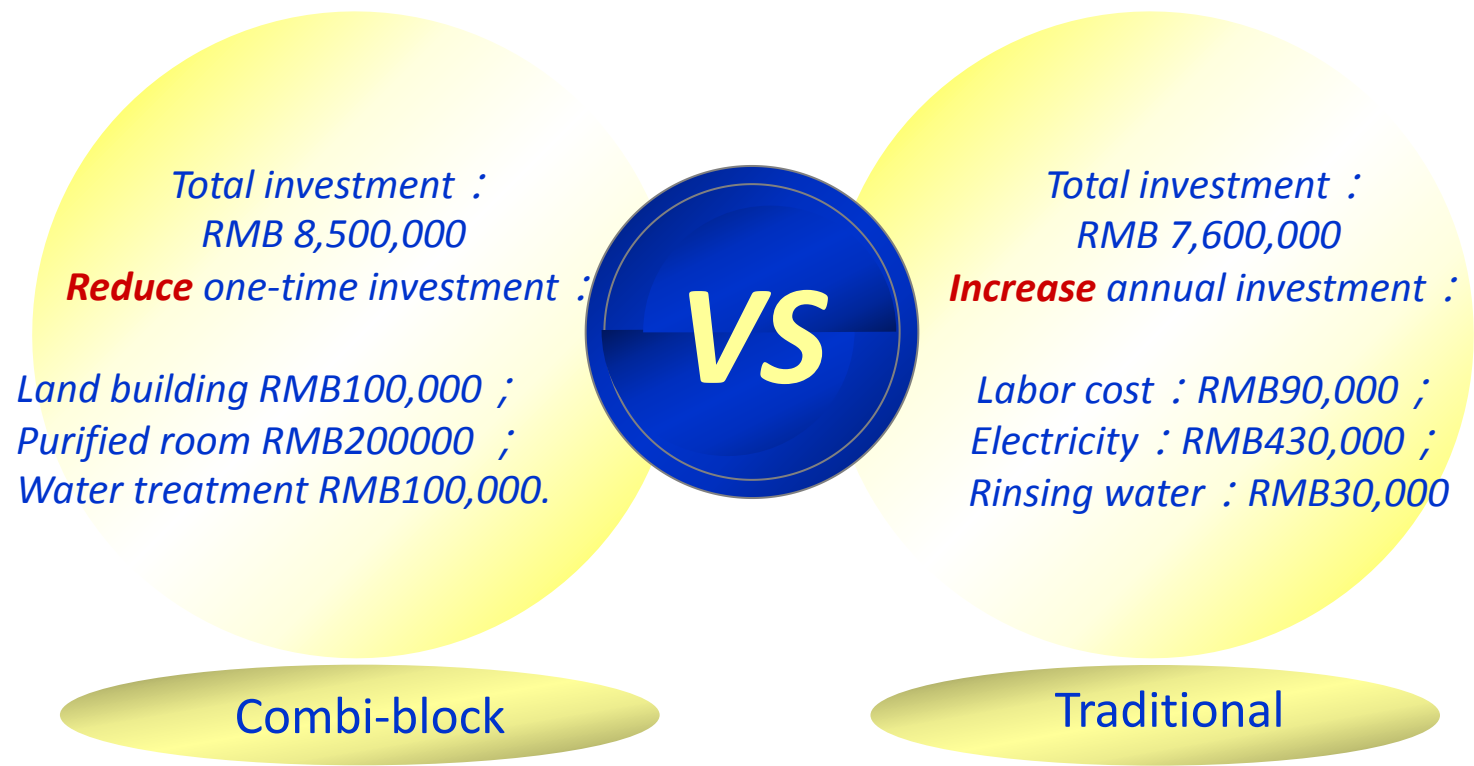
Electricity cost

*36000BPH air convey system about 180 meter ;
28 motors (3KW):
 $3 \times 28 \times 20 \times 1.0 \times 250 = \text{RMB } 420,000$ per year*

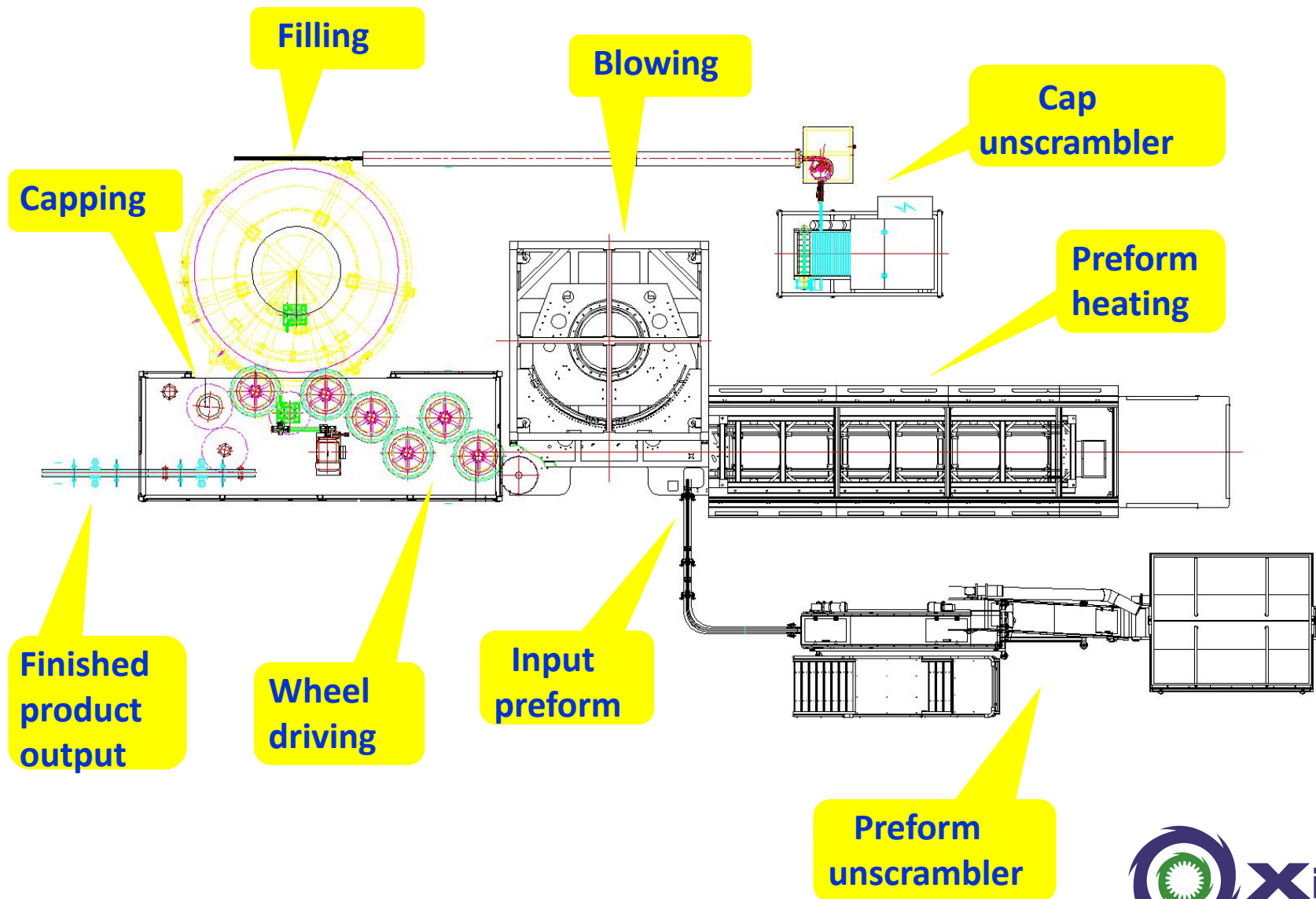
Material cost

*Rinsing water : $120\text{ml} \times 36000\text{BPH} \times 1.1 \times 20 = 95$ ton per day
Two stage RO : $95 \times 1.2 \times 250 = \text{RMB } 30,000$ per year.*

Investment comparison of combi-block machine and traditional production line.



Structure of Xili Combi-block machine.

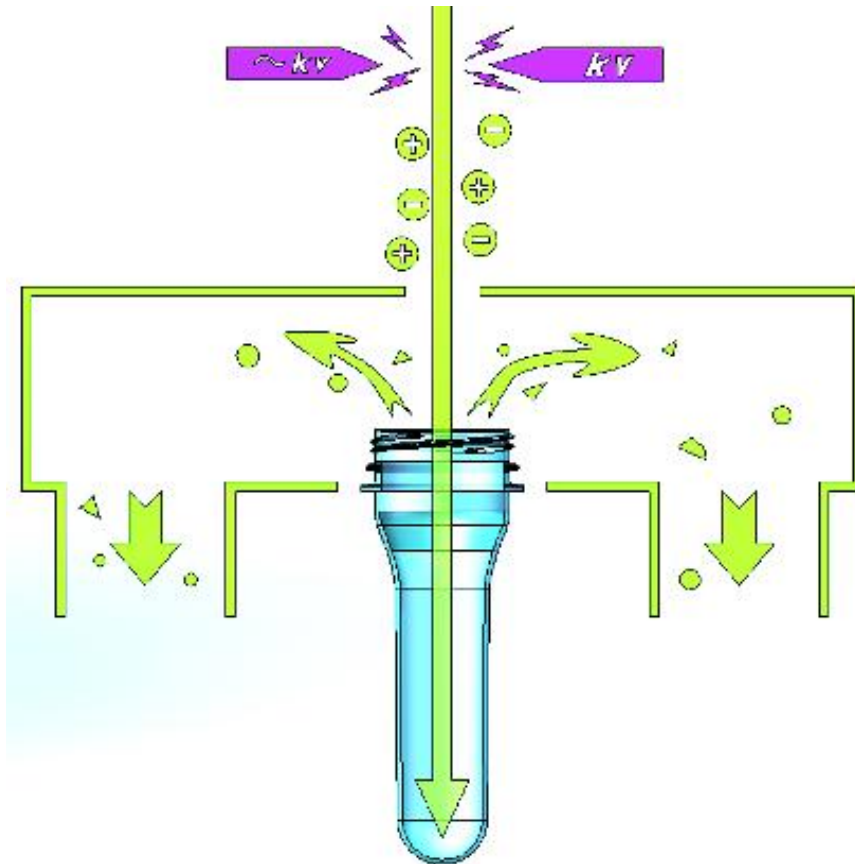


Technology advantage of Xili Combi-block machine.



International matured and stable method of perform supply and unscrambler, perform enter into elevator from hopper, the perform transit to unscrambler by elevator, 2 incline rotating rollers automatically arranging the dropped performs and output it from unscrambler orderly, the surplus performs will back to hopper by reject wheel and return through backflow tunnel. Fully automatic control for arranging performs, high efficient but do not hurt the preform's surface.

Technology advantage of Xili Combi-block machine.



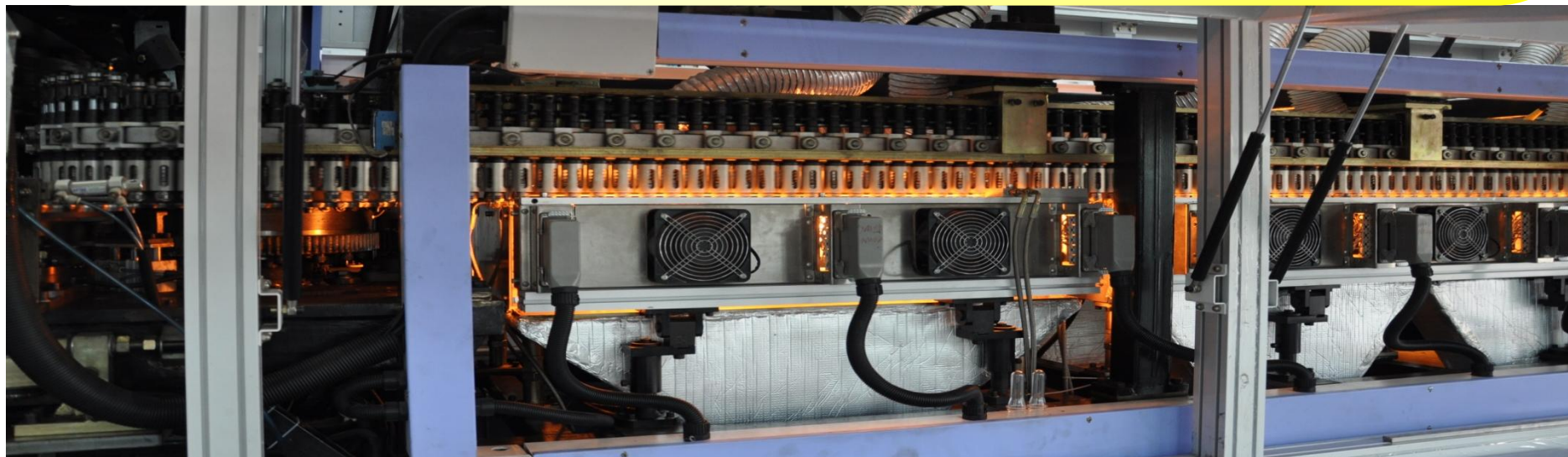
Principle of electrostatic cleaner:
Install a duster on the slide of perform input lane, using 2-4 bar pressured air before perform enter into heating oven, purging perform by electrostatic cleaner, clean up the dust, impurity or other dirt of the perform. Ionizer and pneumatic components adopt CAMOZZI and Mickey.

Technology advantage of Xili Combi-block machine.

Adopt the best heating technology method of bottle upward direction, to avoid reversing mechanism not smooth and stretch the length of the heating chain that lead by perform inversion, and solving the problem, such as inexact positioning, fast wearing of reversing mechanism and chain, and lower speed, etc;

The air flow and cooling water lane for bottle neck, cooling protection device of heating area with carefully designing, so the bottle neck could be protected efficient;

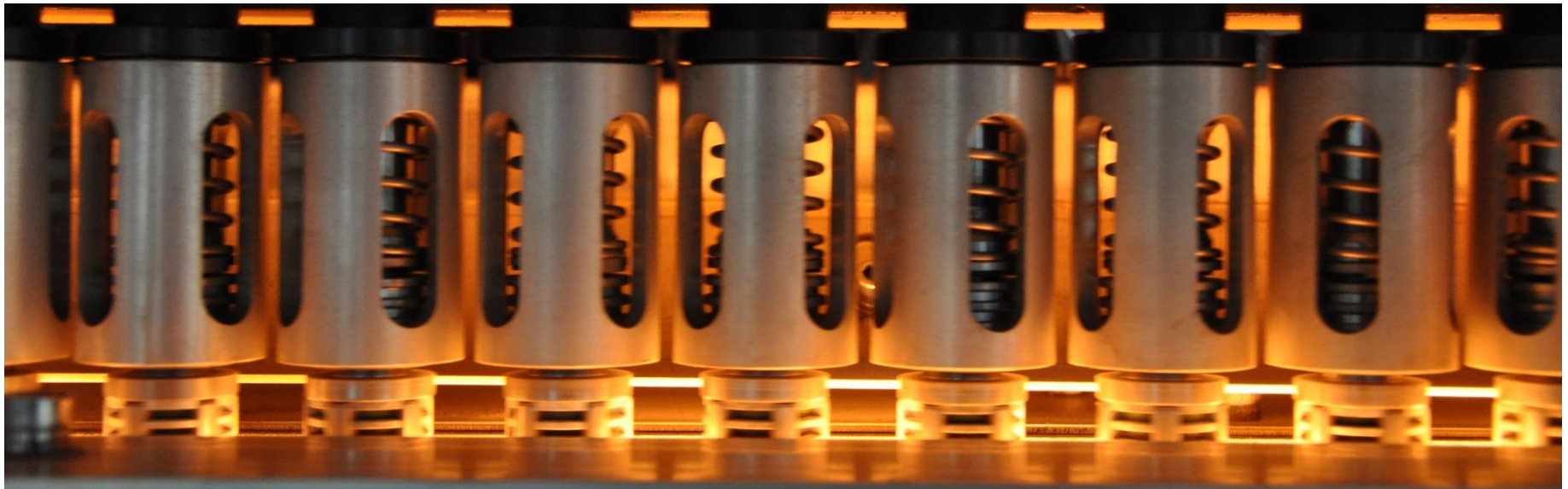
To transit the parameters of heating oven and perform temperature to PLC by temperature sensor and infrared thermometer, setup the actual temperature and setting temperature by touch screen; Actual adjusting the power of per heating lamp by the PID operation function of PLC, and lead the whole performs get the best temperature curve.



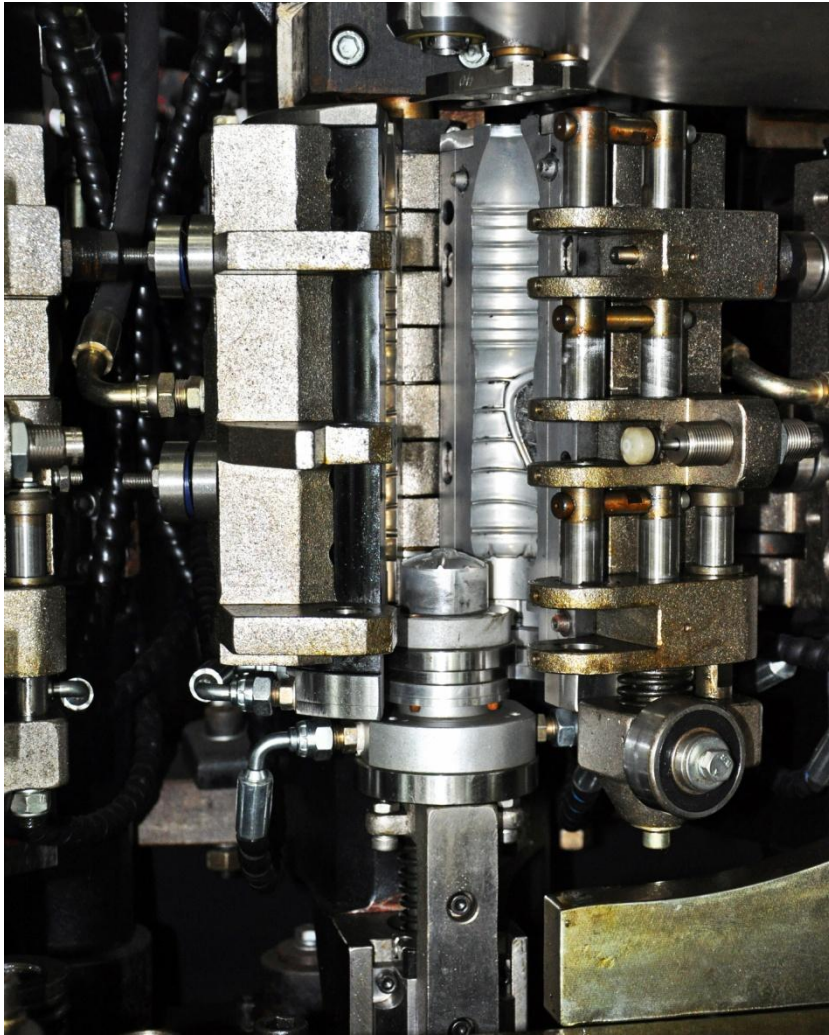
Technology advantage of Xili Combi-block machine.

Adopt the merits of heating oven from oversea companies, new design of building block heating oven, install the special lengthen short wave infrared heating lamp, for the further optimization of filament wave length spectrum and reflect coating, the reflection efficiency is greatly improved, heating oven more energy saving, installation and maintenance more convenient;

To enhance the stability of heating by optimize and adjust the air flow of heating area. Cooling the perform body, screw opening and mandrels by unique 3 channel of air path, to avoid the screw opening of perform be deformed efficient.



Technology advantage of Xili Combi-block machine.



Specialized manipulator along cam curve to transit finished bottles, the high pressure valves adopt SACH, to ensure the stability of blowing technology. Independent developed integral high pressure valves and mechanical seal, have smaller blind spot of air space compared with similar products, to reduce the consumption of high pressure compressed air. To utilize the high pressure air of blowing for fulfilling the sealing of nozzle by backing pressure type in the inner of sealing cylinder, for reducing the shock of moulds by nozzle, and reducing the consumption of low pressure compressed air. The installation structure of the mold positioning conveniently and accurately, cooperate with cooling water quick connector with cut-off valve, to ensure the replacement of molds more quick and convenient, to replace the whole molds just need 2 hours.

Technology advantage of Xili Combi-block machine.



**Rotary plate adopt stainless steel;
Running stability and reliable.**

**Filling method is gravity filling; adopt ball
type liquid tank, liquid level controlled by
floating ball;**

Filling valve adopt ANS1316L;

**Each filling valve has the independent
return air channel, the substitutive air in
the PET bottle do not enter into the liquid
tank on the filling process.**

**Accomplish the control of filling volume
and high precise filling level by adding the
return air channel; high speed, high
precise of the filling valve.**

**Velocity of flow: 150ml/s, Liquid level
precision: $\leq \pm 3\text{mm}$**

Technology advantage of Xili Combi-block machine.



Adopt capping head of magnetic constant torque, the capping effect stable and reliable, defective rate $\leq 0.2\%$;

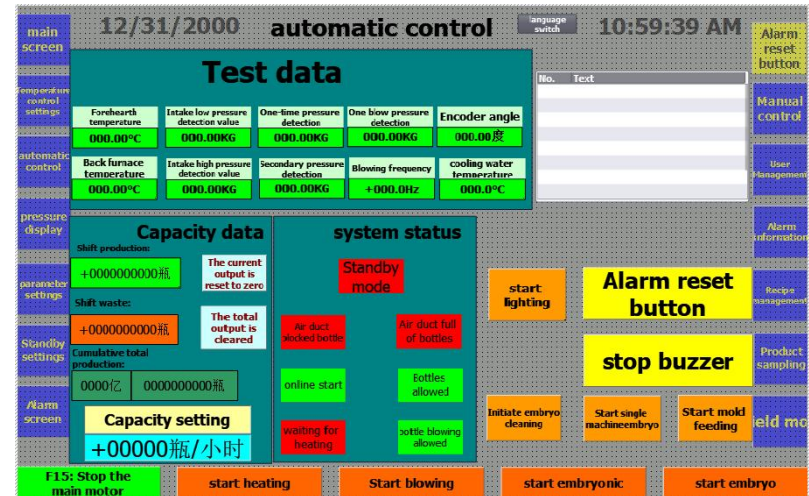
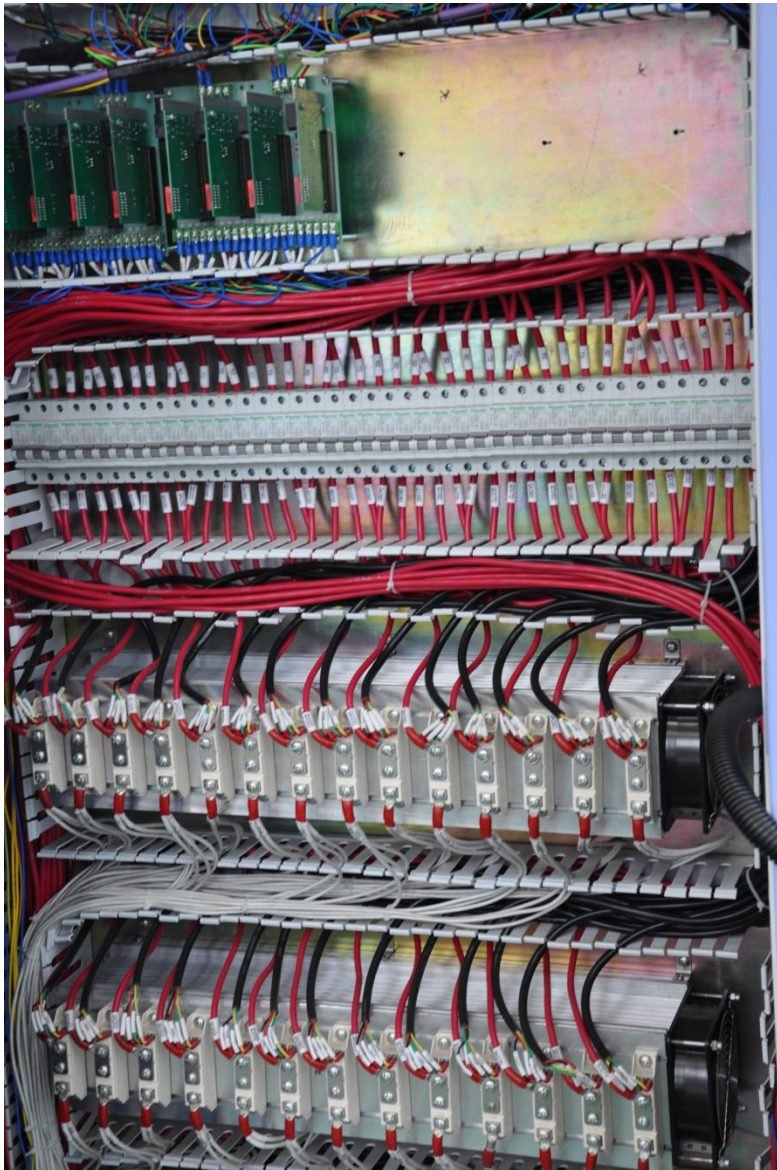
With against reverse cap and fetch reverse cap device on the cap guide rail, and install a set of photoelectric switch, the machine will stop running when not cap on the cap guide rail , for avoiding no cap bottle.

With inspect sensor on the capper, to control the output of caps with cap guide rail and lock cap cylinder on the pull cap plate, to ensure no bottle, no cap feeding, and reduce the consumption of caps.

High efficient centrifugal type of cap unscramble, very limit wear of caps.

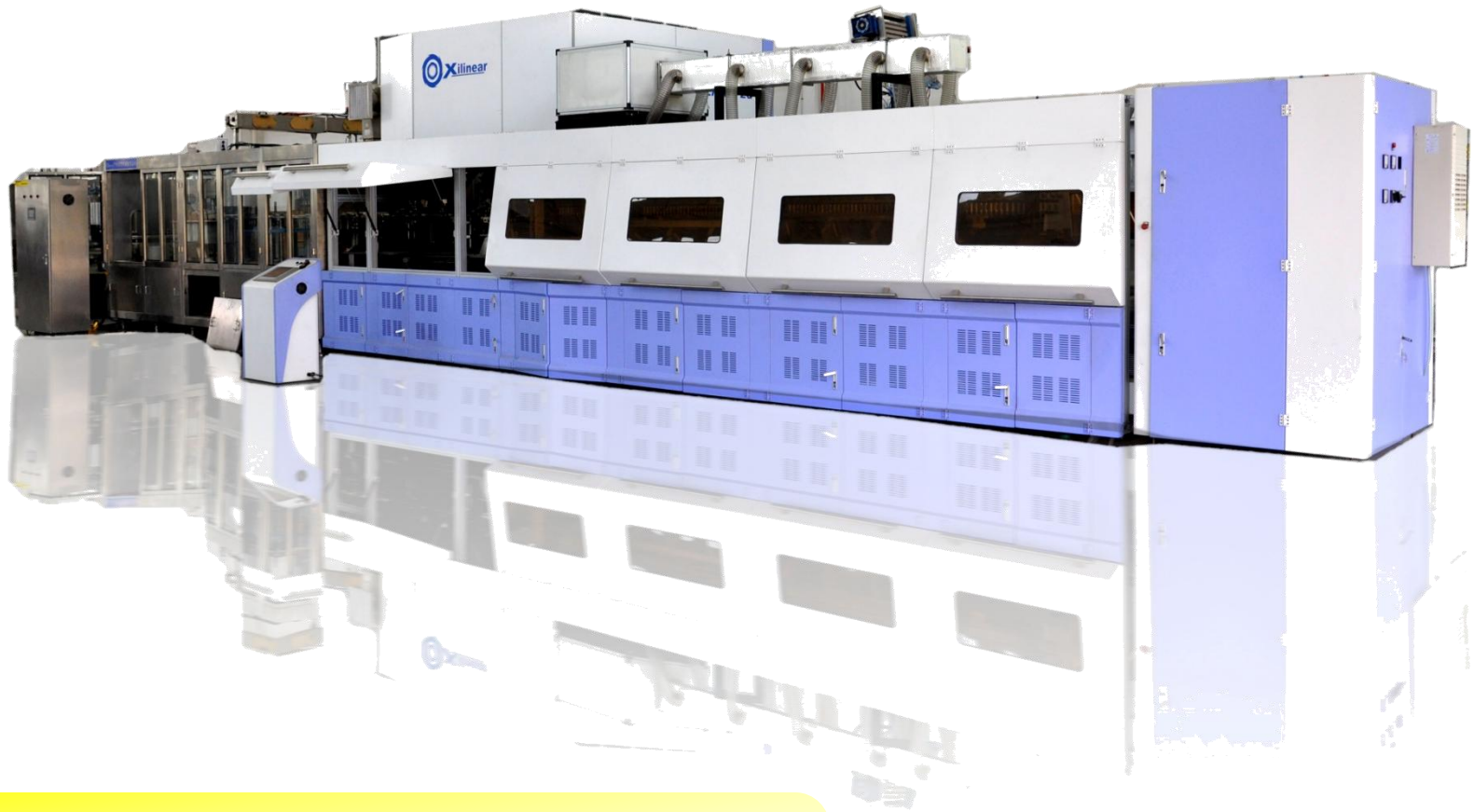
With lack of cap inspect mechanism on the cap unscramble device, to control the stop or running of the cap elevator.

Technology advantage of Xili Combi-block machine.



Adopt PLC control system for whole machine, to accomplish full processing system of combi-block machine from input performs to output bottles. Production speed, class output quantity, fault type, fault occurred are showed on the screen. Automatic count the messages, such as the time of fault, fault type, etc. With automatic centralized lubricating pump which controlled by PLC system, timed and quantitative refueling for each lubricating point, enhance the machine's stability when running.

Rotary combi-block machine.

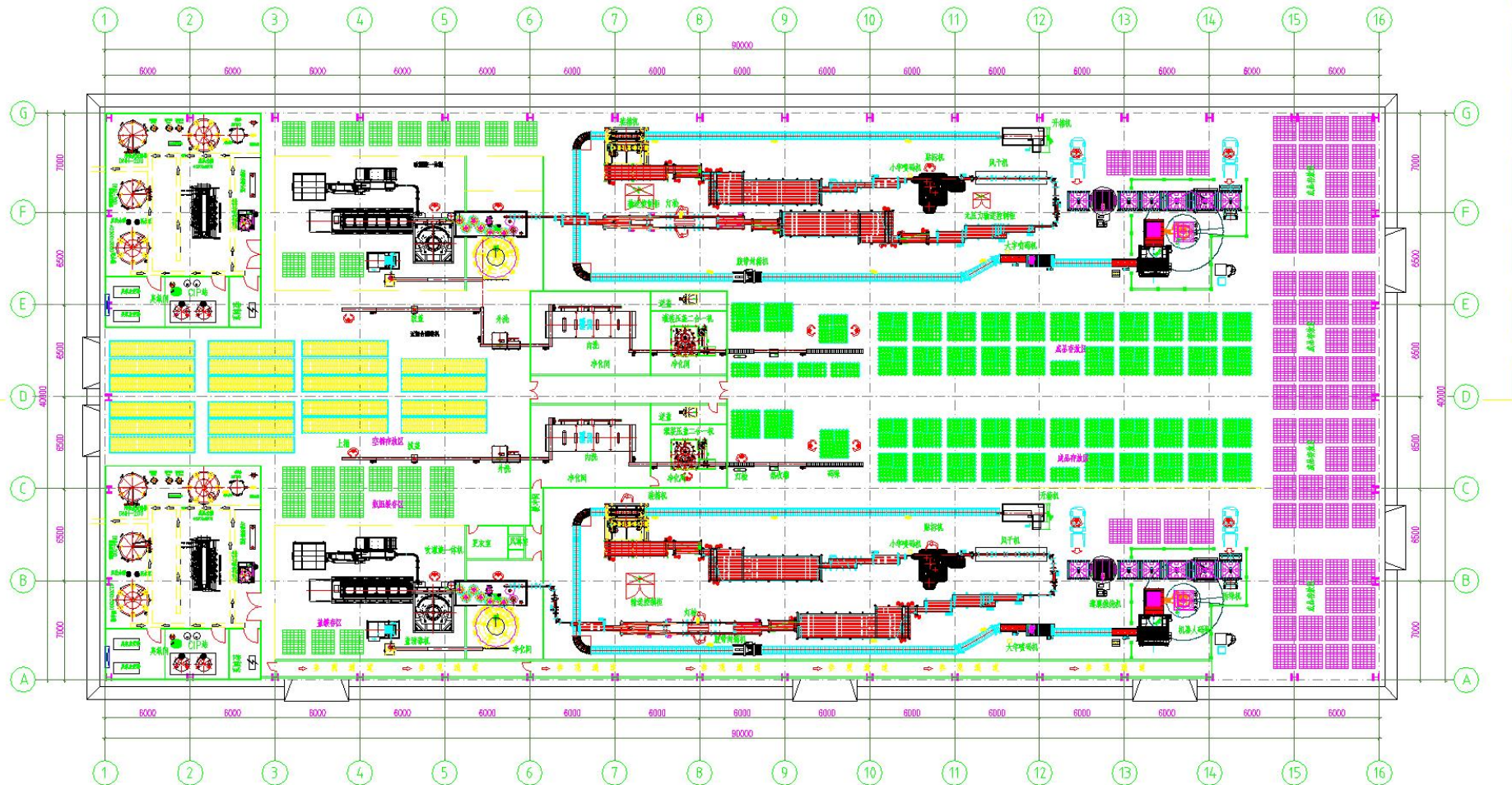


Volume: 0.3L~1.5L

Capacity: 15000 BPH ~40000 BPH



The project of fully engineering system --- Turnkey project.



Certificate of Registration



The Governing Board of
Q.A. International Certification Limited
hereby grants to:

Guangzhou Xili Machinery Co., Ltd.

Registration No. : QAIC / CN / 155218 - A

(hereinafter called the Registered Company) the right to be listed in the Directory of Registered Companies in respect of the services listed below. These services shall be offered by the Registered Company at or from only the address given below in accordance with the quality management system in compliance with **ISO 9001:2008**.

Address to which this Certificate refers :

**No. 132, Chuangqiang Road, Xintang Town, Zengcheng,
Guangzhou City, Guangdong Province, P.R. China**

Approved Scope to which this Certificate refers.

The Design, Manufacture of PET Bottle Blowing Machines

Signed for and on behalf of the Board

CHIEF EXECUTIVE

SCHEME MANAGER

Certificate Issue Date : 8th July 2015 - Certificate Expiry Date : 22nd June 2016

Date of Initial Registration : 8th July 2015 - Re-Certification Before : 7th July 2018

This Certificate of Registration is granted subject to the Regulations approved by the Board.

QA INTERNATIONAL

Q.A. International Certification Ltd.
Dudley Court
Dudley Road
Darlington
United Kingdom
DL1 8GG

Tel: +44 (0)1325 384272
Fax: +44 (0)1325 480980
www.qai.co.uk



THE QUALITY ASSURANCE SYSTEMS AUTHORITY
CERTIFICATION TO ISO 9001:2008, ISO 9001:2008, ISO 9001:2008, ISO 9001:2008

Certificate of Registration



The Governing Board of
Q.A. International Certification Limited
hereby grants to:

广州西力机械有限公司

78891051-9

Registration No. : QAIC / CN / 155218 - B

(hereinafter called the Registered Company) the right to be listed in the Directory of Registered Companies in respect of the services listed below. These services shall be offered by the Registered Company at or from only the address given below in accordance with the quality management system in compliance with **ISO 9001:2008**.

Address to which this Certificate refers :

中国广东省广州市增城市新塘镇创强路 132 号

Approved Scope to which this Certificate refers.

PET 吹灌旋一体机、旋转式与直线式吹瓶设备的设计、制造和服务

Signed for and on behalf of the Board

CHIEF EXECUTIVE

SCHEME MANAGER

Certificate Issue Date : 8th July 2015 - Certificate Expiry Date : 22nd June 2016

Date of Initial Registration : 8th July 2015 - Re-Certification Before : 7th July 2018

This Certificate of Registration is granted subject to the Regulations approved by the Board.

本证书信息可在国家认证认可监督管理委员会官方网站 (www.cnca.gov.cn) 上查询

QA INTERNATIONAL

Q.A. International Certification Ltd.
Dudley Court
Dudley Road
Darlington
United Kingdom
DL1 8GG

Tel: +44 (0)1325 384272
Fax: +44 (0)1325 480980
www.qai.co.uk




THE QUALITY ASSURANCE SYSTEMS AUTHORITY
CERTIFICATION TO ISO 9001:2008, ISO 9001:2008, ISO 9001:2008, ISO 9001:2008


Partial China clients infomation			
Item No.	Customer Name	Machine No.	Quantity
1	Henan Zhongwo Industrial Ltd	XLRC-16,XLRC-20	9 unit
2	Weixian Kechuang Equipment Ltd	XLRCL-14	1 unit
3	Luohe Jialijia Food and Beverages Ltd	XLRCL-10	2 unit
4	Jiaozuo Mingren Medical Ltd	XLRC-16	4 unit
5	Harbin Mingren Food Ltd	XLRC-20	1 unit
6	Puerce Tianjin Packing Ltd	XLRC-8	2 unit
7	Jiali Grain and Oil (Fangcheng) Ltd	XLRCG-06,XLRCG-4	2 unit
8	Heshan Huayua Food and Beverage Ltd	XLRCL-10	3 unit
9	Quanzhou Fuhai Grain and Oil Industrial Ltd	XLRCG-4	2 unit
10	Yihai Jiali (Zhengzhou) Food Ltd	XLRCG-4	1 unit
11	Yihai Jiali (Lianyungang) Food Ltd	XLRCG-4	1 unit
12	Fuzhou Xiaohezi Food and Beverage Ltd	XLB-10CLF	3 unit
13	Shenzhen Jingtian Food and Beverage Ltd	XLB-06CL	5 unit
14	Jiangmen Suilian Packaging Ltd	XLB-08H	2 unit
15	Zhanjiang Yesu Mineral Water Ltd	XLB-08C,XLB-08CF	6 unit

Partial China clients infomation			
Item No.	Customer Name	Machine No.	Quantity
17	Hebei Pugongying Food Ltd	XLB-08C	2 unit
18	Hebei Tiantian Dairies Ltd	XLB-08H	1 unit
19	Henan Zhongwo Beverage Ltd	XLB-08H,XLB-10CF	27 unit
20	Henan Jiaozuo Mingren Medical Ltd	XLB-10CF	4 unit
21	Henan Liziyuan Food and Beverage Ltd	XLB-08H	6 unit
22	Shangdong Weihai Water Ltd	XLB-04C	1 unit
23	Shangdong Huiyuan Drinking Water Ltd	XLB-08C	2 unit
24	Shangdong Longkou Grain and Oil Ltd	XLB-02G	1 unit
25	Shangxi Weisikeda Drinking Ltd	XLB-08H	2 unit
26	Beijing Pamier Spring Water Ltd	XLB-08CF	1 unit
27	Guangxi Bama Liqi Beverage Ltd	XLB-08C,XLB-08CF	2 unit
28	Guangxi Bama Spring Water Ltd	XLB-08C	2 unit
29	Guizhou Quantie Water Ltd	XLB-08C	1 unit
30	Chongqing Bolong Food Ltd	XLB-06C	3 unit
31	Chongqing Zhongfu Container Ltd	XLB-06CL	1 unit

Partial China clients infomation			
Item No.	Customer Name	Machine No.	Quantity
33	Chongqing Qipai Food and Beverage Ltd	XLB-08C,XLB-08CF	3 unit
34	Yunan Zhenmin Food Ltd	XLB-06C	1 unit
35	Yunan Tianran Beverage Ltd	XLB-06C,XLB-04CL	6 unit
36	Yunan Xiaobaobei Beverages Ltd	XLB-06C	1 unit
37	Yunan Shenye Ltd	XLB-08C	1 unit
38	Harbin Shuda Beverages Ltd	XLB-06C	2 unit
39	Harbin Mingren Food Ltd	XLB-06C	1 unit
40	Gansu Hezhengbaba Grouo Ltd	XLB-08H	1 unit
41	Naaisi Chengdu Ltd	XLB-04CE	4 unit
42	Nanhai Youzhi Industrial Ltd	XLB-03G,XLB-08CLF	2 unit
43	Yihai Wuhan Grain and Oil Ltd	XLB-04CE,XLB-06CLF	2 unit
44	Yiha Jiali Chongqing Grain and Oil Ltd	XLB-06CLF,XLB-03G	4 unit
45	Yihai Yantai Grain and Oil Ltd	XLB-03G,XLB-04Y	2 unit
46	Jiali Grain and Oil (Fangcheng) Ltd	XLB-06CL,XLB-04Y	3 unit
47	Jiali Gain and Oil Qingdao Ltd	XLB-04Y,XLB-04CE	5 unit
48	Yiha Grain and Oil Ningbo Ltd	XLB-04CE	4 unit

Partial China clients infomation				
Item No.	Customer Name	Machine No.	Qty	
49	Jiali Shijiazhuang Grain and Oil Ltd	XLB-04Y	1 unit	
50	Jiali Nanchang Grain and Oil Ltd	XLB-03G	1 unit	
51	Jiali Zhangjiagang Grain and Oil Ltd	XLB-04Y	1 unit	
52	Jiali Lianyungang Grain and Oil Ltd	XLB-03G	1 unit	
53	Jiali Guangzhou Grain and Oil Ltd	XLB-06CLF	1 unit	
54	Weifan Precision Ltd	XLB-04CE	1 unit	
55	Quanzhou Fuhai Grain and Oil Ltd	XLB-06CLF	1 unit	
56	Guangdong Taoda Beverages Ltd	Coca Cola Bottling （OEM）	2 unit	
57	Yunnan Rongtai Plastic Ltd	XLB-06CLF	1 unit	
58	Shengyan Aixin Industry Ltd	Coca Cola Bottling （OEM）	2 unit	
59	Shangdong Taoda Beverages Ltd	Coca Cola Bottling （OEM）	4 unit	
60	Harbin Taoda Beverages Ltd	Coca Cola Bottling （OEM）	1 unit	
61	Beijing Changsheng Taoda Beverages Ltd	Coca Cola Bottling （OEM）	1 unit	
62	Xinjiang Taoda Beverages Ltd	Coca Cola Bottling （OEM）	5 unit	
63	Nanning Taoda Beverages Ltd	Coca Cola Bottling （OEM）	3 unit	


Partial China clients infomation			
Item No.	Customer Name	Machine No.	Qty
64	Changchun Taoda Beverages Ltd	Coca Cola Bottling （OEM）	1 unit
65	Zhuhai Zhongfu Group (Kunshan)	Pepsi Cola Bottling （OEM）	1 unit
66	Zhuhai Zhongfu Group (Guizhou)	Pepsi Cola Bottling （OEM）	1 unit
67	Zhuhai Zhongfu Group (Nanchang)	Pepsi Cola Bottling （OEM）	3 unit
68	Zhuhai Zhongfu Group (Lanzhou)	Pepsi Cola Bottling （OEM）	1 unit
69	Zhuhai Zhongfu Group (Kunming)	Pepsi Cola Bottling （OEM）	2 unit
70	Zhuhai Zhongfu Group (Chongqing)	Pepsi Cola Bottling （OEM）	2 unit
71	Suzhou Spring Water Factory	XLB-08H	1 unit
72	Zhongshan Rikang Food and Beverages Ltd	XLB-08H	2 unit
73	Nanjing Maoding Food and Beverages Ltd	XLB-10CLF	1 unit
74	Zhengzhou Quanxing Beverages Ltd	XLB-8CF	1 unit

Partial overseas clients infomation				
Item No.	Customer Name	Machine No.	Qty	
1	HUAYU-FILLING MACHINERY CO.,LTD (Algeria)	XLB-06CE	1 unit	
2	SNACKINGS (Pvt.) LIMITED （SRI LANKA)	XLB-06HL	1 unit	
3	AQUAMIST (KENYA)	XLB-02CL	1 unit	
4	DUBAI -SAS （United Arab Emirates)	XLB-06CL	1 unit	
5	MOHAMMED （OMAN)	XLB-06CL	1 unit	
6	WHITE WATER (BULGARIAN)	XLB-04CL	1 unit	
7	DUBAI-AL RAYAN （United Arab Emirates)	XLB-06CL,XLB-04CL	2 unit	
8	TIRTA PROJECT (INDONICIA)	XLB-06CL(1.5L)	1 unit	
9	DUBAI （United Arab Emirates)	XLB-06CL	2 unit	
10	KENYA	XLB-04L	1 unit	
11	GENESIS SDN.BHD (Malaysia)	XLB-08C,XLB-06CL	2 unit	
12	RINAJADI SDN. BHD DAILY JUICES AGENTCIES (Malaysia)	XLB-06CL	1 unit	
13	KHONKAEN PET Pack.,Co.Ltd (THAILAND)	XLB-04CL	1 unit	
14	SINGHA Corporation Co.,Ltd (THAILAND)	XLB-04CL	1 unit	

Partial overseas clients infomation			
Item No.	Customer Name	Machine No.	Qty
15	HUAYU-FILLING (THAILAND)	XLB-02C,XLB-04CL	21 unit
16	PALM OIL ENERGY INDUSTRY CO., LTD (THAILAND)	XLB-04CL	1 unit
17	PUWEI (THAILAND)	XLB-06CL	1 unit
18	ZHONGFU Packaging Inc. (Philippine)	XLB-06CL	1 unit
19	IFP FOOD AND DRRINKS, INC (Philippine)	XLB-06HL	1 unit
20	PT. SINAR MULTI PAKARINDO (Philippine)	XLB-04CL	4 unit
21	BURMA SIBERKEY INVEST (Vietnam)	XLB-06HL	1 unit
22	BD Thai Food & Beverage Ltd. (Bangladesh)	XLB-06CL,XLB-06HL	2 unit
23	TADZHIKISTAN TRADING CO.,LTD (Tadzhikistan)	XLB-04CL	1 unit
24	Advanced Foodstuff Ind. Co. (Iraq)	XLB-06CL	1 unit
25	AL WSAYA CO.,LTD (Iraq)	XLB-06C	1 unit
26	Babette Factory for CSD and Healthy Water (Iraq)	XLB-08C	1 unit
27	BAIGUANG(Iran)	XLB-08C	1 unit
28	ASEMAN SHOMA CO., LTD (Iran)	XLB-12CL	1 unit


Partial overseas clients infomation				
Item No.	Customer Name	Machine No.	Qty	
29	PRINT PLAST MACHINERY CO.,LTD (Iran)	XLB-06CL	2 unit	
30	SHATE TRADING CO.,LTD (Saudi Arabia)	XLB-06CL	1 unit	
31	AL-ZGHIR INDUSTERIAL SERVICE (Jordan)	XLB-06CL	1 unit	
32	Yemen Trading Co. (Yemen)	XLB-04CL	2 unit	
33	HUAYU (Syria)	XLB-06CL	2 unit	
34	COMPAGNIE BATOULA (Cameroon)	XLB-04CL	1 unit	
35	Source Volcanic (Cameroon)	XLB-02CL	1 unit	
36	ZHONGCHEN (Cameroon)	XLB-04HL	2 unit	
37	Pride Water Co. (Kenya)	XLB-02CL	2 unit	
38	KHOSHNOODY (Egypt)	XLB-02CL	4 unit	
39	Healthy herbal habits (Ghana)	XLB-04C	1 unit	
40	WILMAR AFRICA CO.,LTD (Ghana)	XLB-06CL	1 unit	
41	JIT BEVERAGE CO.,LTD (Sudan)	XLB-04HL	1 unit	
42	U-link (Finland)	XLB-04HL	1 unit	
43	PET CONTAINERS (PVT) LTD (SriLanka)	XLB-04C	1 unit	

Partial overseas clients infomation			
Item No.	Customer Name	Machine No.	Quantity
45	Venezuela Trading Co. (Venezuela)	XLB-06C	1 unit
46	CARIFRUITSV NV (Suriname)	XLB-06HL	1 unit
47	SOL IND E COM DE BEBIDAS (Brazil)	XLB-05HE	1 unit
48	LATCO BEVERAGES INDUSTRIA DE ALIMENTOS LTDA (Brazil)	XLB-08HF	1 unit
49	PT. MULTI SARANA PLASINDO (Indonesia)	XLB-06CL	1 unit
50	PHILIPPINES YAFANG (EXPORT)	XLB-06A	4 unit
51	BAOJIE COMPANY PROJECT (EXPORT)	XLB-06A	1 unit
52	FUOSHAN WEILI (HONKONG) CO.,LTD (EXPORT)	XLB-03C	7 unit
53	SHEN ZHEN RUNTONG IMPORTS & EXPORTS CO.,LTD	XLB-06C	1 unit
54	BEIJING LETIAN HUABANG CO.,LTD (Korea Lotte Group)	XLB-06CXL (5L)	1 unit
55	BURMA SILBER INVEST	XLB-12A	2 unit
56	JORDAN AL-ZGHIR INDUSTERIAL SERVICE	XLB-06C	1 unit
57	KHOSHNOODY (Egypt)	XLB-02A	3 unit
58	Healthy herbal habits (Ghana)	XLB-06A	1 unit
59	Advanced Foodstuff Ind. Co. (Iraq)	XLB-06CI	1 unit

Partial overseas clients infomation			
Item No.	Customer Name	Machine No.	Qty
61	BABTTLE FACTORY FOR CSD AND HEALTHY WATER (Iraq)	XLB-08C	1 unit
62	Smart Alternatives Co. Ltd (Iraq)	XLB-08C	2 unit
63	BAIGUAN (Iraq)	XLB-12C	1 unit
64	ASEMAN SHOMA CO.,LTD (Iraq)	XLB-06CL	2 unit
65	ZAMZAM IRAN CO.,LTD (Iraq)	XLB-06CL	2 unit
66	PRINT PLAST MACHINERY CO.,LTD (Iraq)	XLB-04CL	2 unit
67	SHA TRADING CO.,LTD (Saudi Arabia)	XLB-06CL	1 unit
68	BURMA SILBEIKEY INVERST (Vietnam)	XLB-12CL	1 unit
69	Sudan	XLB-04C	1 unit
70	KHONKAEN PET Pack.,Co.Ltd (Thailand)	XLB-04C	1 unit
71	SINGA Corporation Co.ltd (Thailand)	XLB-04C	1 unit
72	HUAYU-FILLING (Thailand)	XLB-02CL	24 unit
73	PALM OIL ENERGY INDUSTRY CO., LTD (Thailand)	XLB-06CL	1 unit
74	PUWEI (Thailand)	XLB-06CL	1 unit
75	BD Thai Food & Beverage Ltd. (Bangladesh)	XLB-08H	4 unit

Partial overseas clients infomation			
Item No.	Customer Name	Machine No.	Quantity
77	PGILIPPINES ZHONGFU CO.,LTD	XLB-03C	2 unit
78	MAGNATE FOOD AND DRINKS, INC. (Philippines)	XLB-06CL	1 unit
79	Genesis SDN.BHD (Malaysia)	XLB-08C	2 unit
80	RINAJADI SDN BHD DAILY JUICES AGETCIES (Malaysia)	XLB-06C	1 unit
81	PT. SINAR MULTI PAKARINDO (Indonesia)	XLB-06CL	7 unit
82	Finland	XLB-06CL	1 unit
83	SRILANKA	XLB-06HL	1 unit
84	COMPANIE BATOULA (Cameroon)	XLB-08C	1 unit
85	Source Volcanic (Cameroon)	XLB-06CL	1 unit
86	Kenya	XLB-04CL	1 unit
87	Yemen Trading Co.	XLB-08C	1 unit
88	GUJARAT ION EXCHANGE AND CHEMICALS LTD.(Yemen)	XLB-04C	1 unit
89	Turkey	XLB-04CL	1 unit

Partial overseas clients infomation			
Item No.	Customer Name	Machine No.	Quantity
91	HEFEI ZHONGCHEN LIGHT INDUSTRY MACHINERY CO.,LTD (EXPORT TANZANIA)	XLB-06CL	1 unit
92	FUOGANG HUAYUAN (EXPORT THAILAND)	XLB-06CL	2 unit
93	ZHANGJIAGANG HUIZHUO MACHINERY CO.,LTD (EXPORT ANGOLA)	XLB-06CL	1 unit
94	PT. SINAR MULTI PAKARINDO (INDONESIA)	XLB-06CL	3 unit
95	GUJARAT ION EXCHANGE AND CHEMICALS LTD(ETHIOPIA)	XLB-04CL	1 unit
96	PET CONTAINERS (PVT) LTD （SRILANKA）	XLB-04HL	1 unit
97	GUANGZHOU Tiantian MACHINERY CO.,LTD (to VIETNAM)	XLB-06CL	1 unit
98	JIANGSU QIANHE TRADE CO.,LTD (EXPORT DUBAI)	XLB-04CL	1 unit
99	ZLG (PVT)LTD (Zimbabwe)	XLB-08CF	1 unit
100	KAMA (ALTHIOPIA)	XLB-05CE	1 unit
101	HASAN (ALTHIOPIA)	XLB-06CL(5L)	2 unit
102	QATAR	XLB-06CL	1 unit
103	CLUB (INDONNICIA)	XLB-08CLF	3 unit

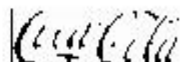
Partial overseas clients infomation				
Item No.	Customer Name	Machine No.	Quantity	
105	MERSHA (ALTHIOPIA)	XLB-05CE	1 unit	
106	LATCO (BRAZIL)	XLB-05HE	1 unit	
107	BAHRAIN	XLB-06CL	1 unit	
108	HUNGARY	XLB-06CL	1 unit	
109	AQUASWEET (PHILIPINES)	XLB-08CLF(1.5L)	1 unit	
110	HUAYU-FILLING MACHINERY CO.,LTD (Algeria)	XLB-06CE	1 unit	
111	SNACKINGS (Pvt.) Limited （SRILANKA)	XLB-06HL	1 unit	
112	AQUAMIST (KENYA)	XLB-02CL	1 unit	
113	DUBAI -SAS （United Arab Emirates)	XLB-06CL	1 unit	
114	MOHAMMED （OMAN)	XLB-06CL	1 unit	
115	WHITE WATER (BULGARIAN)	XLB-04CL	1 unit	
116	DUBAI-AL RAYAN （United Arab Emirates)	XLB-06CL	2 unit	
117	TIRTA PROJECT (INDONICIA)	XLB-06CL(1.5L)	1 unit	

Partial Turnkey Project infomation			
Item No.	Customer Name	Completed line	
1	Xian Zishui Spring Drinks Ltd	15000BPH Combi Water Line , 6000BPH CSD Line	
2	Henan Zhenbutong Industrial Ltd	18000BPH Combi Water Line	
3	Henan Zhongwo Beverages Ltd	12000BPH Hot Filling Line	
4	Shangxi Xunyang Tianyi Spring Beverages Ltd	24000BPH Combi Water Line （ 2 sets ）	
5	Gansu Xihe Water Group Ltd	10000BPH Combi Water Line , 900TPH 5 Gallon Filling Line	
6	Hebei Pugongying Food Ltd	10000BPH Energy Drink Filling Line	
7	Quanranquan Water and Beverages Ltd	24000BPH Combi Water Line	
8	Jiangsu Peiyu Beverages Ltd	40000BPH Combi Water Line	
9	ETHIOPIA	10000BPH Combi Water Line	
10	ETHIOPIA	15000BPH Combi Water Line	
11	ETHIOPIA	24000BPH Water Line	
12	MAGNATE FOOD AND DRINKS ,INC(Philippines)	18000BPH Water Line	

Partial Turnkey Project information

Item No.	Customer Name	Completed line
13	Water Genesis Sdn(Malaysia)	8000BPH Water Line
14	America	10000BPH Water Line
15	Mion for Mineral Water and Carbonated Beverages Co.,Ltd(Yemen)	24000BPH Combi Water Line
		12000BPH Combi Water Line
		6000BPH CSD Line
		4500BPH Hot Filling Juice Line

Supplier of Coca cola PET line since 2008



Coca-Cola (China) Beverages Ltd.

Nov. 26, 2008

Mr. Andy Huang:
Nanking MaoDing beverage CO.,Ltd.
NO.139,Yaoshang countryside,Xiaguan zone,Nanking,
Jiangsu, China

SUBJECT: Approval for Guangzhou Xili Machinery Co., Ltd. PET Line B

Dear Andy,

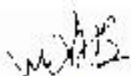
Based on June and October 2008 line capability study result, we are pleased to authorize Guangzhou Xili Machinery Co., Ltd. PET line B to produce The Coca-cola Company's Ice

dew PET product. This approval is based on following conditions:

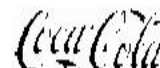
- 1) Package size: 550ml;
- 2) Blowing speed: 8000 bph.

Details please refer to the attachment.

Best regards,



K.M. Tsui
China Division QA Director



Coca-Cola (China) Beverages Ltd.

Guangzhou Xili Machinery Co., Ltd. PET Line B Capability Study Summary

Guangzhou Xili Machinery Co., Ltd. PET line B was installed in 2008 May. The first commissioning was conducted at the early of June after the test of mineral water had passed. The following is summary of the line capability study:

1 Basic information of the PET line

- 1) Subject: GZ Xili PET line for production of purified water products
- 2) Location: Guangzhou Xili Machinery CO., Ltd.
- 3) Processing Line: PET Line (Rated Capacity 8000 bph for 550ml)
- 4) Trial Run Date: Jun & Oct, 2008

2 Results of Production Running

(i)Product Net Content: Average = 550.02 ml;

3 Conclusion and Action

Since the Net Content fulfilled coca-cola Company requirement, GuangZhou Xili PET line is qualified to produce Coca-cola Ice-dew PET products.

Authorized by: K. M. Tsui

Date: Nov. 26 2008

Thanks for your watching!



Guangzhou Xili Machinery Co.,Ltd

Address:No.132,Chuangqiang Road,Zengcheng,Guangzhou,China.Zip:511340

Contacter:Williams Zhu

Mob/Whatsapp/Wechat:+8613085239015

Email:sales4@xilinear.cn

Web:www.xilinear.cn

