

CMCKUHNKE

---

# XTS Solutions





# Leading experts in double seam inspection

Problems with seams on a canning line can be costly and time-consuming. Seam inspection is critical for protecting yourself against leaking cans and ensuring the quality of your metal packaging. With a high-quality double seam inspection instrument, you can save time, hassle, costs, and protect yourself against unwanted product recalls.

At Industrial Physics, we're masters of double seam inspection – in fact, over twenty years ago, a brand in our family established itself as a world leader by inventing automatic double-seam inspection.

Our solutions are varied. Whether you're looking for destructive, non-destructive, or inline equipment, we can provide a solution to meet your needs. Everything from seam thickness, height, gap, through to countersink depth, overlap and more – we're here to help.

**World-class**  
non-destructive  
double-seam  
inspection solution

**Trusted** by beverage  
and food companies  
**across the globe**

**A wealth of knowledge and expertise**  
from our market leading product lines

**Unmatched range** of  
test and measurement  
solutions

**Global network** of factory  
certified in-house technicians  
and partners

# XTS Solutions

## Pioneers of double seam inspection test and measurement equipment.

**Our XTS Solutions are the world-leading, non-destructive test and measurement instruments that have revolutionized double seam inspection.**

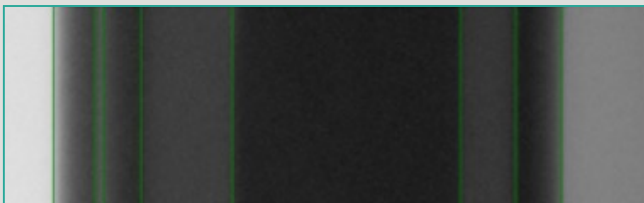
Our X-ray technology is unique, patented and innovative. Our technology has evolved over time to make sure we continuously meet and exceed the needs of our customers. In fact, our XTS Solutions have been trusted by filling companies around the world and are the go-to solution for any new lines or upgraded technology.

### Parameters measured

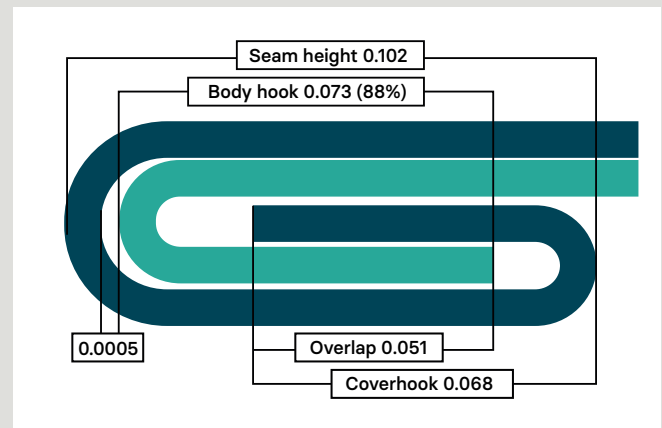
Our technology provides customers with a complete picture of their seam measurements, allowing you to assess: seam height, body hook, cover hook, overlap, seam gap, and % body hook butting.

Additionally, our radial measurements provide the highest accuracy in the way it measures seams and provides a means for wrinkle detection and tightness monitoring.

### X-ray technology using radial measurement method



X-Ray projection (radial)



Conversion of X-Ray image to "virtual seam"

# Benefits of XTS Technology

Our patented XTS technology offers an array of significant benefits for any filling line – enabling you to modernize and enhance your double seam inspections, reduce waste, optimize your time and have complete confidence in your measurement, data integrity, and quality assurance.



Saves Time & Money



100% Seam Safety



Increased Accuracy



Certification



Less Spoilage



Fully Automatic Version Available

# Our unique radial measurement

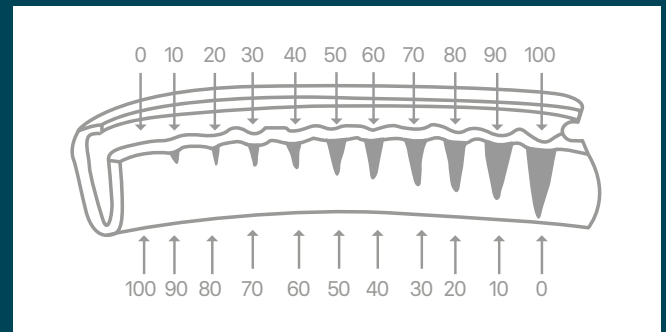
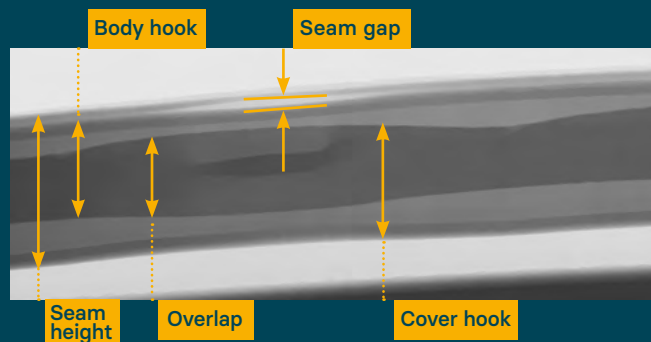
The AUTO-XTS and SEAMscan XTS III both use our unique radial measurement method, instead of a tangential approach.

Our distinctive, patented technology provides an objective measurement for seam analysis and allows users to assess wrinkle detection and monitor tightness. Alternative methods, such as tangential measurements, provide a very limited view of seams, whereas radial measurements provide greater information and detail.

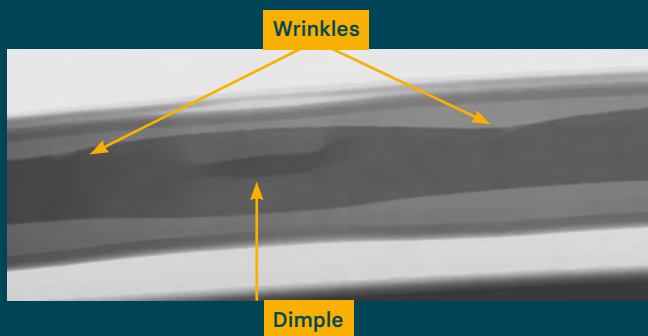
## Benefits of radial measurements:

- Single-point measurement provides greater accuracy for wrinkle detection and tightness monitoring
- No misleading views or predictive readings from tangential measurements
- Provides clear analysis in the quality of your seams
- Proven technology that has been continuously adapted to meet industry needs
- Trusted by companies around the world

## Radial measurement method

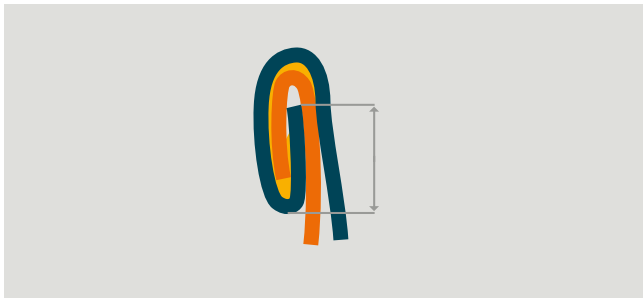


Wrinkle and tightness

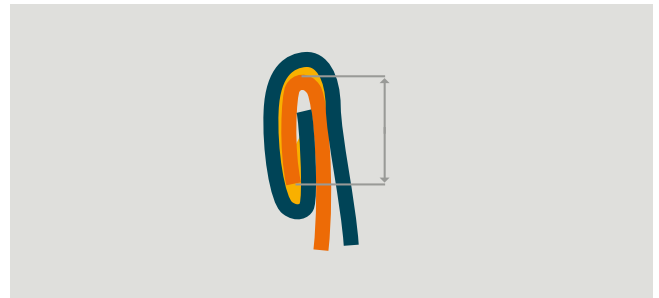


## Traditional Video Seam Images

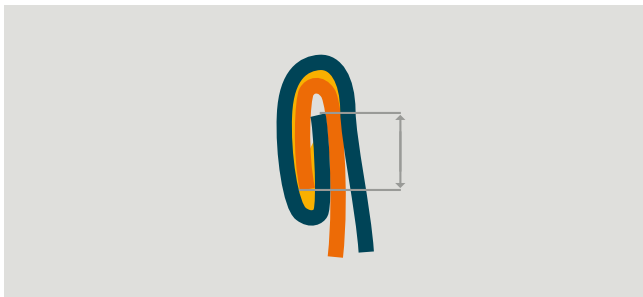
---



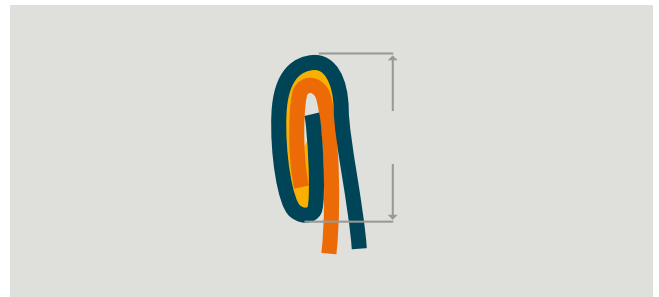
Cover End / Hook



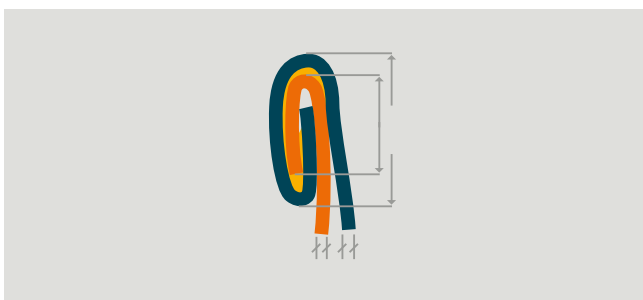
Body Hook



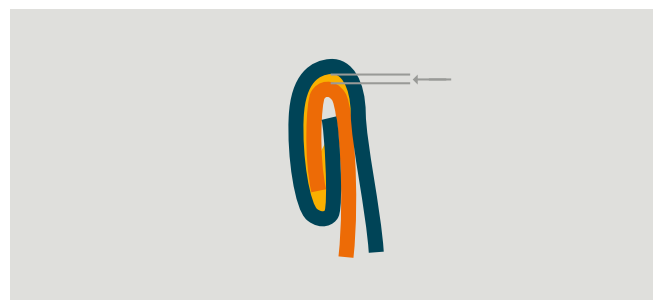
Overlap



Seam Height / Seam Length



Body Hook Butting



Seam Gap



# CMC-KUHNKE

## AUTO-XTS



The AUTO-XTS is available fully-automated through integration with line control or used as a standalone measurement system that provides non-destructive double seam inspection. The AUTO-XTS will increase the accuracy and speed of your inspection processes and reduce spoilage, saving you time and money.

### X-ray imaging with the AUTO-XTS

This test and measurement solution combines the internal x-ray seam measurements of the SEAMscan XTS with a second station for external measurements into one robust unit, providing faster inspection results and reduced labor costs.

The proven, patented technology of our zero-waste solution lets you measure cans in a fraction of the time.

### Versatile testing

The AUTO-XTS is a versatile testing unit that offers excellent safety features. Its automated process protects users from seam saws, metal burrs or seam teardowns. It allows you to assess: seam thickness, countersink depth, seam height, body hook, cover hook, overlap, seam gap, and % body hook butting.

Additionally, our unique radial measurement provides accurate, single-point measurement allowing users to assess wrinkle detection and monitor tightness.



Watch the  
AUTO-XTS  
in action

Height: 2245mm + 50mm adj. feet.  
Width: 2375mm. Depth: 1403mm.

### Technical features:

- Versatile test and measurement solution, capable of measuring a wide range of seam characteristics
- Automated robot handling system, for a faster and more efficient testing process
- Non-destructive testing
- Trusted by the top 10 global beverage giants for new lines and upgrades
- Visionary QC™ Pro SPC software collects data, which is instantly available for statistical analysis and presented in an easy-to-read and understand touch-screen format.





### Smart

- Full operator independence.
- Seam measurements are fully automatic.
- No need for prior canning experience.



### Savings

- Low power is needed for readings. The X-ray source has lower running costs compared to other suppliers.
- A smart investment - no labor costs, and non-destructive testing means that there is no material waste from the seam inspections.
- Supports towards sustainable initiatives.



### Safe

- Extremely safe choice for operations.
- Employees are not exposed to seam saws, metal burrs, or seam teardowns.
- The X-ray source is low power (through radial measurement technology).

# CMC-KUHNKE

## SEAMscan XTS III



This third generation of our popular SEAMscan XTS double seam inspection equipment is a stand-alone measurement system. The accurate gauge performs fast cross-sectional measurements and 360° tightness scans that reduce your labor costs.

It's a powerful double seam inspection tool that will accurately measure the double seam of any round can (seam height, body hook, cover hook, overlap, seam gap, and % body hook butting).

In addition, our unique radial measurement provides accurate, single-point measurement which allows users to assess wrinkle detection and tightness monitoring.

### Safe, fast and precise double-seam inspection

When you use the SEAMscan XTS III double seam inspection tool you'll be protected by excellent X-Ray-shielding (TÜV Rheinland tested and certified to < 0.1 mSv per year).

This latest model features improved handling and increased versatility and precision, enabled by new generation image processing.

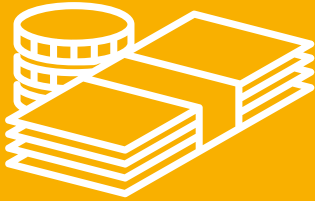


Watch the SEAMscan XTS III in action

Height: 850mm. Width: 1240mm (with open door 1650mm). Depth: 712mm.

### Technical features:

- Non-destructive testing
- Proven and patented operator independent technology
- Easy to use calibration / verification mode
- Faster and safer than conventional cross-sectional methods
- Comprehensive 360° measurement



- Beverage facility, after a change to non-destructive testing.
- 288 cans tested, 350 days per year.
- Customer valuation of the filled can: \$1.00 per can.

#### Cost Saving

**Total savings: \$100,000 per year**



- Beverage facility, after a change to non-destructive testing.
- 12 cans tested
- Traditional / destructive method: 35-50 minutes, operator dependent.

#### Time Saving

**Non-destructive method, using the SEAMscan XTS:  
15-20 minutes, operator independent**

# CMC-KUHNKE

## Visionary QC™ Software



When it comes to dynamic data collection and statistical production analysis software, Visionary QC™ quality control software offers you unrivaled insight into process control.

### Automatic email reports

Schedule inspection, seamer head, and other customizable trend reports to arrive in your inbox – sent via e-mail or FTP – with as much information as often as is required. You can even use our QC software to export, import, archive and generate reports without disrupting active inspections, and timely triggered by freely specified events.

### Gauge input plausibility limits

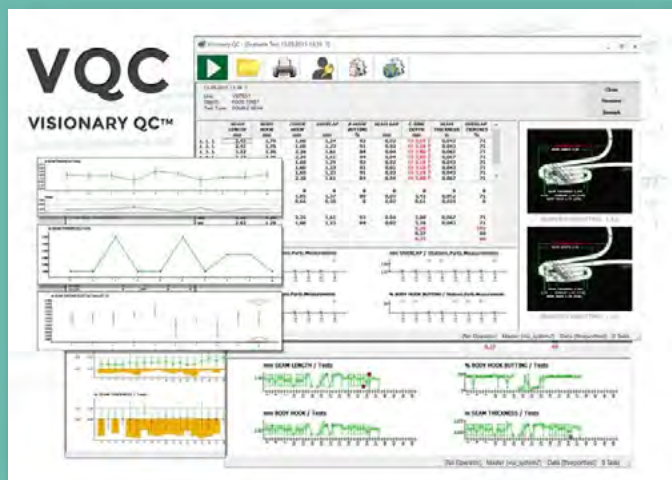
No more false readings with our visionary software! When gauges aren't used properly,

Visionary QC™ software alerts you and asks you to repeat the measurement, or it can do this independently by triggering events using our automatic gauges.

### Real-time SPC trend analysis

Our statistical process control software enables you to perform visionary plot trend analysis by seamer head on the inspection screen.

Operators and supervisors respond to out-of-spec readings armed with immediate historical data for that head.



### Technical features:

- Industry-leading software
- Straightforward QC software data entry
- Dashboard with real-time quality status overview
- Track trends and stats with SPC graphs
- Automatic email notification of any production problems Automatically trigger customized events and actions

# CMC-KUHNKE

## Combination Seam Gauge



The semi-automatic Combination Seam Gauge (CSG) gives you precise seam thickness and countersink depth measurements, including a 360° scan around the can.

### Multi-measurement seam gauge

**Seam thickness:** our seam gauge measures the total width of the entire double seam once curled and completed. This also includes 360° seam thickness measurements around the can.

**Countersink depth:** with our combination seam gauge you can instantly measure the total height of the entire double seam once curled and completed.

The Combination Seam Gauge rotates your cans effortlessly to find the right measurement angle. You can inspect a maximum of 50 points around a can and our seam gauge will even take multiple readings at the same time.

Using the easy-to-read and operate touchscreen digital display you'll quickly and accurately analyze the results from your combination seam gauge tests. The color display clearly shows you the test stage and can display your results in graph format.



### Technical features:

- Complete 360° seam thickness profile
- Automatic can rotation
- No change parts required
- Multiple simultaneous measurements
- Automatic data transfer option
- Fully-automatic version available
- Time saving combination seam gauge

# Support & Services





# Your Industry Experts

**We believe that supplying you with high quality testing instruments is only part of our job. Being fast, efficient, and truly reliable is critical when it comes to servicing the technology that keeps your business running.**

Wherever you are in the world, our experts are on hand to support your needs. From installation, through to calibration, repair, and preventative maintenance, we've got you covered.

That's because at Industrial Physics, we're not just suppliers, we are here for you as trusted partners.

Whatever your requirement may be, if you're looking for the highest quality of test and inspection solutions to ensure the quality of your products, the team at Industrial Physics are here to support you.

## Installation

Our installation team are here to ensure a smooth set-up and effective configuration of your instruments. And our trained technicians will ensure your operators are clued up on how to use the machine straight away.

The familiarization process can take place on-site or remotely – whatever you prefer! We can also arrange group training.

## Certificates of accreditation

As your global test and measurement partner, we hold many certificates of accreditation.

You can visit our website or speak directly to our team to find out more information about this.

## Extended Warranty

We have a host of services and extended warranty options available.

You can decide to select this when you purchase a new piece of equipment, or you can purchase this for equipment that is already in use – the choice is yours!

## Calibration, Repair & Preventative Maintenance

Whether it's a one-off repair, scheduled calibration, or preventative maintenance, our dedicated team is here to assist you.

You can rest assured that all instruments are calibrated using accurate testing equipment that meets accepted industry standards. Our preventative maintenance options allow you to minimize unplanned downtime and optimize the lifetime of your instrument. And of course, if you need a repair, you can reach out to us for emergency support.



## Get in touch

Find out more about how we can support your unique needs and get in touch today.

**Email: [info@industrialphysics.com](mailto:info@industrialphysics.com)**

**[industrialphysics.com](http://industrialphysics.com)**