



The choice of
top-tier brands



Winning the tethered cap
race with superior design,
functionality, and the best
consumer experience.



Greater value for gable top cartons
with pioneering cap systems



Small size
Large size



The easiest cap
to open with
lower torque

with the
SafeClickTM
TECHNOLOGY

A unique,
patented,
tamper-evident
solution

Explore our
Eco-Friendly
Cap System



Better solutions and a better future
for our planet



0% Littering
100% Responsible



Made from Bio-based PE
100% Renewable



100% Recyclable



Up to
30% Lighter

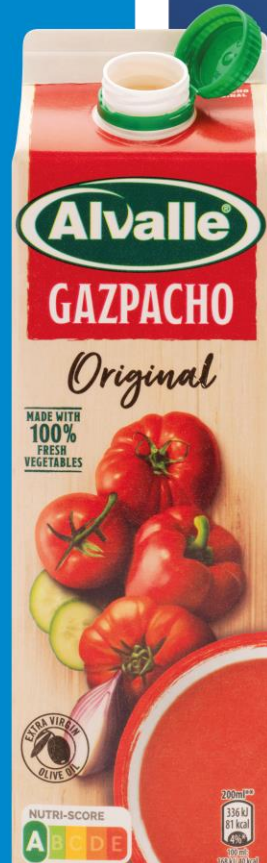


The food and beverage industry's choice for superior sustainable* packaging solutions.

7 out of 10 consumers prefer carton over plastic for its environmental benefits.

The most user-friendly caps, to fully unlock the potential of gable top carton packaging

- 1** 30% higher grip for improved handling
- 2** Easiest-to-open twist-off cap with lower torque
- 3** Distinct SafeClick signal for tamper-evidence
- 4** Rotatable cap on spout for customized pouring
- 5** Innovative hinge system with optimal 130° fixing point
- 6** Leak-proof closure mechanism



A complete end-to-end solution:

- 1** Gable-top cartons (Classic/Curve/Diamond/Sense)
- 2** CueCap® closures – both non-tethered and tethered
- 3** State-of-the-art gable-top filling machines
- 4** Full after-sales service and technical support