

**Pouch Packaging Machines
of the FME Series:
Compact flexibility.**



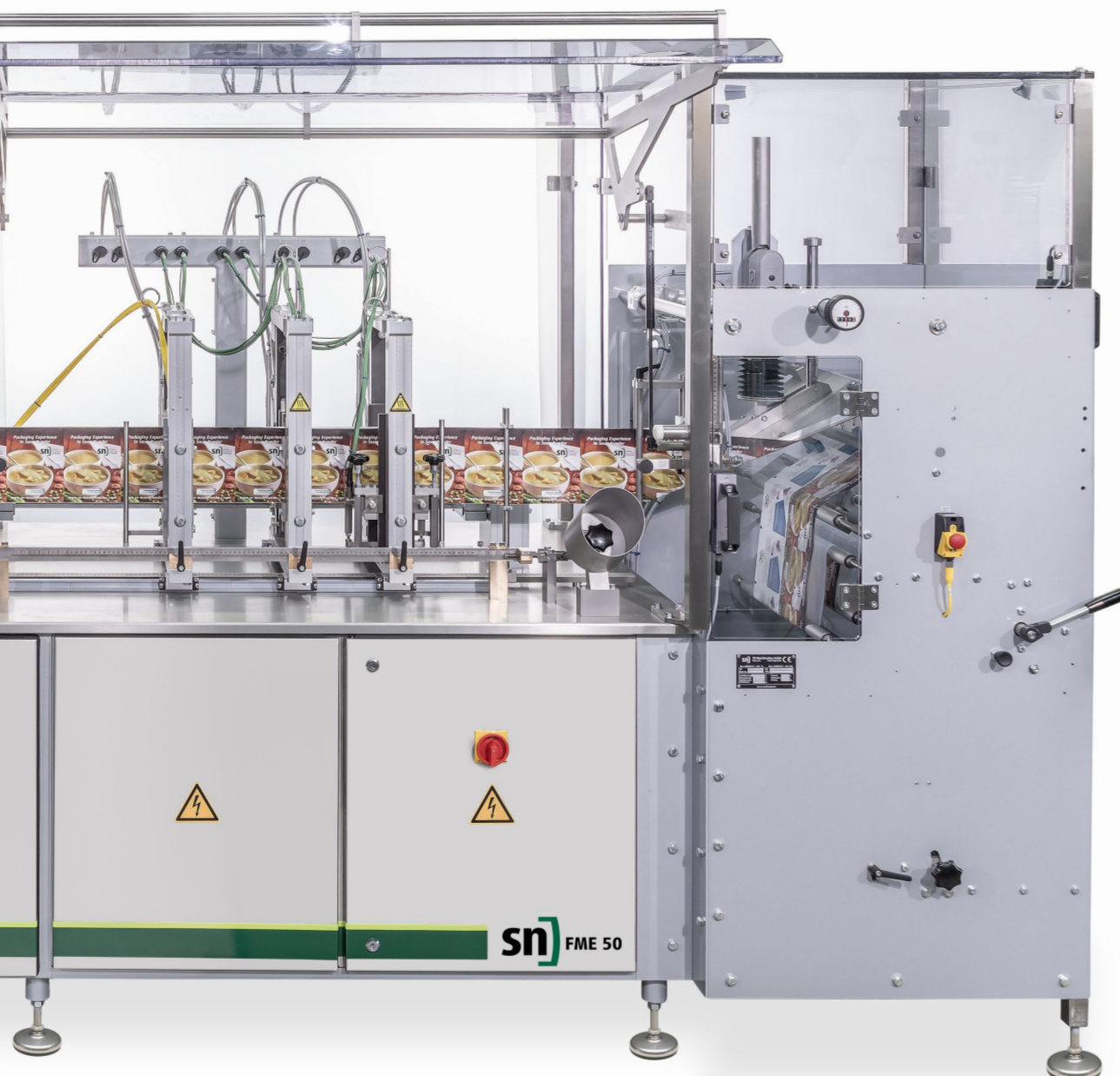
Entry into the world of horizontal FFS pouch packaging machines.

The horizontal form-fill-seal FME machine series enables the fast and easy entry into the world of flexible pouch packaging. If you mainly want to pack dry products, both the FME 50 and the duplex version FME 20 meet the highest standards with easy operation and a small footprint.



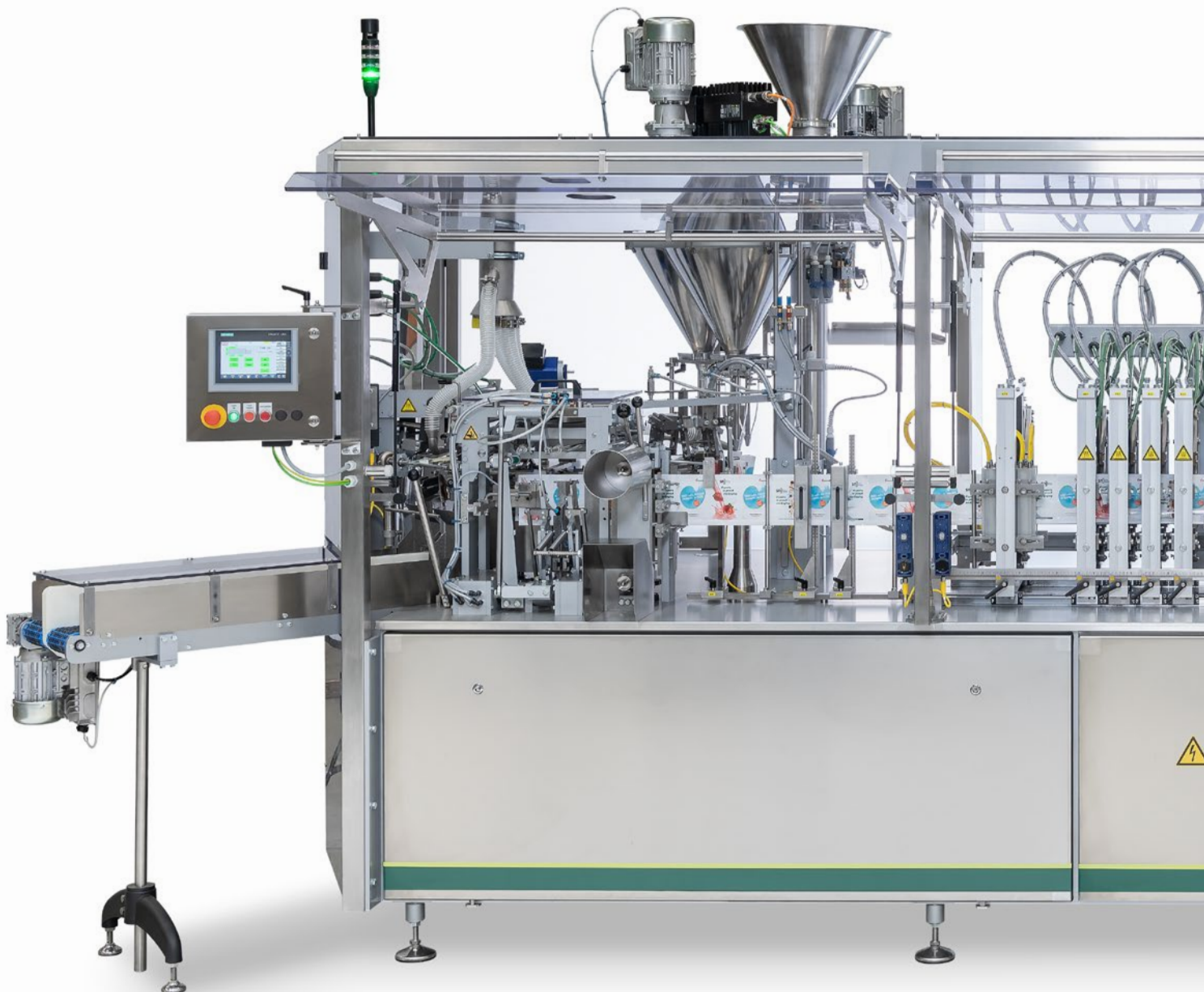
With the proven SN technology, the most important pouch types, such as stand-up pouches or four-side sealed pouches, are produced, filled, and sealed from the film reel on our rotary machines. The insertion of resealable systems, such as zippers is possible with both SN entry-level models, too.

In addition to conventional film material, recyclable films can be processed. The power consumption during operation of approx. 2 - 5 kWh in the standard execution guarantees low energy consumption.



Simple and perfect!

The FME machines are unique due to their compactness and convince with proven SN technology. The central pouch gripper adjustment on the rotary table, as well as the optimized height adjustment of the folding wedge, contribute to a reduction in format changeover times. This also greatly simplifies operations.



In addition, the new machine cladding allows easy access to all relevant machine components, supports the handling, cleaning, and maintenance of the machines. These modern pouch packaging machines with their integrated control cabinets are delivered as an all-in-one system.

The time required for commissioning by our technician is reduced to a maximum of one day. Alternatively, SN also offers commissioning via online support. With a pre-set format, the FME machines can even be used immediately after installation and connection at the production site; so "Plug & Play". This saves valuable time and money!



A variety of possibilities.

Just as varied as the products of our customers are the possibilities of our FME series to pack these products gently and safely. Despite their small size, both models offer flexibility for product packaging in a wide range of industrial sectors. And they do so at up to 100 cycles per minute - depending on the product and pouch size.

With the optionally available auger doser SDE, which was specially developed for this series, for example protein powder, cocoa powder, spices, sugar, and even chemical powders can be filled with the highest precision.

By using scales, all kinds of chunky goods, such as snacks, pet food, or household products, can be precisely filled. SN offers a synchronization for a multihead weigher including filling flaps and format parts. The scales themselves can be purchased from SN or provided by the customer. Other special features, such as product protection gassing, are also available.





SDE: Our solution for powdery products

From spices, herbs, and ready-meals to instant products and protein powders, our screw dosing system SDE, offers a simple, reliable, and precise dosing. A storage hopper and an infinitely variable stirrer are standard features of the SDE. The auger doser can be swiveled out for easier cleaning. The integrated height adjustment handwheel also ensures reliable reproducibility for recurring product changes.

Filling flaps for filling chunky products

There are countless variations of chunky and solid products, such as pre-packed or unpacked confectionery, snacks, nuts, granola, but also pet food, and noodles. From a dosing scale mounted above the FME, the product falls into the filling flaps at precisely the right time. These flaps dip far into the open pouch and thus ensure optimum filling. In addition to a vibrating unit and pouch support, a product protection gassing can also be used.





Multi-component dosing

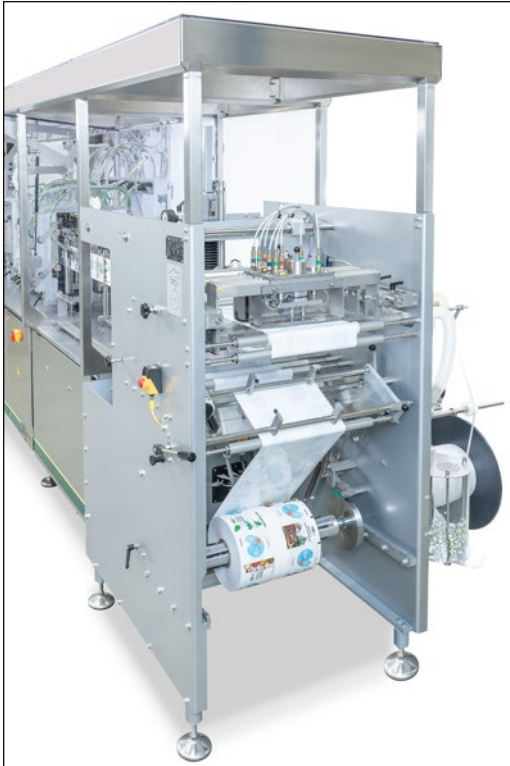
For products – such as granola mixtures – which consist of single components, our special dosing device offers a space-saving solution. Thanks to a smart pre-dosing system for the individual components, only one filling station is required on the FME pouch packaging machines. This makes it possible to use a further auger doser for filling an additional product. The complete dosing system is mounted on a mobile trolley and can therefore be used very flexibly. This also makes it very easy to clean.



Flexibility through and through

Naturally, all machines in the FME series offer the possibility of integrating multiple dosing systems at the same time. This is often the case when spice mixtures or so-called ready meals. For example, powdery products can be filled by the SDE auger doser and granulates or flaky ingredients can be precisely filled by the LRS tube slider.

The individual dosing units can be quickly and easily either swiveled out or installed on a trolley, making comfortable cleaning very easy.



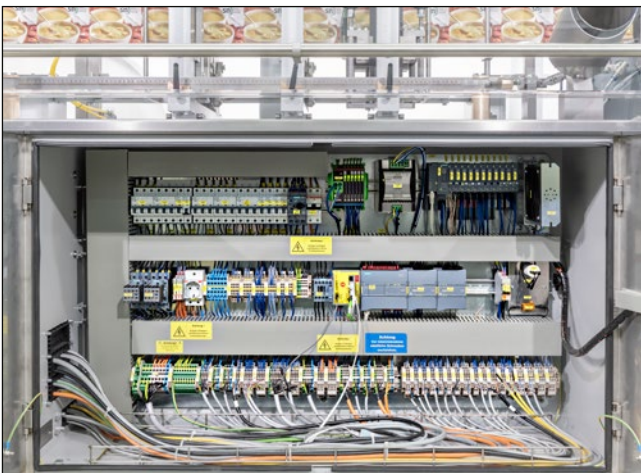
Easy change of film and zipper roll

SN technology: Well-engineered down to the last detail.

With SN's proven sealing technology, the FME pouch packaging machines reliably produce leak-proof and product-protecting pouches. Format changes of the sealing frames can be carried out in no time without tools and with process reliability.

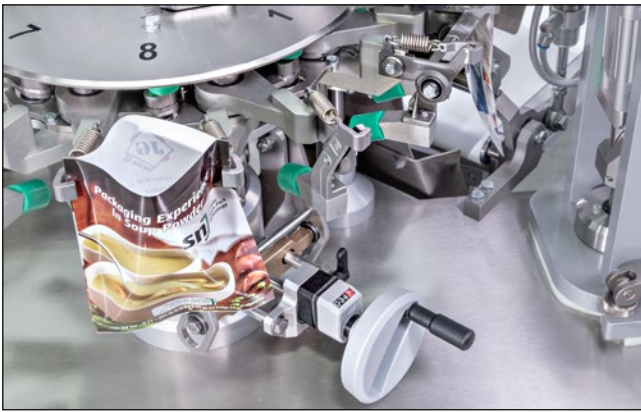


Sealing stations are easily adjustable



Integrated control cabinet

Thanks to the integration of the control cabinet into the machine body, the FME series is much more compact, easier to transport, and quicker to commission.



Central gripper adjustment in the rotary (manually)

Until now, the pouch grippers had to be adjusted one by one for a format change. With our central pouch gripper adjustment, the grippers can be adjusted simultaneously and tool-free. Thanks to fixed middles on the FME 20, there is no format changeover of the auger doser necessary.



The easily accessible rotary of a FME 20

With both the FME 50 and the FME 20, the rotary table is easily accessible and can be quickly adapted to individual requirements. With up to three possible dosing stations and various integrative dosing systems, both versions of the FME series offer outstanding flexibility.



Swing-out duplex auger doser (optional)



FME 20 - machine video



FME 50 - machine video



Technical details FME series

Specifications	FME 50 Simplex	FME 20 Duplex
Pouch size [mm]	Width 50 - 170 Length 70 - 210	Width 55 - 135 Length 70 - 210
Machine output [pouches/min.]	up to 80* (100*) * depending on filling characteristics and pouch size	up to 180*
Packing material	sealable film	
Design	for processing dry products	
Safety equipment	acc. to the international safety regulations e.g. CE , UL, OSHA	
Power consumption in operation [kWh]	approx. 2 ¹⁾	approx. 5 ¹⁾
Electricity supply	3 x 400/230V + N + PE, 50/60 HZ	
Voltage [V]	400 / 230 / 24	
Air consumption	approx. 200 - 300 NL/min., 6 bar ¹⁾	approx. 400 - 500 NL/min., 6 bar ¹⁾
Machine dimensions L x W x H [mm]	approx. 3.700 x 1.250 x 2.010 ¹⁾	approx. 4.450 x 1.663 x 2.550 ¹⁾

¹⁾ Depending on configuration. Technical modifications reserved.

Standard equipment

Single sealing frames - quick and easy format changeover
 Central gripper adjustment (manual operated)
 Decentral control structure for all motion drives
 Integrated machine cabinet
 Empty pouch discharge on station 8
 7" HMI touch panel
 Discharge conveyor belt 1.100 mm

Optional equipment

Stand-up pouch equipment
 Zipper integration
 Auger doser and/or multihead scale synchronization
 Double vertical sealing and cooling
 Printer synchronization
 Machine table elongation (e.g. for printer/labeler)
 Preparation for dust extraction
 Swiveable top sealing for easy maintenance
 (further options upon request)



www.sn-maschinenbau.de

SN Maschinenbau GmbH • Bahnstrasse 27 • 51688 Wipperfuerth/Germany

Phone: +49 2267 699-0 • Fax: +49 2267 699-500

Email: info@sn-maschinenbau.de

