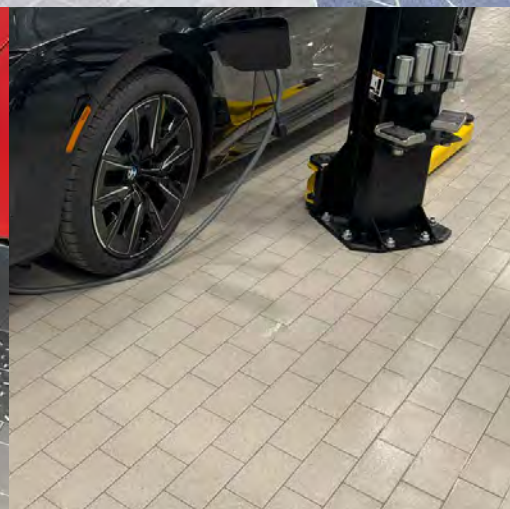
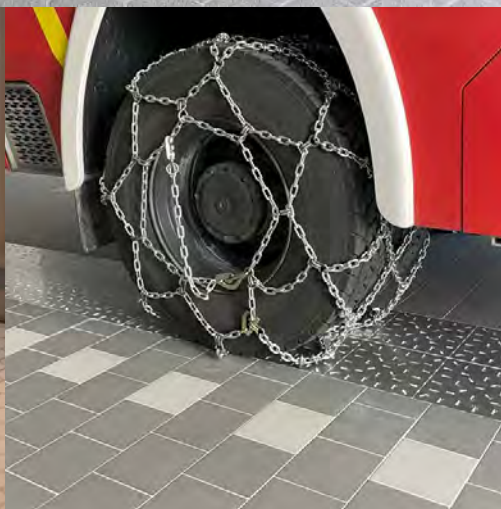


Fully Vitrified Tiles for Industrial Floors Product Range 2025



durable. hygienic. sustainable

High-Performance Industrial Flooring Solutions

Engineered for Demanding Environments. The Argelith product range offers a clear overview of our durable industrial tile solutions – covering a wide variety of sizes, colors, surfaces, specialty pieces, and technical details such as installation methods, slip-resistance ratings, and application areas. For over 150 years, Argelith has been synonymous with high-performance flooring that stands up to the toughest demands. Backed by state-of-the-art manufacturing, strict quality control, streamlined logistics, and knowledgeable customer support, we deliver flooring solutions that combine strength, hygiene, and long-term value.



Certified according to:
ISO 9001:2015
ISO 50001:2018



Page	3	Technical Data
Page	4	Areas of Application
Page	6	Surfaces
Page	7	Standard Colors
Page	8	Special Colors
Page	9	Decor Colors
Page	10	Hexagon Tiles Hexalith®
Page	11	Rectangular Tiles
Page	12	Square Tiles
Page	13	Wall Tiles
Page	14	Kerasig® Tiles
Page	15	Mars Red
Page	16	Accessories
Page	18	Installation Cross-Sections

Fully Vitrified Tiles – Made in Germany

Argelith fully vitrified tiles are engineered with safety in mind. Their textured surfaces help reduce the risk of slipping, while their dense, non-porous structure resists abrasion, dirt, and aggressive chemicals. Rigorous quality testing ensures every tile exceeds international performance standards – including those outlined in DIN EN 14411, Annex G. The result: an attractive, durable tile that performs reliably across a wide range of industrial environments. They proudly bear the „Made in Germany“ seal.

Why Choose Argelith Fully Vitrified Tiles?

✓ Built to Last

- Exceptionally durable and long-lasting
- Resistant to breakage, abrasion, and mechanical impact
- Withstands extreme temperatures and is fireproof
- Frost-resistant and suitable for indoor and outdoor use

✓ Designed for Demanding Environments

- Chemical-resistant: Withstands acids, alkalis, oils, and other aggressive substances
- Stain-resistant and easy to clean
- Slip-resistant surface options for improved safety
- Water absorption < 0.1% for high density and strength

✓ Hygienic & Sustainable

- Compliant with HACCP & EHEDG hygiene standards
- Free from pollutants and chemical emissions
- Odor-neutral and 100% recyclable

✓ Precision & Practicality

- High dimensional accuracy (± 0.5 mm)
- Slope creation is easily achievable
- Simple to repair: Tiles can be cut out and replaced cleanly

Technical Data

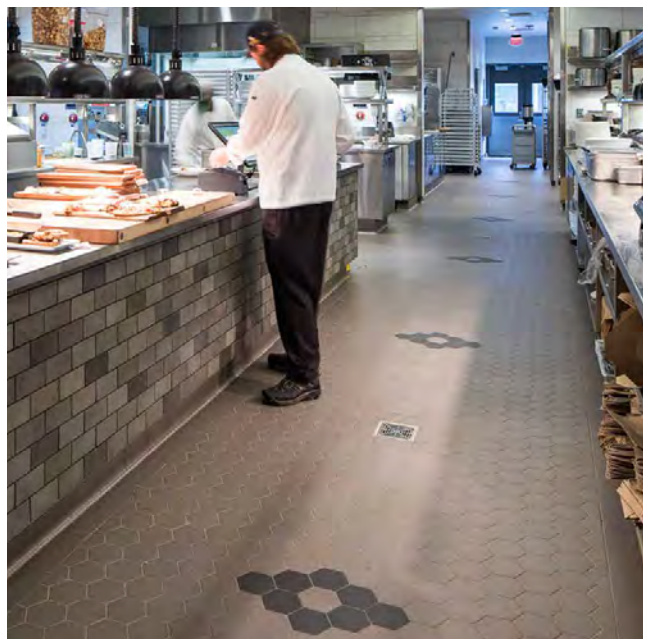
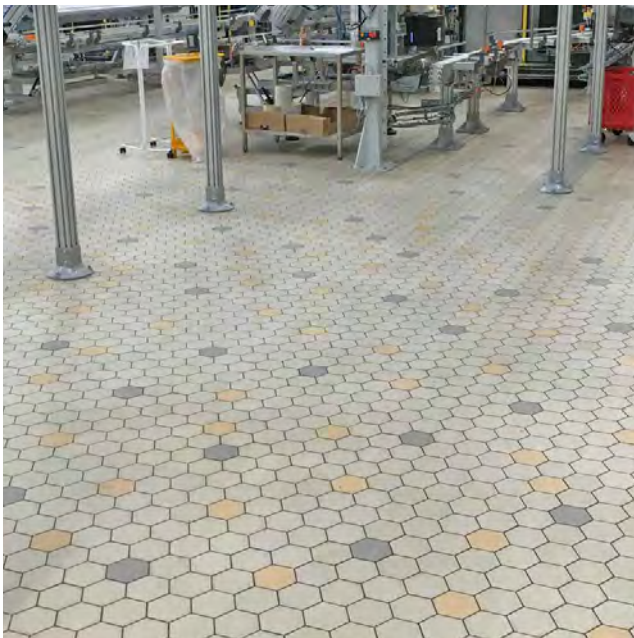
Example Hexalith® – Hexagonal Tile, 18 mm

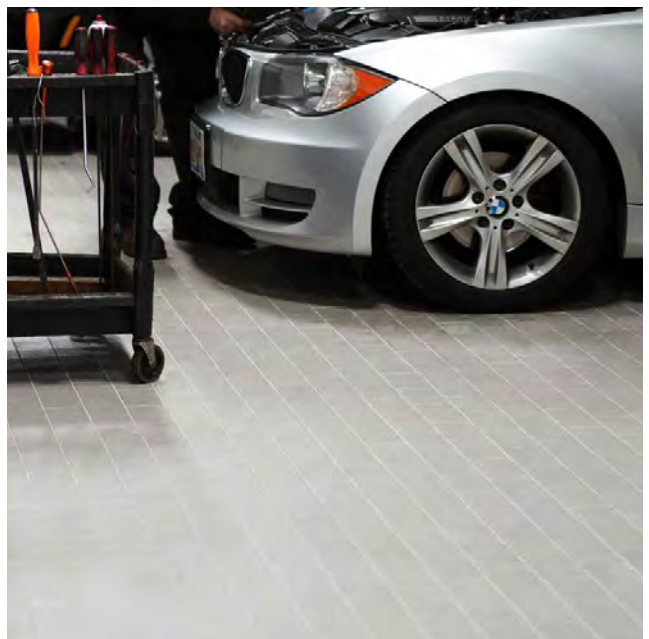
Property	Value
Dimensional Tolerance	± 0.2 mm length & width
Thickness Tolerance	-0.4 mm / -0.3 mm
Surface Quality	Nearly 100% free of visual defects
Water Absorption	0.01% by mass
Modulus of Rupture	65 N/mm ²
Breaking Strength (≥ 7.5 mm thickness)	12,897 N
Deep Abrasion Resistance	133 mm ³
Thermal Shock Resistance	Pass
Frost Resistance	Pass
Resistance to Household Chemicals & Pool Salts	Class A
Resistance to Acids and Alkalis (Low / High Conc.)	Class LA / Class HA
Stain Resistance (Green Cr, Iodine, Olive Oil)	Class A

All testing performed per DIN EN 144 11 - App.G specifications. Most recent test reports are available upon request.

Built to Handle the Pressure

Whether it's a food processing plant, automotive workshop, laboratory, chemical facility, or airplane hangar, industrial environments demand flooring that performs under pressure. Requirements for slip resistance, hygiene, and load-bearing capacity can vary widely – and Argelith delivers on all fronts. Our fully vitrified tiles provide a strong, hygienic, and long-lasting foundation for even the most demanding applications.





mv-tec® Performance Surface Finish on Argelith Fully Vitrified Tiles

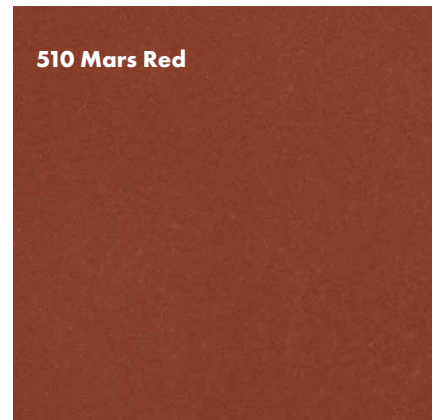
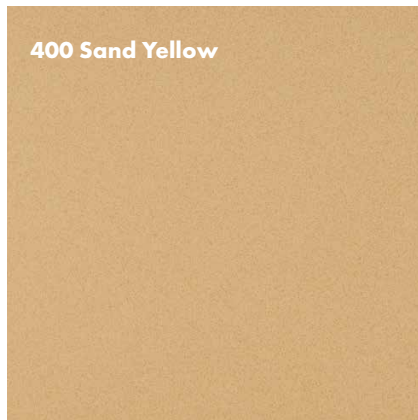
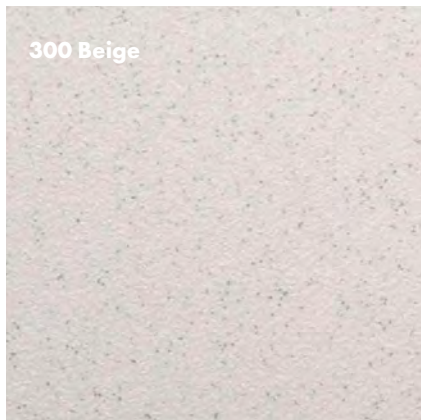
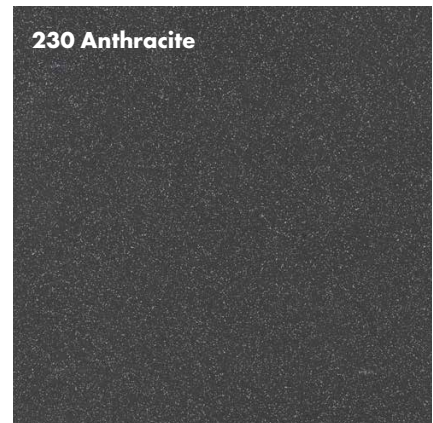
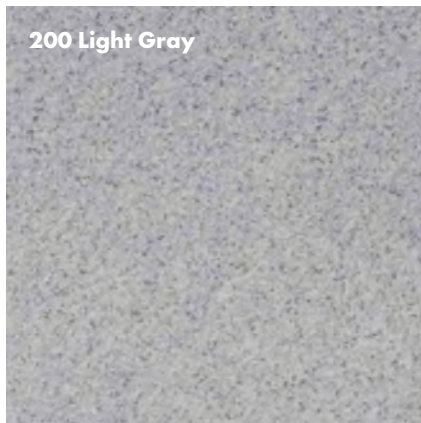
Argelith fully vitrified tiles are unglazed and feature the innovative mv-tec® performance surface finish – a unique combination of outstanding cleaning properties and uncompromising slip resistance. The surface finish consists of finely ground, transparent hard materials that are fused to the tile surface in the form of glass frits. This special coating creates a permanent protective layer that prevents dirt, germs, and bacteria from penetrating the surface, making cleaning significantly easier and increasing the tiles' durability. In addition, Argelith fully vitrified tiles are resistant to temperature fluctuations, making them ideal for steam cleaning and ensuring their performance for many years to come. Cleaning requirements can vary depending on the area of use. The innovative surface finish not only enables effortless daily cleaning but also supports the implementation of a well-designed hygiene concept, ensuring floors remain in optimal condition at all times. Do you need support with your daily maintenance cleaning, advice on initial cleaning for your new building, or have general questions about the care of our products? Argelith works closely with FILA Solutions S.p.A. SB, a leading supplier of cleaning and maintenance products for ceramic floors. Together, we provide comprehensive solutions to preserve the longevity of your tiles and maintain the value of your floors over the long term.



mvtec®

Color Options Built for Performance

Our tiles are available in six standard colors – Titan Gray, Light Gray, Anthracite, Beige, Sand Yellow, and Mars Red – selected to meet the functional and aesthetic needs of demanding industrial spaces. In addition to our standard range, we offer numerous special colors and custom tones to suit your project's unique requirements.



Surface Finishes for Every Application: From smooth finishes to knobbed profiles, Argelith offers six surface options designed to meet a range of slip-resistance and cleaning requirements.



R10 Smooth

R11/R12

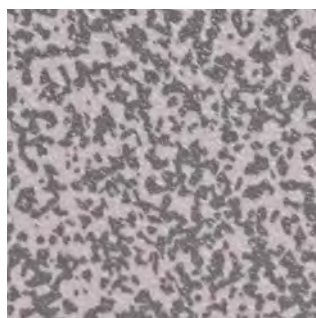
R13

R12 V06 / R13 V10

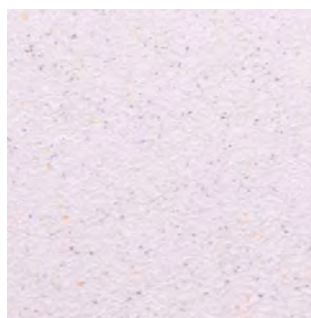
Special Colors



250 Atlanta



251 Gray Porphyry



310 Arkona White



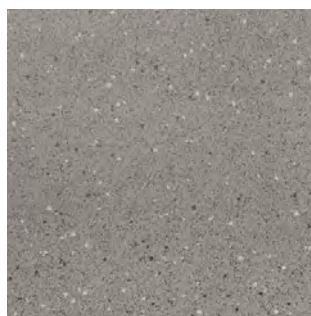
410 Cream Yellow



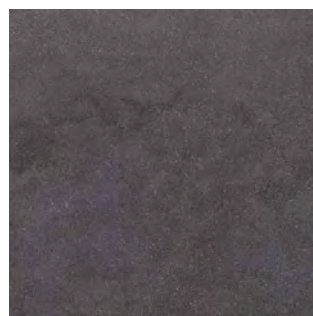
600 Cora



610 Gitta



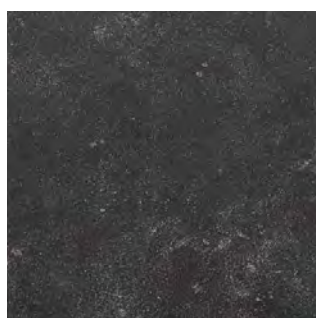
614 Miha



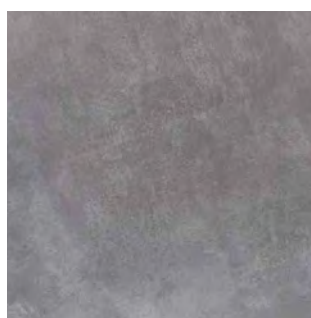
737 Beton Gray



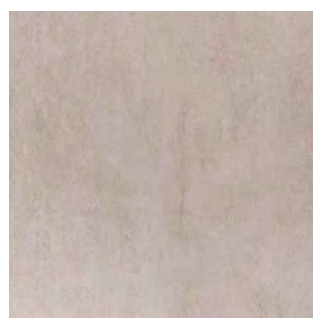
738 Greige



739 Kempten



742 Gronau



755 Vanessa



LOOKING FOR A CUSTOM COLOR OR PATTERN?

Argelith fully vitrified tiles combine the proven performance of industrial ceramic flooring with the creative flexibility of advanced digital printing. From custom colors to unique visual effects, we can help bring your design vision to life – without compromising durability.

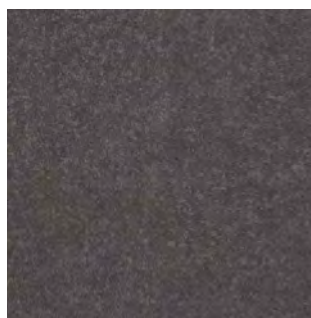
Decor Colors



07 Cemento Moderato



02 Cemento Forte



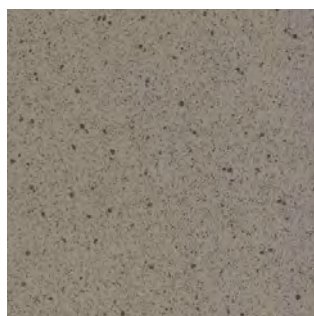
16 Cemento Nardo



03 Arenaria Nero



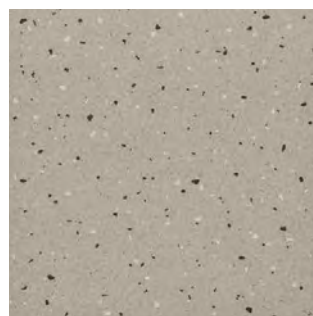
01 Terrazzo Nero



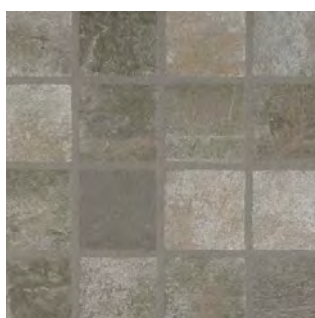
15 Tempesta Grigio



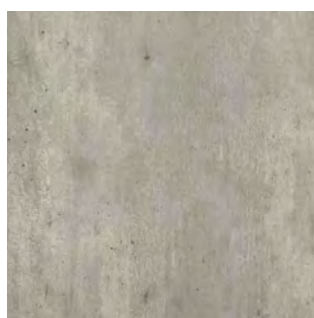
12 Tempesta Libero



13 Terrazzo Grigio



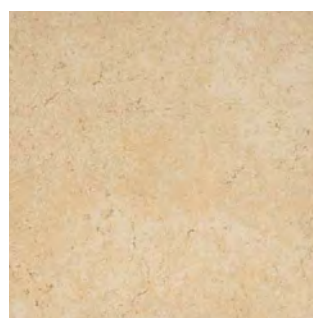
05 Mosaico



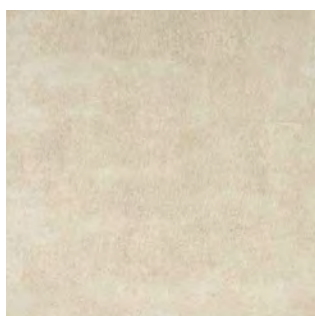
06 Legno Grigio



08 Cemento Roccia



09 Arenaria Fine



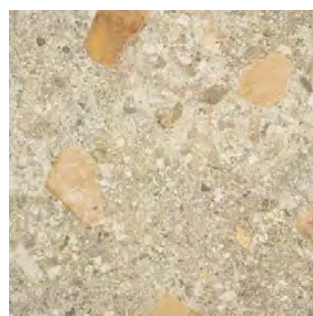
04 Cemento Chiaro



10 Terrazzo Crema



11 Terrazzo Sabbia

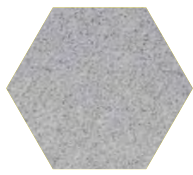


14 Fantasia Grande

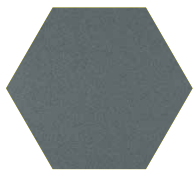
Custom Designs Without Compromise

With minimum order quantities, Argelith can produce custom colors and designs tailored to your exact specifications. Our in-house raw material processing and state-of-the-art digital printing technology allow for nearly unlimited design possibilities – without sacrificing strength or performance. Backed by over 150 years of experience, we manufacture exceptionally durable flooring that meets the highest aesthetic and functional standards. Single-batch production is available for quantities up to 10,000 square meters (≈107,600 sq ft).

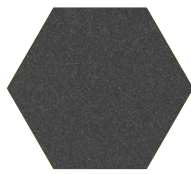
Hexagon Tiles Hexalith®



200 Light Gray



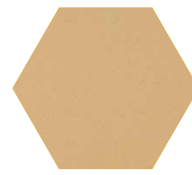
220 Titan Gray



230 Anthracite



300 Beige



400 Sand Yellow



510 Mars Red

Hexagon 108 x 125 mm

Color	Thick- ness	Surface (Slip Resistance)					Require- ment Pieces/ sqm (incl. Joint)	Content Pieces/ Box	Content sqm/ Pallet	Weight kg/sqm	Weight kg/ Pallet
200 Light Gray	15 mm	–	R11	–	–	–	97.5	48	31.01	35.20	1,092
	18 mm	R10	R11	R12	R12/V06	R13/R13 V10 on Request	96.5	40	26.11	41.30	1,079
220 Titan Gray	15 mm	–	R11	–	–	–	97.5	48	31.01	35.20	1,092
	18 mm	–	R11	–	–	–	96.5	40	26.11	41.30	1,079
230 Anthracite	15 mm	–	R11	–	–	–	97.5	48	31.01	35.20	1,092
	18 mm	–	R11	–	–	–	96.5	40	26.11	41.30	1,079
300 Beige	15 mm	–	R11	–	–	–	97.5	48	31.01	35.20	1,092
	18 mm	R10	R11	R12	R12/V06	R13/R13 V10 on Request	96.5	40	26.11	41.30	1,079
400 Sand Yellow	18 mm	–	R11	–	–	–	96.5	40	26.11	41.30	1,079
510 Mars Red	18 mm	–	R11	–	–	–	96.5	40	26.11	41.30	1,079

Other colors and surfaces on request.
Possible color deviations are due to printing technology.

Hexalith® – Engineered for Food and Beverage Production

Our Hexalith® tile is a fully vitrified hexagonal tile designed for heavy-duty wet and dry areas in industrial and commercial settings – especially in food production environments. The hexagon shape makes it easier to install around slopes and drains, helping create seamless floor transitions and consistent joint lines for a hygienic, easy-to-clean surface.

The sharp-edged design supports tight, uniform joints, while the tile's textured surface helps reduce both equipment and footfall noise – making for a quieter, more comfortable work environment.

Finishing Tiles



Point Finishing Tiles



Blunt Finishing Tiles

Finishing Tiles	Requirement Pieces/lm (incl. Joint)
Point	9.5
Blunt	4.5

Further Accessories, see Page 16/17

Rectangular Tiles



200 Light Gray



220 Titan Gray



230 Anthracite



300 Beige



400 Sand Yellow



510 Mars Red

Rectangular 198 x 98 mm

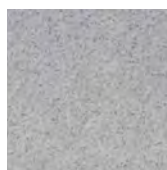
Color	Thick- ness	Surface (Slip Resistance)					Require- ment Pieces/ sqm (incl. Joint)	Content Pieces/ Box	Content sqm/ Pallet	Weight kg/sqm	Weight kg/ Pallet
200 Light Gray	15 mm	R10	R11	R12	R12/V06	–	50	26	31.20	32.5	1,014
	18 mm	R10	R11	R12	R12/V06	R13/R13 V10 on Request	50	22	26.40	40	1,056
220 Titan Gray	15 mm	R10	R11	R12	R12/V06	–	50	26	31.20	32.5	1,014
	18 mm	R10	R11	R12	R12/V06	–	50	22	26.40	40	1,056
230 Anthracite	15 mm	R10	R11	R12	R12/V06	–	50	26	31.20	32.5	1,014
	18 mm	–	R11	R12	R12/V06	–	50	22	26.40	40	1,056
300 Beige	15 mm	–	R11	–	–	–	50	26	31.20	32.5	1,014
	18 mm	R10	R11	R12	R12/V06	R13/R13 V10 on Request	50	22	26.40	40	1,056
400 Sand Yellow	15 mm	–	R11	–	–	–	50	26	31.20	32.5	1,014
	18 mm	–	R11	–	–	–	50	22	26.40	40	1,056
510 Mars Red	15 mm	R10	R11	R12	R12/V06	–	50	26	31,20	32,5	1.014
	18 mm	R10	R11	R12	R12/V06	–	50	22	26,40	40	1.056

Rectangular 240 x 115 mm

300 Beige	15 mm	–	R11	–	–	–	33	26	35.45	31	1,099
	18 mm	–	R11	–	–	–	33	22	30	37	1,110
400 Sand Yellow	15 mm	–	R11	–	–	–	33	26	35.45	31	1,099
	18 mm	–	R11	–	–	–	33	22	30	37	1,110
510 Mars Red	15 mm	R10	R11	R12	–	–	33	26	35.45	31	1,099
	18 mm	R10	R11	R12	–	–	33	22	30	37	1,110

Other colors and surfaces on request.
Possible color deviations are due to printing technology.

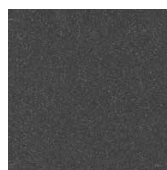
Square Tiles



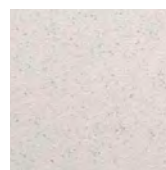
200 Light Gray



220 Titan Gray



230 Anthracite



300 Beige

Square 198 x 198 mm

Color	Thick-ness	Surface (Slip Resistance)				Require-ment Pieces/sqm (incl. Joint)	Content Pieces/Box	Content sqm/Pallet	Weight kg/sqm	Weight kg/Pallet
200 Light Gray	15 mm	R10	R11	R12	R12/V06	25	13	31.20	33.5	1,045
	18 mm	R10	R11	R12	R12/V06	25	11	26.40	40	1,056
220 Titan Gray	15 mm	R10	R11	R12	R12/V06	25	13	31.20	33.5	1,045
	18 mm	R10	R11	R12	R12/V06	25	11	26.40	40	1,056
230 Anthracite	15 mm	R10	R11	R12	R12/V06	25	13	31.20	33.5	1,045
	18 mm	R10	R11	R12	R12/V06	25	11	26.40	40	1,056
300 Beige	15 mm	R10	R11	R12	–	25	13	31,20	33,5	1.045
	18 mm	–	R11	–	–	25	11	26,40	40	1.056

Square 298 x 298 mm

200 Light Gray	15 mm	R10	R11	–	–	11	9	32.73	33	1.080
220 Titan Gray	15 mm	R10	R11	–	–	11	9	32.73	33	1.080
230 Anthracite	15 mm	R10	R11	–	–	11	9	32.73	33	1.080
300 Beige	15 mm	R10	R11	–	–	11	9	32.73	33	1.080

Also available in 12 mm

Square 398 x 398 mm

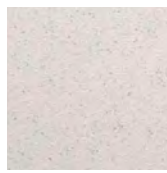
200 Light Gray	15 mm	R10	R11	–	–	6.3	5	22,22	34	755
230 Anthracite	15 mm	R10	R11	–	–	6.3	5	22,22	34	755

Other colors and surfaces on request.
Possible color deviations are due to printing technology.

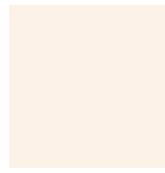
Wall Tiles



200 Light Gray



300 Beige



311 Uni White



207 Uni Gray

Slim Profile. Strong Performance. Wall and Floor Tiles Built to Last

Square 198 x 198 mm

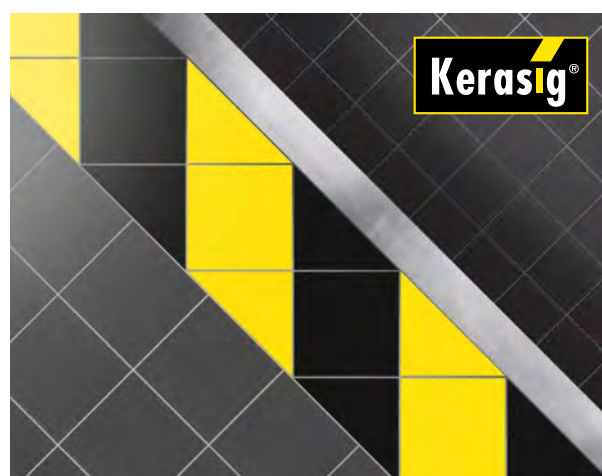
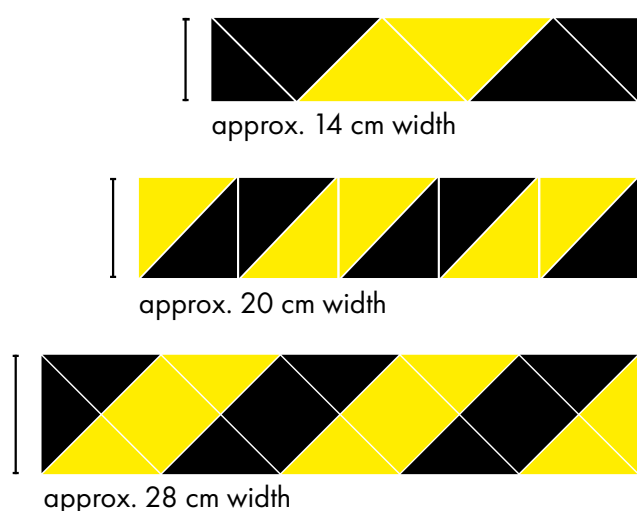
Color	Thickness	Surface (Slip Resistance)	Require- ment Pieces/sqm (incl. Joint)	Content Pieces/ Box	Content sqm/ Pallet	Weight kg/ sqm	Weight kg/ Pallet
200 Light Gray	9 mm	R10	25	22	52,80	20	1.056
300 Beige	9 mm	R10	25	22	52,80	20	1.056
311 Uni White	9 mm	RG	25	22	52,80	20	1.056
207 Uni Gray	9 mm	RG	25	22	52,80	20	1.056

Other colors and surfaces on request.
Possible color deviations are due to printing technology.

Kerasig® – Safety That Stays in Place Permanent Markings for Industrial Flooring Systems

Kerasig® is Argelith's integrated tile solution for long-lasting floor markings in industrial environments. Unlike painted lines or adhesive tapes, Kerasig® is built directly into the tiled floor– eliminating wear, peeling, or fading over time. The result is a seamless, permanent marking solution that stays in place for decades, even under heavy mechanical stress. Kerasig® tiles offer the same strength, chemical resistance, and slip-resistance as our full tile range and are ideal for defining hazardous zones, walkways, and equipment areas.

Available in three standard widths – approximately 14 cm, 20 cm and 28 cm – and in thicknesses of 15 mm and 18 mm with R11 slip-resistance option. Tiles can be pre-cut or trimmed to size on site as needed.



Width (Laid)	Thickness	Surface (Slip Resistance)	Pieces /Ln. Ft. Full Tiles (incl. Joint)	Pieces/Ln. Ft. Half Tiles (incl. Joint)
approx. 14 cm	15 mm	R 11	–	8
	18 mm	R 11	–	8
approx. 20 cm	15 mm	R 11	–	10
	18 mm	R 11	–	10
approx. 28 cm	15 mm	R 11	4	8
	18 mm	R 11	4	8

Other widths can be produced by combination.

Mars Red



Classic Elegance, modern Durability: Argelith Mars Red Tiles

Product	Format	Thick- ness	Surface (Slip Resistance)				Require- ment Pieces/ sqm (incl. Joint)	Content Pieces/ Box	Content sqm/ Pallet	Weight kg/sqm	Weight kg/ Pallet
Hexagon Tiles	108 x 125 mm	18 mm	–	R11	–	–	96.5	40	26.11	41.30	1,079
Rectangular Tiles	198 x 98 mm	15 mm	R10	R11	R12	R12/V06	50	26	31.20	32.5	1,014
	198 x 98 mm	18 mm	R10	R11	R12	R12/V06	50	22	26.40	40	1,056
Square Tiles	240 x 115 mm	15 mm	R10	R11	R12	–	33	26	35.45	31	1,099
	240 x 115 mm	18 mm	R10	R11	R12	–	33	22	30.00	37	1,110

Other colors and surfaces on request.
Possible color deviations are due to printing technology.

Argelith's Mars Red tile captures the rich, natural tone of traditional red clinker tiles – without the pink or brown hues often seen in imitations. Inspired by the original red-burning clay from Wehrendorf, Mars Red delivers the classic look with all the performance advantages of fully vitrified tile: extremely low water absorption, high breaking strength, chemical resistance, durability, and easy maintenance.

For projects requiring a traditional aesthetic, Mars Red is also available upon request with a smooth surface finish that mirrors the appearance of conventional clinker tiles.

Accessories



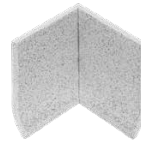
Cove Base Skirting
vertical



Cove Base Skirting
horizontal



External Angled
Corner



Internal Angled
Corner



External Corner



Internal Corner

Cove Base Skirting



200 Light Gray



220 Titan Gray



230 Anthracite



300 Beige



400 Sand Yellow



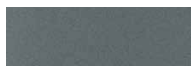
510 Mars Red

Color	Format	Thick- ness	Requirement Pieces/sqm (incl. Joint)	Content Pieces/ Box	Content sqm/Pallet	Weight kg/sqm	Weight kg/Pallet
200 Light Gray	198 x 110 mm	10 mm	5	25	375	2.56	960
	198 x 110 mm	15 mm	5	15	225	3.70	832
	198 x 110 mm	18 mm	5	15	180	4.50	810
220 Titan Gray	198 x 110 mm	10 mm	5	25	375	2.56	960
	198 x 110 mm	15 mm	5	15	225	3.70	832
	198 x 110 mm	18 mm	5	15	180	4.50	810
230 Anthracite	198 x 110 mm	10 mm	5	25	375	2.56	960
	198 x 110 mm	15 mm	5	15	225	3.70	832
	198 x 110 mm	18 mm	5	15	180	4.50	810
300 Beige	198 x 110 mm	10 mm	5	25	375	2.56	960
	198 x 110 mm	15 mm	5	15	225	3.70	832
	198 x 110 mm	18 mm	5	15	180	4.50	810
400 Sand Yellow	198 x 110 mm	10 mm	5	25	375	2.56	960
	198 x 110 mm	18 mm	5	15	180	4.50	810
510 Mars Red	198 x 110 mm	10 mm	5	25	375	2.56	960
	198 x 110 mm	15 mm	5	15	225	3.70	832

Internal and External Angled Corner



200 Light Gray



220 Titan Gray



230 Anthracite



300 Beige



400 Sand Yellow



510 Mars Red

Internal and External Corner

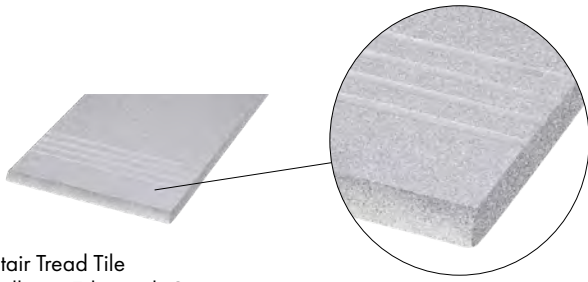


200 Light Gray



300 Beige

Accessories



Stair Tread Tile
Bullnose Edge with Grooves



Bullnose/Strip Tile

Stair Tread Tiles



200 Light Gray



220 Titan Gray



230 Anthracite

Farbe	Format	Thick- ness	Surface (Slip Resistance)		Require- ment Pieces/ sqm (incl. Joint)	Content Pieces/ Box	Content sqm/ Pallet	Weight kg/sqm	Weight kg/Pallet
200 Light Gray	298 x 298 mm	15 mm	–	R10	3.33	11	125.53	8.5	1,067
220 Titan Gray	298 x 298 mm	15 mm	–	R10	3.33	11	125.53	8.5	1,067
230 Anthracite	298 x 298 mm	15 mm	–	R10	3.33	11	125.53	8.5	1,067

Bullnose/Strip Tiles



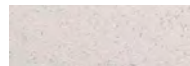
200 Light Gray



220 Titan Gray



230 Anthracite

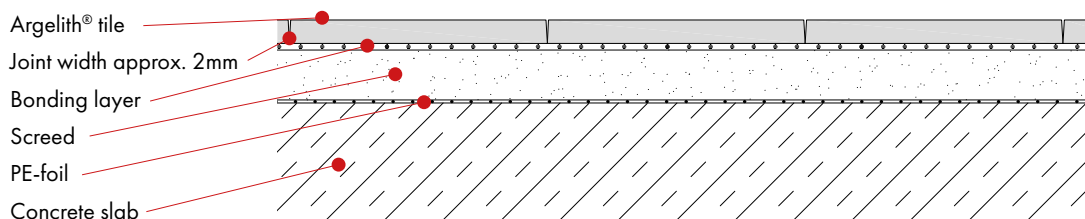


300 Beige

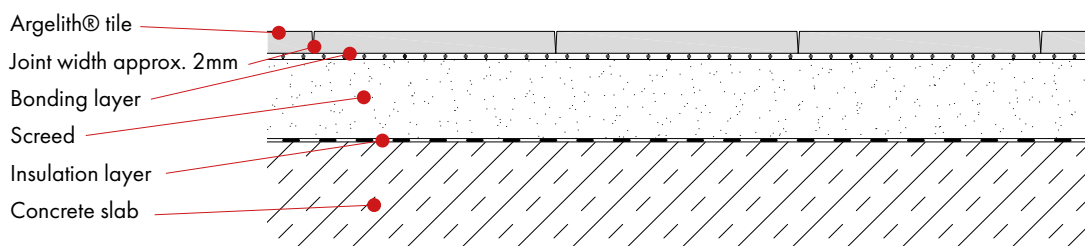
Farbe	Format	Thickness	Require- ment Pieces/ sqm (incl. Joint)	Content Pieces/ Box	Content sqm/ Pallet	Weight kg/sqm	Weight kg/Pallet
200 Light Gray	298 x 72 mm rounded	15 mm	3.33	28	504.50	1.90	960
220 Titan Gray	298 x 72 mm rounded	15 mm	3.33	28	504.50	1.90	960
230 Anthracite	298 x 72 mm rounded	15 mm	3.33	28	504.50	1.90	960
300 Beige	298 x 72 mm rounded	15 mm	3.33	21	378.38	2.63	1,000

12 mm thick tiles on request.
Other colors and surfaces on request.
Possible color deviations are due to printing technology.

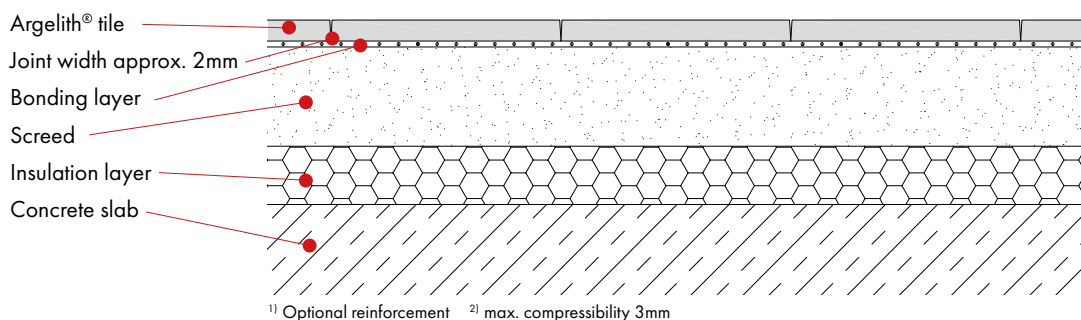
VIBRATION INSTALLATION (BONDED)



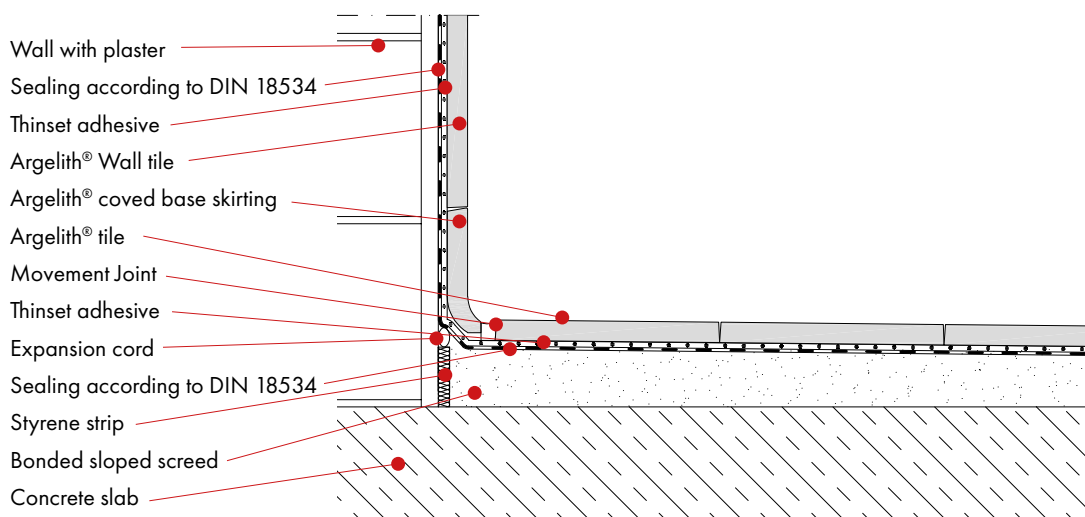
VIBRATION INSTALLATION (UNBONDED)



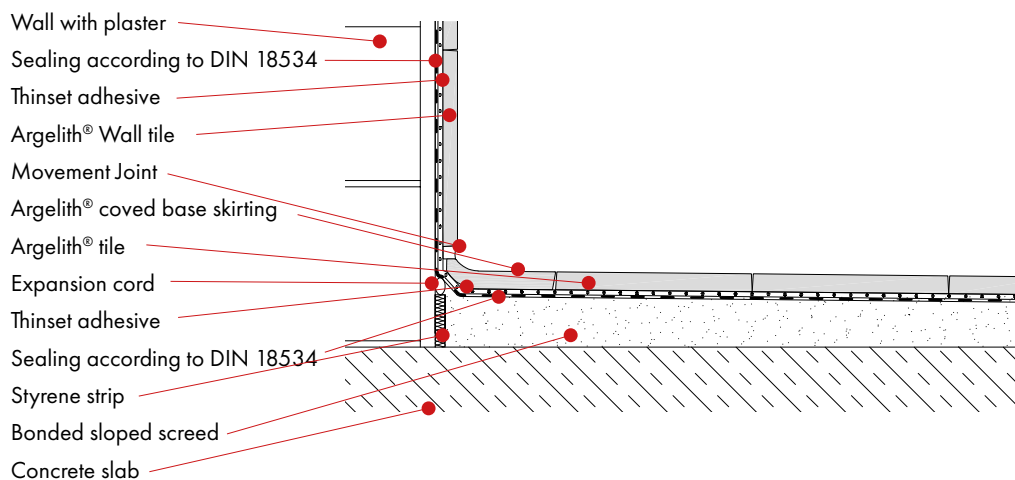
VIBRATION INSTALLATION (INSULATED)



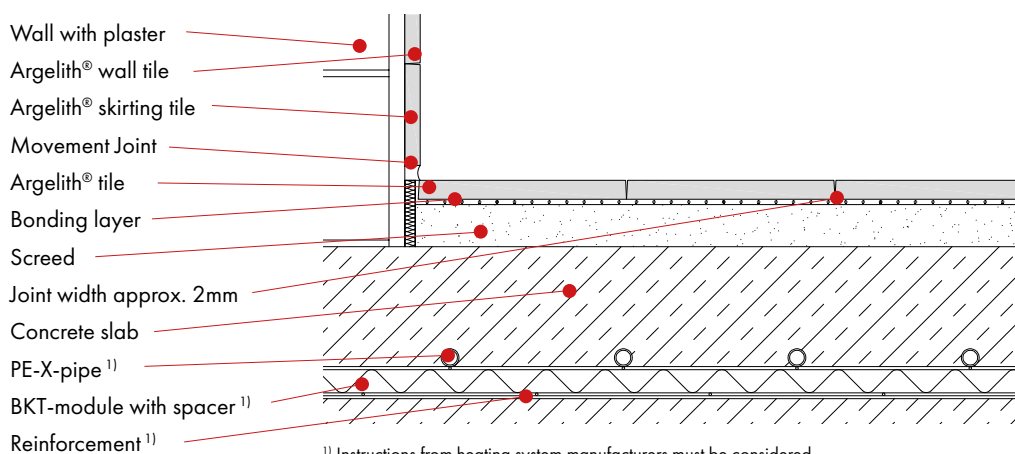
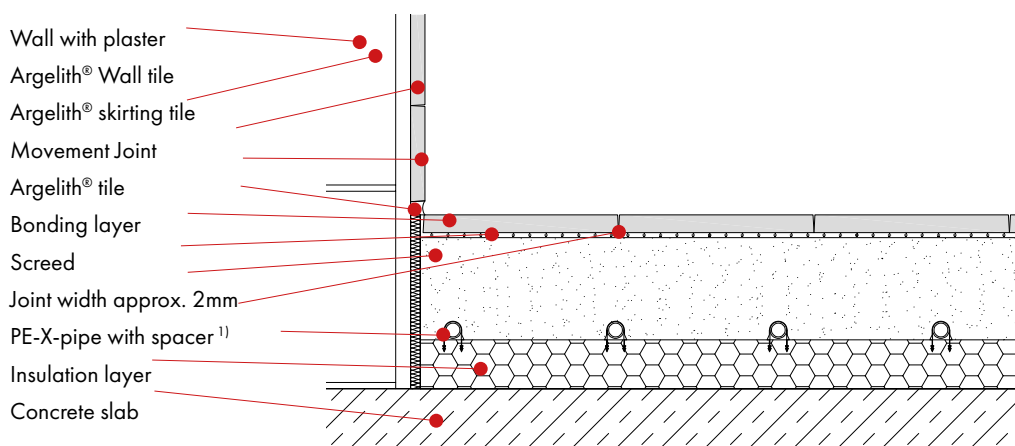
COVERED BASE SKIRTING (VERTICAL INSTALLATION)



COVERED BASE SKIRTING (HORIZONTAL INSTALLATION)



VIBRATION INSTALLTION (FLOOR HEATING SYSTEM)



¹⁾ Instructions from heating system manufacturers must be considered.

All floor systems should be reviewed by qualified engineers, architects, or construction professionals.



Tiles That Perform Under Pressure

A floor needs to do more than look good—it must handle the daily demands of your business. From chemical exposure and high temperatures to heavy mechanical loads, Argelith tiles are built to last. Available in hexagonal, square, or rectangular formats – and in thicknesses of 9, 15 or 18 mm – our fully vitrified tiles come in a wide range of slip-resistant surfaces, including smooth and knobbed profiles. Whether you're in manufacturing, retail, or food production, Argelith offers a tailored solution wherever flooring has to stand up to the toughest conditions.



Argelith Bodenkeramik H. Bitter GmbH
Schledehauser Str. 133 D-49152 Bad Essen
Tel. +49 (0) 5472 402 670 export@argelith.com



www.argelith.com