

Thermal Transfer Overprinter

E72/E73



Economic Intelligent Thermal Transfer Overprinter

High Quality and Cost-Effective

Makes Your Work More Efficient, Easily Replacing Ink Roller Printers

Easy to Use

- One-button start
- Automatic height and parallel adjustment

Stable And Reliable

- Controlled by four motors
- Precise ribbon control

Quick Editing

- Editing on mobile and computer
- Usb download
- Built-in print content.



Ribbon Efficiency

- Minimum ribbon spacing of 0.3mm
- Offset printing for radial savings

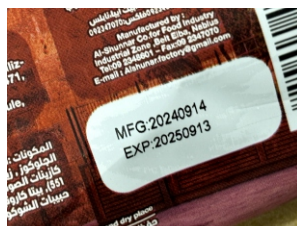
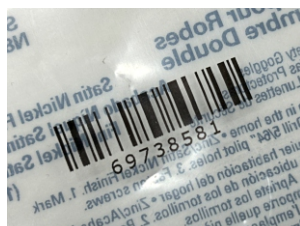
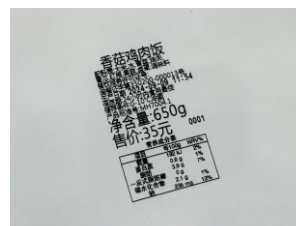
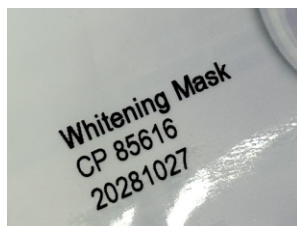
High Quality

- Rich printing content
- No need to make type particles.

Smart Manufacturing

- Remote computer networking
- Easily monitor production status

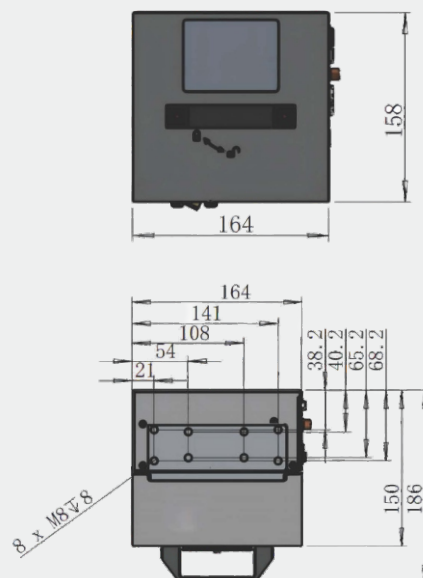
Sample Display



Technical Parameters

Item type	Model	E72(24mm)	E73(32mm)
Printing Modes		Intermittent & continuous modes in the same machine	
Directional Options		Left and right directions selectable	
Printing Resolution		200DPI	300DPI
Intermittent Mode Maximum Print Area		24mm X 55mm	32mm X 55mm
Continuous Mode Maximum Print Area		24mm X 120mm	32mm X 120mm
Intermittent Printing Speed		50~300mm/s	
Continuous Printing Speed		30~600mm/s	
Maximum Printing Frequency		220 times/minute	
Ribbon Length		400m	550m
Ribbon Width		25mm	33mm
Printing Content		Date, future date, time, counter, shift barcode, QR code, image, text	
Inputs		Print signal, encoder signal	
Outputs		Fault status output (relay signal output).	
Printer Dimensions (L x W x H in mm)		164x158x150	
Printer Weight		5kg	5.5kg
Power		110-220V AC, 50/60HZ, 120W	
Environmental		Temperature: 5-40°C. Humidity: 10% to 90%, non-condensing	

E72/E73 Dimensional Drawing



Available Android APP Operating Software

Continuous improvement of products is the unchanging policy of correct pack company.
We reserve the right to change designs and/or specifications without notice.
The materials and images in this product manual may differ slightly from the actual
Product due to configuration, product updates, etc. Please refer to the actual product.

Optional Accessories:

- 1.Ribbon
- 2.Controller
- 3.Continuous and intermittent stands

CORRECT PACK TECHNOLOGY CO.,LTD.

Add: Floor 3, Building 1, No. 728, Jinhu Road, Sanzao Town, Jinwan District,
Zhuhai City, Guangdong, China

Tel: +86 756 7255229 Fax: +86 756 7255635

E-mail: info@correct-pack.com Website:www.correct-pack.com