

Magnabosco

Quality Steam Boilers since 1960

GVR-Hybrid

NEW

NEW



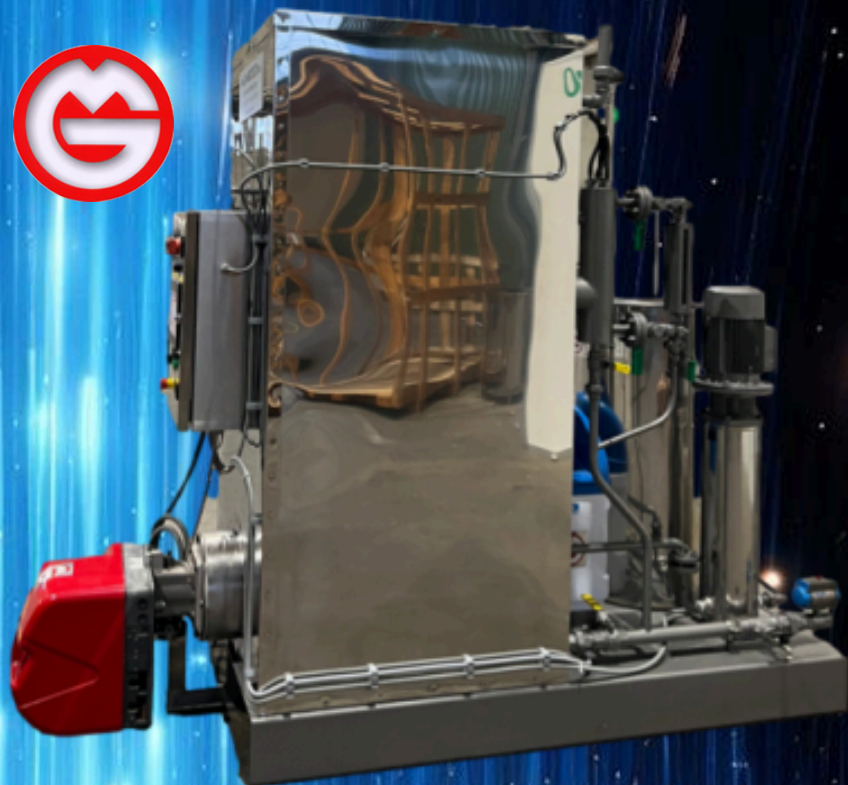
Hybrid steam boiler
Gas and Electric
Diesel and Electric



Azienda
certificata UNI
EN ISO 9001
WELD

GVR-Hybrid

PED
made with the
directive
2014/68/EU



GVR HYBRID	100	150	250	350	500	750	1000	1500	2000
produzione vapore/ steam production gas o diesel	kg 50	100	190	270	400	650	880	1250	1750
produzione vapore/ steam production electric	kg 50	50	60	80	100	100	120	250	250
Kg. Vapore Totale/ Total Steam	100	150	250	350	500	750	1000	1500	2000
Gas or Diesel Potenza/ Power kW	40	80	145	205	300	500	670	1000	1300
kW installati/ kW electric power	40	40	45	60	80	80	90	150	200
Tot potenza/ Power kW	80	120	190	265	380	580	760	1150	1500
BHP	8	12	19	27	38	58	76	115	150
HP	109	163	258	360	517	790	1033	1550	2050
kcal/h	66000	99000	165000	231000	330000	495000	660000	990000	1320000
1000BTU/h	273	410	680	950	1360	2050	2730	4100	5460
Pressione/Pressure from/to - bar	1*7-10-12-30	1*7-10-12-30	1*7-10-12-30	1*7-10-12-30	1*7-10-12-30	1*7-10-12-30	7*-10-12-30	10-12-30	10-12-30
From/to Mpa	0,1-0,7-1-1,2-3	0,1-0,7-1-1,2-3	0,1-0,7-1-1,2-3	0,1-0,7-1-1,2-3	0,1-0,7-1-1,2-3	0,7-1-1,2-3	0,7-1-1,2-3	1-1,2-3	1-1,2-3
From/to PSI	101-144-173-432	101-144-173-432	101-144-173-432	101-144-173-432	101-144-173-432	101-144-173-432	101-144-173-432	144-173-432	144-173-432
CONSUMO COMBUSTIBILE									
CONSUMO / CONSUMPTION									
Gas m3/h	3,5	7,5	14,5	20	32	48	66	92	115
Gasolio/gasoil Kg/h	3	6	9	16,9	28	43	58	87	174
Nafta/Fuel/Oil Kg/h	3,1	7	13,3	18	30	44	60	90	180
DIMENSIONI/DIMENSION mm									
DIMENSIONI/DIMENSION mm									
A/A1 mm	1300/100	1300/100	1450/200	1450/200	1650/400	1680/500	1800/500	2400/600	2800/800
B mm	800	800	800	800	900	900	900	1500	2000
H mm	1900	1900	1900	2200	2050	2480	2480	2480	2480
Peso/weight kg	650	700	750	800	1100	1400	1800	2500	3000
consumo/consumption kW/h	242	242	348	363	484	585	696	10160	10210
Presa Vapore/ Steam outlet DN	15	15	20	32	32	32	40	50	50
Diametro Max. Boccaglio mm	148	148	148	148	185	185	185	200	250
Diametro Max. Camino mm	130	130	140	200	200	200	200	300	350
Contro pressione/ Back pressure mm	20	20	20	30	30	35	35	40	45
H2O consigliata/ raccomandd									

durezza °F0,5 alcalinità 1200 P.P.M. Ca Co.

A Richiesta/On Requested:1-Economizzatore/Economizer 2- Compact Version Surriscaldatore/Overheater (*di serie/included) *SENZA PATENTATO

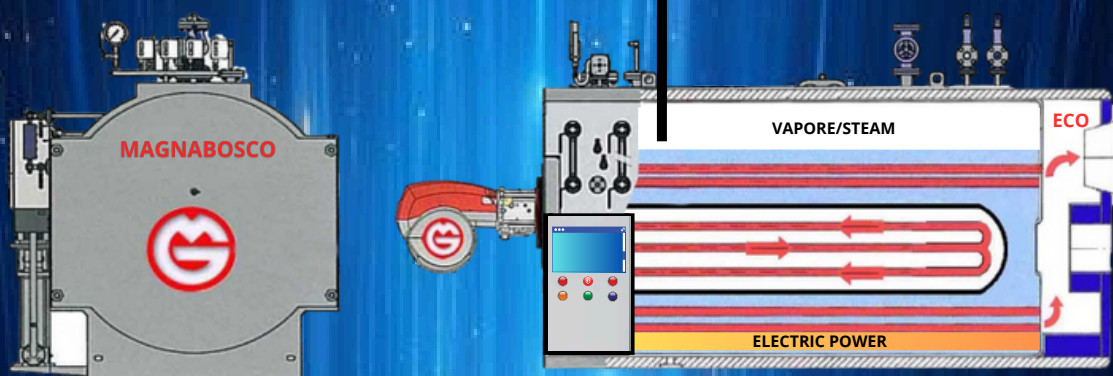
MAGNABOSCO STEAM BOILERS 36030 ZUGLIANO-VI-ITALY

TEL. 0445/330111 magnabosco@magnabosco.com

www.magnabosco.com

By BoscoBoilers2024

GOPI H

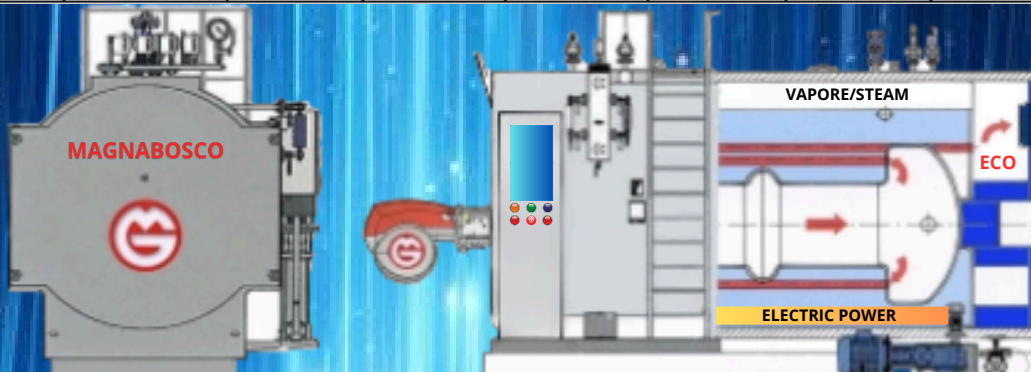


HYBRID TECNOLOGY GOPI H	1000	1500	2000	2500	3000	4000	5000	6000
Vapore\steam gas\diesel	kg/h 800	1200	1600	2000	2500	3400	4300	5300
vapore \steam elettrico\electric	kg/h 200	300	400	500	500	600	700	700
Kg. Vapore Totale/ Total Steam	1000	1500	2000	2500	3000	4000	5000	6000
Gas or Diesel Potenza/ Power kW	600	920	1210	1510	1910	2540	3260	3960
kW installati/ kW electric power	160	230	390	390	390	460	540	540
Tot potenza/ Power kW	760	1150	1600	1900	2300	3000	3800	4500
BHP	76	113	154	191	240	300	380	455
kcal/h x1000	480	7200	900	1200	1500	2400	3000	3600
Pressione/Pressure from/to - bar	bar 0,5 -1 -8 -10-12 -15-18-20-25-30				mpa. 0,05-0,1-0,8- 1-1,2-1,5-1,8-2-2,5-3			

CONSUMO/CONSAPTION MAX								
Gas m3/h	63	90	115	155	190	270	318	400
Gasolio/gasoiL/Nafta/Fuel/Oil Kg/h	53	80	96	130	165	225	260	330
Electric Energy kW	150	230	300	390	390	460	540	540

DIMENSIONI/DIMENSION mm								
A mm	1900	2000	2100	2200	2300	2400	2500	2700
B mm	3000	3400	3500	3700	4000	4500	5000	5500
H mm	1850	2100	2300	2500	2600	2800	2900	3100
Peso/weight kg (12bar-x15bar+15%CA)	2800	3700	4700	5700	6700	9000	11000	12000
Contro pressione/ Back pressure	mm 6	7	7	8	8	10	10	10

GOFB H



HYBRID TECNOLOGY GOFB H	2500	3500	5500	6500	8000	10000	15000	20000	30000
Vapore\steam gas\diesel	2000	3000	4900	5800	7200	9000	13800	18800	28500
vapore \steam elettrico\electric	500	500	600	700	800	1000	1200	1200	1500
Kg. Vapore Totale/ Total Steam	2500	3500	5000	6500	8000	10000	15000	20000	30000
Gas or Diesel Potenza/ Power kW	1510	2200	3700	4400	5300	7000	9000	14700	19000
kW installati/ kW electric power	390	390	460	540	620	760	900	1150	1150
Tot potenza/ Power kW	1900	2590	4160	4940	5920	7760	9900	15850	20150
BHP	191	270	420	500	615	770	1150	1600	2300
kcal/h x 1000	1500	2100	3300	3900	4800	6000	9000	13000	18000
Pressione/Pressure from/to - bar	bar 0,5 -1 -8 -10-12 -15-18-20-25-30				mpa. 0,05-0,1-0,8- 1-1,2-1,5-1,8-2-2,5-3				

CONSUMO/CONSAPTION MAX									
Gas m3/h	155	236	390	460	565	720	1500	1525	2190
Gasolio/gasoiL/Nafta/Fuel/Oil Kg/h	130	200	325	390	475	600	880	1300	1900
Electric Energy kW	390	390	460	540	620	760	900	900	1150

DIMENSIONI/DIMENSION mm									
A mm	4500	5100	5600	5800	6200	6900	8600	9500	10000
B mm	3000	3100	3300	3300	3500	3500	3800	4000	4000
H mm	2600	2600	3000	3000	3300	3500	3500	3900	4000
Peso/weight kg (12bar-x15bar+15%CA)	9000	10000	15000	16500	19000	27000	39000	57000	62000
Contro pressione/ Back pressure	8	8	12	14	14	18	21	30	35

A Richiesta/On Requested: Economizzatore/Economizer

INFORMAZIONI NON VINCOLANTI

Magnabosco

Steam Boilers since 1960

GOPI-Hybrid

NEUE
NEW
Nouveauté



Hybrid steam boiler
Gas and Electric
Fuels and Electric